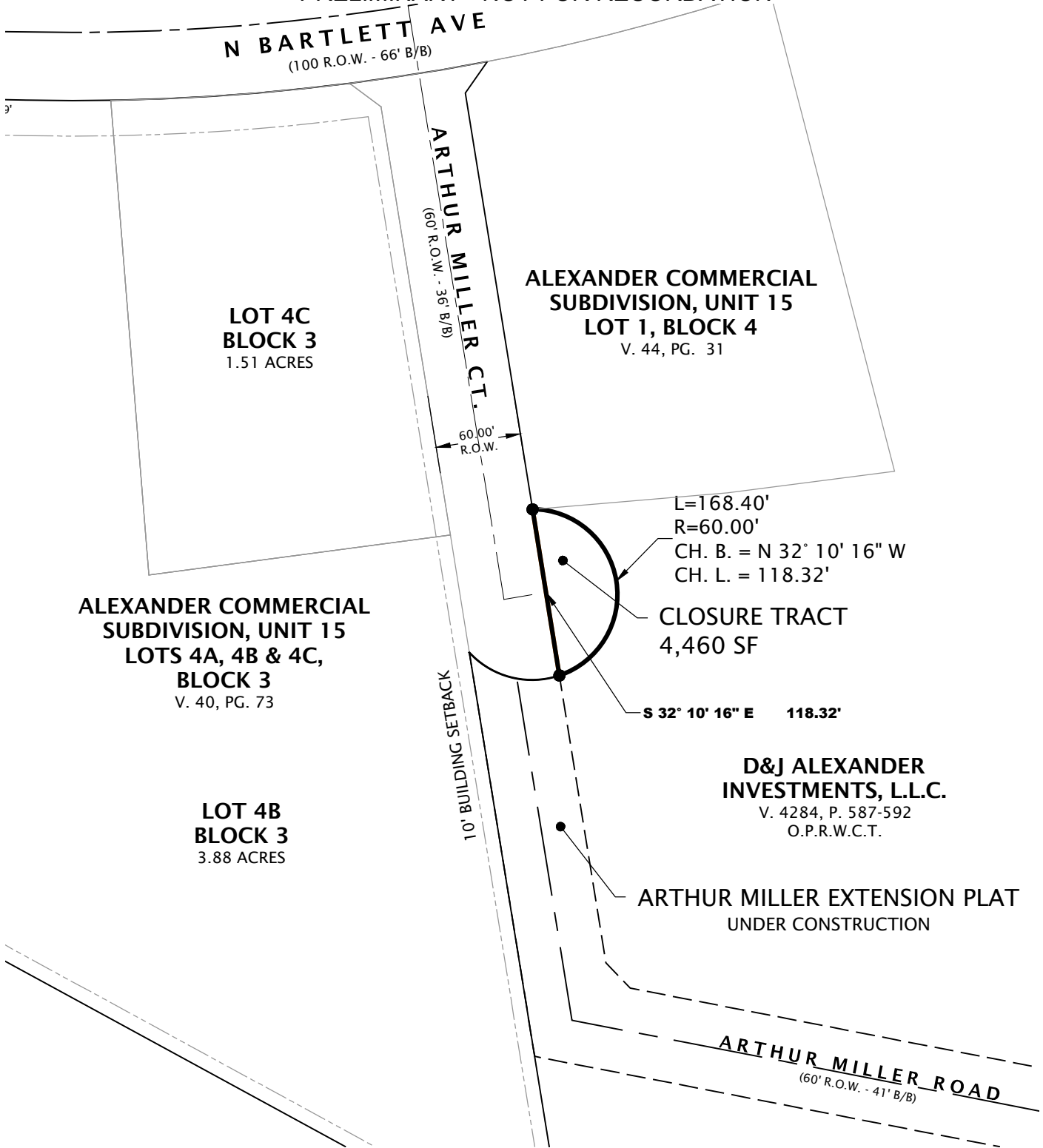


ROAD CLOSURE EXHIBIT  
PRELIMINARY - NOT FOR RECORDATION



ALEXANDER COMMERCIAL  
SUBDIVISION, UNIT 15  
LOTS 4A, 4B & 4C,  
BLOCK 3  
V. 40, PG. 73

LOT 4B  
BLOCK 3  
3.88 ACRES

LOT 4C  
BLOCK 3  
1.51 ACRES

ALEXANDER COMMERCIAL  
SUBDIVISION, UNIT 15  
LOT 1, BLOCK 4  
V. 44, PG. 31

L=168.40'  
R=60.00'  
CH. B. = N 32° 10' 16" W  
CH. L. = 118.32'

CLOSURE TRACT  
4,460 SF

S 32° 10' 16" E 118.32'

D&J ALEXANDER  
INVESTMENTS, L.L.C.  
V. 4284, P. 587-592  
O.P.R.W.C.T.

ARTHUR MILLER EXTENSION PLAT  
UNDER CONSTRUCTION

A 4,460 SQUARE FEET  
OUT OF THE ARTHUR MILLER ROW  
D & J ALEXANDER COMMERCIAL SUBDIVISION  
PHASE 15, VOL. 44, PG 73 P.R.W.C.T.  
SITUATED IN PORCTION 26, AGUSTIN SANCHEZ ORIGINAL GRANTEE,  
ABSTRACT 282, CITY OF LAREDO, WEBB COUNTY TEXAS

**TOPSITE**  
Civil Group

10901 INTERNATIONAL BLVD., SUITE 300  
LAREDO, TEXAS, 78045  
TEL. 956.725.5057  
WEB. WWW.TOPSITECIVIL.COM  
TBPELS ENGINEERING FIRM REG. F-22574  
TBPELS SURVEY REG. 10194686