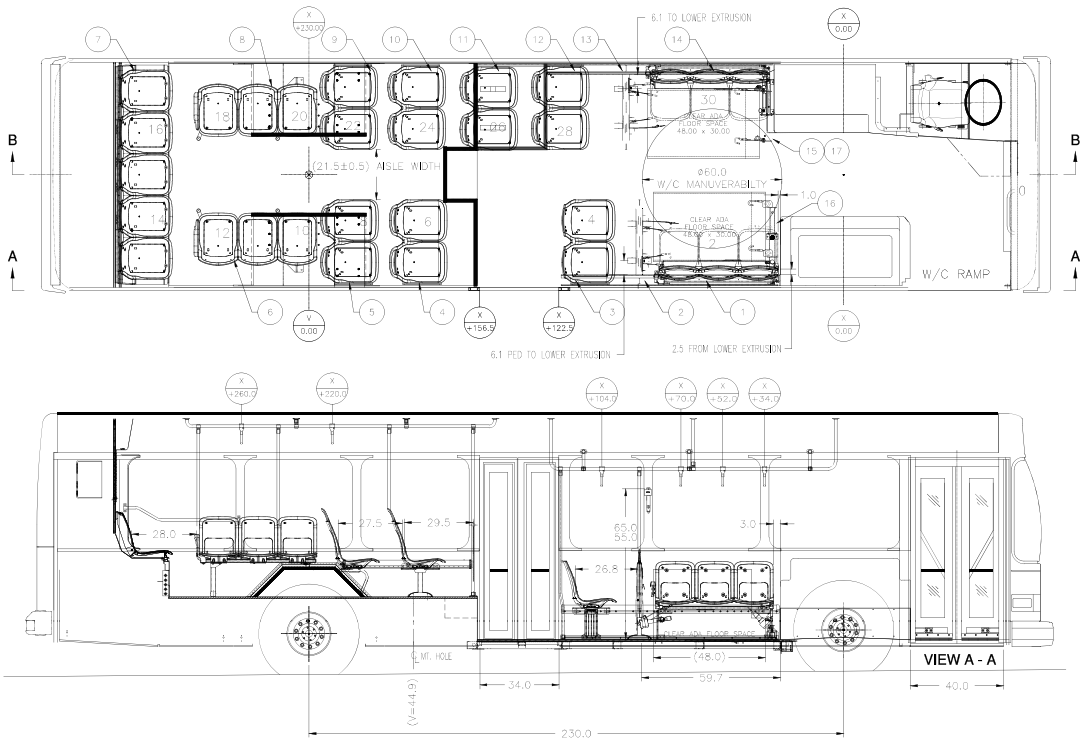
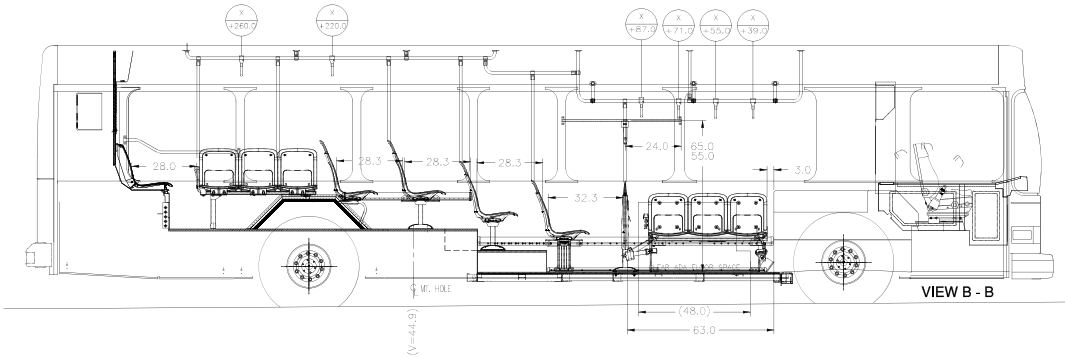


GILLIG PARTS	QTY	GILLIG PARTS	QTY
STANCHION, REAR LONGITUDINAL	4	BAR, WINDOW, 46.0	
STANCHION, TRVS. @ 3RD STEP	2	STANCHION/MODESTY, L6 SINGLE OFFSET FWD RD SHOWN	1
STANCHION, TRVS. @ 2ND STEP	1	PANEL, MODESTY, 3RD STEP, C. SIDE	1
STANCHION, TRVS. @ 1ST STEP TO 9.0 D/H DROP	1	STRAPS, O/H GRAB	12
STANCHION, W/C BARRIER	2		



- NOTES:
1. TO MAXIMIZE OCCUPANT CRASH PROTECTION AND REDUCE THE POTENTIAL FOR SIGNIFICANT INJURY TO PASSENGERS SEATED IN THE FIRST FORWARD FACING SEATS IMMEDIATELY REARWARD OF THE ADA AREA, GILLIG REQUIRES EITHER:
1.1 THE PLACEMENT OF A BARRIER FORWARD OF THESE SEATS.
1.2 USE OF A GRAB/STANCHION POLE FOR THE AISLE SEAT AND WALL MOUNTED GRAB HANDLE FOR THE OUTBOARD SEAT OR
1.3 SEAT BELTS ON BOTH THESE SEATS.
 2. ALL DIMENSIONS ARE IN INCHES.
 3. FLOORING LAYOUT: SEE FL-67525R026.
 4. THIS DRAWING IS TO BE USED FOR SEAT INSTALLATION. ALL OTHER GRAPHICS ARE SHOWN FOR REFERENCE ONLY. SEE BOM/ PAINT LAYOUT FOR EXTERIOR GRAPHICS AND GLAZING. FOR APPLICABLE TRANSMISSION HATCH AND STANCHIONS, RACKS AND HANDLES ON WHEEL WELL SEE BOM/MEETING NOTES.
- SEAT AND RESTRAINT NOTES:
10. SEATS & RESTRAINT BELTS MUST MEET FMVSS 209 & 302 STANDARDS.
 11. ALL SEATS WITH T-PEDESTALS SHALL HAVE AN OPEN CHANNEL DESIGN. ALL SEATS WITH DIMENSION E=6.12 SHALL HAVE 3.0 LONG MOUNTING SLOTS.
 12. REF: FOR SEAT SPECIFICATION OPTIONS AND OTHER SEAT DETAILS NOT SHOWN, SEE PURCHASING ORDER SPECIFICATION SHEET.

REVISIONS									
SV#	OWN	DATE	DESCRIPTION	REL.	DATE				
A	CHA		RELEASED FOR PRODUCTION	138203	05/18/19				

16									OPTION H, RH
15									OPTION H, LH, WHEELWELL MOUNTED
14									W/C FLIP-UP, AFT ARMREST, TOUCH PAD
13									W/C BARRIER, (2) PED, P1=10.00, P2=16.00, E=8.0, REMOTE BELT REL
12									W/C BARRIER, (2) PED, P1=10.00, P2=16.00, E=8.0, REMOTE BELT REL
11									(2) PED, P1=9.42, P2=16.55, E=6.12
10									(1) PED, P0 = 26.25, E=6.12
9									MOUNTED TO WHEEL WELL, MIN TRAVEL ±1.5
8									AFT ARMREST, E=6.12
7									REMOVABLE SETTEE, CENTER 3 SEATS REMOVABLE
6									AFT ARMREST, E=6.12
5									MOUNTED TO WHEEL WELL, MIN TRAVEL ±1.5
4									(1) PED, P0 = 26.25, E=6.12
3									W/C BARRIER, (2) PED, P1=10.00, P2=16.00, E=8.0, REMOTE BELT REL
2									W/C FLIP-UP, AFT ARMREST, TOUCH PAD
1									

ITEM NUMBER	VENDOR PART NUMBER	(A) PASSENGER SEAT SIZE	(B) SEAT SIZE	(C) GRAB HANDLE	(D) FLAT BACK PANEL	(E) STANCHION	(F) CUP	NOTES AND COMMENTS	
31	PASSENGERS							PASSENGER SEAT SUPPLIER: AMERICAN SEATING CO. PASSENGER SEAT MODELS: INSIGHT 18.0 WIDE FWD FACING INSIGHT 17.0 WIDE AISLE FACING	

FIRST CHASSIS		SEE PRODUCTION BOM	
---------------	--	--------------------	--

GILLIG DESIGN BULLETIN REQUIREMENTS: UNLESS OTHERWISE SPECIFIED		DESCRIPTION		DB NUMBER	REV
		SETTEE:		DB 157.000	D
		UPPER SECTION:		DB 157.001	C
		CENTER SECTION:		DB 158.007	B
		W/C RESTRAINT OPTION:		DB 152.014	AM
		ADA CLEAR FLOOR SPACE:		DB 152.000	A
		SEAT SPECIFICATIONS:		DB 155.001	D
		DIMENSIONS AND TOLERANCES ARE PER ANSI Y14.100-10, UNLESS OTHERWISE SPECIFIED:			
		HOLE/DRILL TOLERANCE:		LINEAR: .003	ANGULAR: .003
		NON-PADDED SEATS:		.005	
		PADDED SEATS:		.005	
		THIS DRAWING AND THE INFORMATION CONTAINED THEREON IS SUBMITTED CONFIDENTIALLY AND IS THE PROPERTY OF THE GILLIG LLC. USE, REPRODUCTION, OR DISCLOSURE OF THE CONTENT OF THIS DRAWING OR ANY PORTION THEREOF FOR ANY PURPOSE MUST BE APPROVED IN WRITING BY THE GILLIG LLC.			

SIGNATURE ON THIS DRAWING INDICATES CUSTOMER'S APPROVAL OF LAYOUT AND AGREEMENT THAT SAME IS IN COMPLIANCE WITH CUSTOMER'S SPECIFICATIONS. ONCE SIGNED THIS DRAWING BECOMES A PART OF CONTRACT # _____		PURCHASE ORDER # _____	
SIGNED BY: _____		ACTING ON BEHALF OF AND WITH THE AUTHORITY OF _____	
STANDARD REVISION		DATE	
N		10/27/15	
DESIGNED BY		DATE	
CHARLIE ABABSEH		05/18/19	
GILLIG		GILLIG LLC	
		LIVERMORE, CA	
		KIT & DIAGRAM, SEAT	
		LF2010 35' X 102"	
		LAREDO, TX	
		SL-66464-187136	