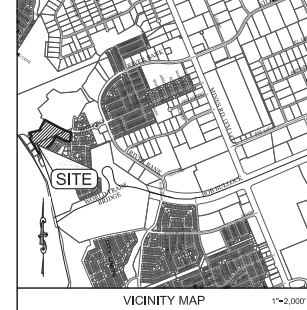
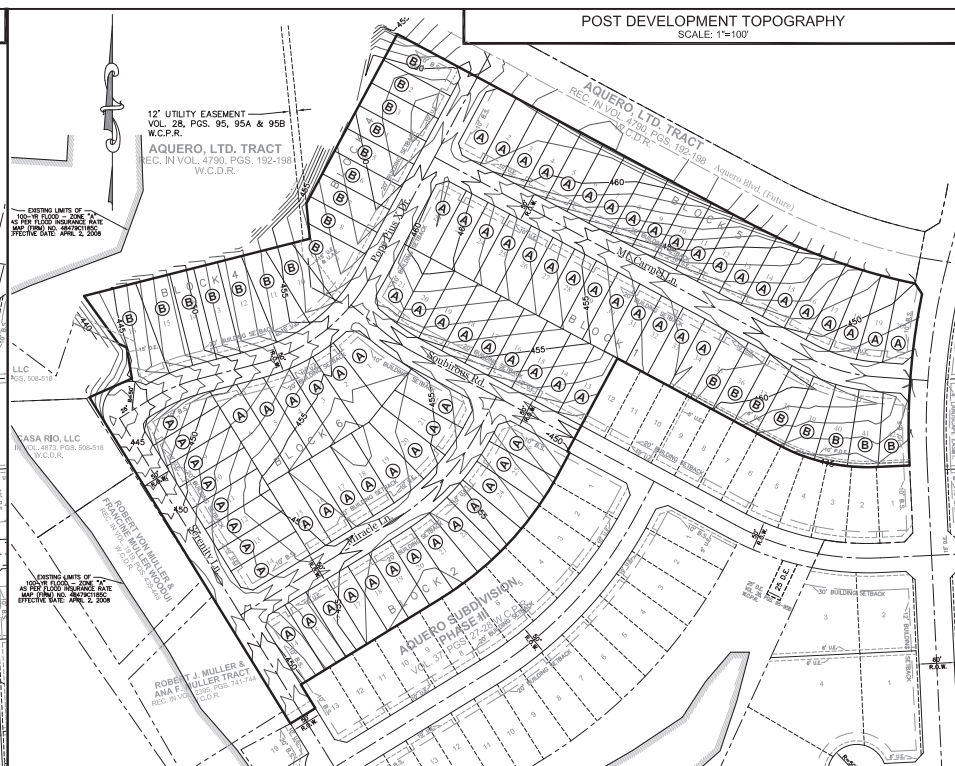


CURVE	DELTA ANGLE	RADIUS	CHORD	CHORD BEARING
C1	30°58'28"	219.84	172.98	N 77°15'24" W
C2	10°55'00"	104.92	289.88	N 107°11'41" E
C3	10°55'00"	104.92	289.88	N 107°11'41" E
C4	17°25'31"	300.00	91.19	N 67°04'24" E
C5	17°25'31"	300.00	91.19	N 67°04'24" E
C6	30°19'59"	300.00	189.98	N 37°28'24" E
C7	30°19'59"	300.00	189.98	N 37°28'24" E
C8	11°16'05"	300.00	58.00	N 67°04'24" E
C9	11°16'05"	300.00	58.00	N 67°04'24" E
C10	34°08'00"	300.00	128.19	N 64°04'15" E
C11	34°08'00"	300.00	128.19	N 64°04'15" E
C12	12°18'11"	50.00	108.73	N 67°04'24" E
C13	27°48'51"	50.00	24.27	N 37°28'24" E
C14	07°00'00"	325.00	44.44	N 27°48'51" E
C15	27°48'51"	50.00	24.27	N 37°28'24" E
C16	02°48'51"	325.00	44.44	N 27°48'51" E
C17	02°48'51"	325.00	44.44	N 27°48'51" E
C18	13°34'00"	275.00	65.12	N 37°28'24" E
C19	13°34'00"	275.00	65.12	N 37°28'24" E
C20	13°45'31"	275.00	66.04	N 37°28'24" E
C21	13°45'31"	275.00	66.04	N 37°28'24" E
C22	00°20'58"	325.00	1.95	N 75°30'58" E
C23	00°20'58"	325.00	1.95	N 75°30'58" E
C24	08°00'00"	325.00	45.38	N 27°48'51" E
C25	08°00'00"	325.00	45.38	N 27°48'51" E
C26	00°15'22"	325.00	28.81	N 49°21'28" E
C27	00°15'22"	325.00	28.81	N 49°21'28" E
C28	00°15'22"	325.00	28.81	N 49°21'28" E
C29	00°15'22"	325.00	28.81	N 49°21'28" E
C30	00°15'22"	325.00	28.81	N 49°21'28" E
C31	11°16'05"	325.00	63.62	N 67°04'24" E
C32	00°20'58"	325.00	4.79	N 75°30'58" E
C33	02°24'15"	325.00	15.73	N 75°30'58" E
C34	08°33'38"	325.00	44.32	N 67°04'24" E
C35	08°33'38"	325.00	44.32	N 67°04'24" E
C36	08°33'38"	325.00	44.32	N 67°04'24" E
C37	08°33'38"	325.00	44.32	N 67°04'24" E
C38	08°33'38"	325.00	44.32	N 67°04'24" E
C39	02°23'22"	325.00	17.73	N 75°30'58" E
C40	02°23'22"	325.00	17.73	N 75°30'58" E
C41	02°23'22"	325.00	17.73	N 75°30'58" E
C42	02°23'22"	325.00	17.73	N 75°30'58" E
C43	00°24'48"	325.00	5.16	N 75°30'58" E
C44	00°24'48"	325.00	5.16	N 75°30'58" E
C45	00°24'48"	325.00	5.16	N 75°30'58" E
C46	00°24'48"	325.00	5.16	N 75°30'58" E
C47	00°24'48"	325.00	5.16	N 75°30'58" E
C48	00°24'48"	325.00	5.16	N 75°30'58" E
C49	00°24'48"	325.00	5.16	N 75°30'58" E
C50	00°24'48"	325.00	5.16	N 75°30'58" E
C51	00°24'48"	325.00	5.16	N 75°30'58" E
C52	00°24'48"	325.00	5.16	N 75°30'58" E
C53	00°24'48"	325.00	5.16	N 75°30'58" E
C54	00°24'48"	325.00	5.16	N 75°30'58" E
C55	00°24'48"	325.00	5.16	N 75°30'58" E
C56	00°24'48"	325.00	5.16	N 75°30'58" E
C57	00°24'48"	325.00	5.16	N 75°30'58" E
C58	00°24'48"	325.00	5.16	N 75°30'58" E
C59	00°24'48"	325.00	5.16	N 75°30'58" E
C60	00°24'48"	325.00	5.16	N 75°30'58" E
C61	00°24'48"	325.00	5.16	N 75°30'58" E
C62	00°24'48"	325.00	5.16	N 75°30'58" E
C63	00°24'48"	325.00	5.16	N 75°30'58" E
C64	00°24'48"	325.00	5.16	N 75°30'58" E
C65	00°24'48"	325.00	5.16	N 75°30'58" E
C66	00°24'48"	325.00	5.16	N 75°30'58" E
C67	00°24'48"	325.00	5.16	N 75°30'58" E
C68	00°24'48"	325.00	5.16	N 75°30'58" E
C69	00°24'48"	325.00	5.16	N 75°30'58" E
C70	00°24'48"	325.00	5.16	N 75°30'58" E
C71	00°24'48"	325.00	5.16	N 75°30'58" E
C72	00°24'48"	325.00	5.16	N 75°30'58" E

LOT AREA (SF)	LOT AREA (SQ. FT.)
13	5,850.1
14	5,850.1
15	5,850.1
16	5,850.1
17	5,850.1
18	5,850.1
19	5,850.1
20	5,850.1
21	5,850.1
22	5,850.1
23	5,850.1
24	5,850.1
25	5,850.1
26	5,850.1
27	5,850.1
28	5,850.1
29	5,850.1
30	5,850.1
31	5,850.1
32	5,850.1
33	5,850.1
34	5,850.1
35	5,850.1
36	5,850.1
37	5,850.1
38	5,850.1
39	5,850.1
40	5,850.1
41	5,850.1
42	5,850.1
43	5,850.1
44	5,850.1
45	5,850.1
46	5,850.1
47	5,850.1
48	5,850.1
49	5,850.1
50	5,850.1
51	5,850.1
52	5,850.1
53	5,850.1
54	5,850.1
55	5,850.1
56	5,850.1
57	5,850.1
58	5,850.1
59	5,850.1
60	5,850.1
61	5,850.1
62	5,850.1
63	5,850.1
64	5,850.1
65	5,850.1
66	5,850.1
67	5,850.1
68	5,850.1
69	5,850.1
70	5,850.1
71	5,850.1
72	5,850.1
73	5,850.1
74	5,850.1
75	5,850.1
76	5,850.1
77	5,850.1
78	5,850.1
79	5,850.1
80	5,850.1
81	5,850.1
82	5,850.1
83	5,850.1
84	5,850.1
85	5,850.1
86	5,850.1
87	5,850.1
88	5,850.1
89	5,850.1
90	5,850.1
91	5,850.1
92	5,850.1
93	5,850.1
94	5,850.1
95	5,850.1
96	5,850.1
97	5,850.1
98	5,850.1
99	5,850.1
100	5,850.1
101	5,850.1
102	5,850.1
103	5,850.1
104	5,850.1
105	5,850.1
106	5,850.1
107	5,850.1
108	5,850.1
109	5,850.1
110	5,850.1
111	5,850.1
112	5,850.1
113	5,850.1
114	5,850.1
115	5,850.1
116	5,850.1
117	5,850.1
118	5,850.1
119	5,850.1
120	5,850.1
121	5,850.1
122	5,850.1
123	5,850.1
124	5,850.1
125	5,850.1
126	5,850.1
127	5,850.1
128	5,850.1
129	5,850.1
130	5,850.1
131	5,850.1
132	5,850.1
133	5,850.1
134	5,850.1
135	5,850.1
136	5,850.1
137	5,850.1
138	5,850.1
139	5,850.1
140	5,850.1
141	5,850.1
142	5,850.1
143	5,850.1
144	5,850.1
145	5,850.1
146	5,850.1
147	5,850.1
148	5,850.1
149	5,850.1
150	5,850.1
151	5,850.1
152	5,850.1
153	5,850.1
154	5,850.1
155	5,850.1
156	5,850.1
157	5,850.1
158	5,850.1
159	5,850.1
160	5,850.1
161	5,850.1
162	5,850.1
163	5,850.1
164	5,850.1
165	5,850.1
166	5,850.1
167	5,850.1
168	5,850.1
169	5,850.1
170	5,850.1
171	5,850.1
172	5,850.1
173	5,850.1
174	5,850.1
175	5,850.1
176	5,850.1
177	5,850.1
178	5,850.1
179	5,850.1
180	5,850.1
181	5,850.1
182	5,850.1
183	5,850.1
184	5,850.1
185	5,850.1
186	5,850.1
187	5,850.1
188	5,850.1
189	5,850.1
190	5,850.1
191	5,850.1
192	5,850.1
193	5,850.1
194	5,850.1
195	5,850.1
196	5,850.1
197	5,850.1
198	5,850.1
199	5,850.1
200	5,850.1
201	5,850.1
202	5,850.1
203	5,850.1
204	5,850.1
205	5,850.1
206	5,850.1
207	5,850.1
208	5,850.1
209	5,850.1
210	5,850.1
211	5,850.1
212	5,850.1
213	5,850.1
214	5,850.1
215	5,850.1
216	5,850.1
217	5,850.1
218	5,850.1
219	5,850.1
220	5,850.1
221	5,850.1
222	5,850.1
223	5,850.1
224	5,850.1
225	5,850.1
226	5,850.1
227	5,850.1
228	5,850.1
229	5,850.1
230	5,850.1
231	5,850.1
232	5,850.1
233	5,850.1
234	5,850.1
235	5,850.1
236	5,850.1
237	5,850.1
238	5,850.1
239	5,850.1
240	5,850.1
241	5,850.1
242	5,850.1
243	5,850.1
244	5,850.1
245	5,850.1
246	5,850.1
247	5,850.1
248	5,850.1
249	5,850.1
250	5,850.1
251	5,850.1
252	5,850.1
253	5,850.1
254	5,850.1
255	5,850.1
256	5,850.1
257	5,850.1
258	5,850.1
259	5,850.1
260	5,850.1
261	5,850.1
262	5,850.1
263	5,850.1
264	5,850.1
265	5,850.1
266	5,850.1
267	5,850.1
268	5,850.1
269	5,850.1
270	5,850.1
271	5,850.1
272	5,850.1
273	5,850.1
274	5,850.1
275	5,850.1
276	5,850.1
277	5,850.1
278	5,850.1
279	5,850.1
280	5,850.1
281	5,850.1
282	5,850.1
283	5,850.1
284	5,850.1
285	5,850.1
286	5,850.1
287	5,850.1
288	5,850.1
289	5,850.1
290	5,850.1
291	5,850.1
292	5,850.1
293	5,850.1
294	5,850.1
295	5,850.1
296	5,850.1
297	5,850.1
298	5,850.1
299	5,850.1
300	5,850.1



- NOTES:**
- 1.- MAINTENANCE OF THE LANDSCAPING SHALL COMPLY WITH THE PROVISIONS OF APPENDIX 2 OF SECTION 24-83 OF THE LAREDO LAND DEVELOPMENT CODE.
 - 2.- THE SETBACKS SHALL BE DETERMINED BASED ON THE CURRENT ZONING IN ACCORDANCE TO SECTION 24-71.1 OF THE LAREDO LAND DEVELOPMENT CODE, UNLESS INDICATED BY THE DEVELOPER AT THE TIME OF PLATTING.
 - 3.- DRIVEWAYS, SIDEWALKS AND TREES WILL BE INSTALLED AT THE TIME OF EASEMENT OF BUILDING PERMITS IN ACCORDANCE WITH THE LAREDO LAND DEVELOPMENT CODE.
 - 4.- ALL MAJOR AND MINOR STREETS SHALL BE LOCATED ON THE PLAT.
 - 5.- ALL MAJOR AND MINOR STREETS SHALL BE LOCATED ON THE PLAT.
 - 6.- ALL MAJOR AND MINOR STREETS SHALL BE LOCATED ON THE PLAT.
 - 7.- ALL MAJOR AND MINOR STREETS SHALL BE LOCATED ON THE PLAT.
 - 8.- ALL MAJOR AND MINOR STREETS SHALL BE LOCATED ON THE PLAT.
 - 9.- ALL MAJOR AND MINOR STREETS SHALL BE LOCATED ON THE PLAT.
 - 10.- ALL MAJOR AND MINOR STREETS SHALL BE LOCATED ON THE PLAT.
 - 11.- ALL MAJOR AND MINOR STREETS SHALL BE LOCATED ON THE PLAT.
 - 12.- ALL MAJOR AND MINOR STREETS SHALL BE LOCATED ON THE PLAT.
 - 13.- ALL MAJOR AND MINOR STREETS SHALL BE LOCATED ON THE PLAT.
 - 14.- ALL MAJOR AND MINOR STREETS SHALL BE LOCATED ON THE PLAT.
 - 15.- ALL MAJOR AND MINOR STREETS SHALL BE LOCATED ON THE PLAT.
 - 16.- ALL MAJOR AND MINOR STREETS SHALL BE LOCATED ON THE PLAT.
 - 17.- ALL MAJOR AND MINOR STREETS SHALL BE LOCATED ON THE PLAT.
 - 18.- ALL MAJOR AND MINOR STREETS SHALL BE LOCATED ON THE PLAT.
 - 19.- ALL MAJOR AND MINOR STREETS SHALL BE LOCATED ON THE PLAT.
 - 20.- ALL MAJOR AND MINOR STREETS SHALL BE LOCATED ON THE PLAT.
 - 21.- ALL MAJOR AND MINOR STREETS SHALL BE LOCATED ON THE PLAT.
 - 22.- ALL MAJOR AND MINOR STREETS SHALL BE LOCATED ON THE PLAT.
 - 23.- ALL MAJOR AND MINOR STREETS SHALL BE LOCATED ON THE PLAT.
 - 24.- ALL MAJOR AND MINOR STREETS SHALL BE LOCATED ON THE PLAT.
 - 25.- ALL MAJOR AND MINOR STREETS SHALL BE LOCATED ON THE PLAT.
 - 26.- ALL MAJOR AND MINOR STREETS SHALL BE LOCATED ON THE PLAT.
 - 27.- ALL MAJOR AND MINOR STREETS SHALL BE LOCATED ON THE PLAT.
 - 28.- ALL MAJOR AND MINOR STREETS SHALL BE LOCATED ON THE PLAT.
 - 29.- ALL MAJOR AND MINOR STREETS SHALL BE LOCATED ON THE PLAT.
 - 30.- ALL MAJOR AND MINOR STREETS SHALL BE LOCATED ON THE PLAT.
 - 31.- ALL MAJOR AND MINOR STREETS SHALL BE LOCATED ON THE PLAT.
 - 32.- ALL MAJOR AND MINOR STREETS SHALL BE LOCATED ON THE PLAT.
 - 33.- ALL MAJOR AND MINOR STREETS SHALL BE LOCATED ON THE PLAT.
 - 34.- ALL MAJOR AND MINOR STREETS SHALL BE LOCATED ON THE



DATE _____

 **PORRAS NANCE**
ENGINEERING

[illegible]

The figure contains three technical drawings of concrete block walls:

- TYPICAL TYPE "A"**: Shows a cross-section of a wall with two 6-inch thick concrete blocks separated by a 4-inch gap. The top surface is labeled "CONCRETE BLOCK SURFACE". Dimensions include 1/2 inch for the gap, 4 inches for the block width, and 8 inches for the total height.
- TYPICAL TYPE "B"**: Shows a cross-section of a wall with two 6-inch thick concrete blocks separated by a 4-inch gap. The top surface is labeled "CONCRETE BLOCK SURFACE". Dimensions include 1/2 inch for the gap, 4 inches for the block width, and 8 inches for the total height.
- TYPICAL TYPE "C"**: Shows a cross-section of a wall with two 6-inch thick concrete blocks separated by a 4-inch gap. The top surface is labeled "CONCRETE BLOCK SURFACE". Dimensions include 1/2 inch for the gap, 4 inches for the block width, and 8 inches for the total height.

		HORIZONTAL SCALE : ——— HORIZONTAL SCALE: 1"=100' DRAWN : ——— CHECKED : W.N. APPROVED : W.N. FIELD BOOK : ———		LEGEND: R.C.W. RIGHT OF WAY P.C.B. PLAT OF BEGINNING W.C.P.R. WEBB COUNTY PLAT RECORDS W.C.D.R. WEBB COUNTY DEED RECORDS B.S. BUILDING SETBACK U.E. UTILITY EASEMENT P.E. PRIVATE DRAINAGE EASEMENT U.A.E. UTILITY ACCESS EASEMENT D.E. DRAINAGE EASEMENT	
DATE : 03/15/2024 REVISIONS :					

 **PORRAS NANCE**
ENGINEERING

304 E. CALTON
LAREDO, TEXAS 78041
TBPE F-6205
TBPLS F-101888
OFFICE (956) 724-3097
www.porrasnance.com

OWNER: AQUERO, LTD. 11204 McPHERSON RD. SUITE #110 LAREDO, TEXAS 78045 (956) 568-8847 PH	ENGINEER/SURVEYOR: PORRAS NANCE ENGINEERING 304 E. CALTON RD. P.O. BOX 1670 LAREDO, TEXAS 78044 (956) 724-3097 PH (956) 724-9208 FX	PROJECT DATA: ACRES : 17,822 ACRES LOTS : 101 RESIDENTIAL LOTS R.O.W. : 50' B/B : 31'	PLAT OF: AQUERO SUBDIVISION, PHASE V BEING OUT OF AQUERO LTD. TRACT AS RECORDED IN VOLUME 100, PAGES 192-198, W.C.D.R. SUSSEY 2143 ~ ABSTRACT 5941, ADEL MORGAN, ORIGINAL GRANTEE AND PORCION IV ~ ABSTRACT 47, JOAQUIN GARCIA, ORIGINAL GRANTEE CITY OF LAREDO, WEBB COUNTY, TEXAS.	SHEET: 2 OF 2
---	---	---	--	-------------------------