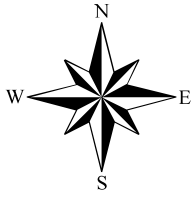


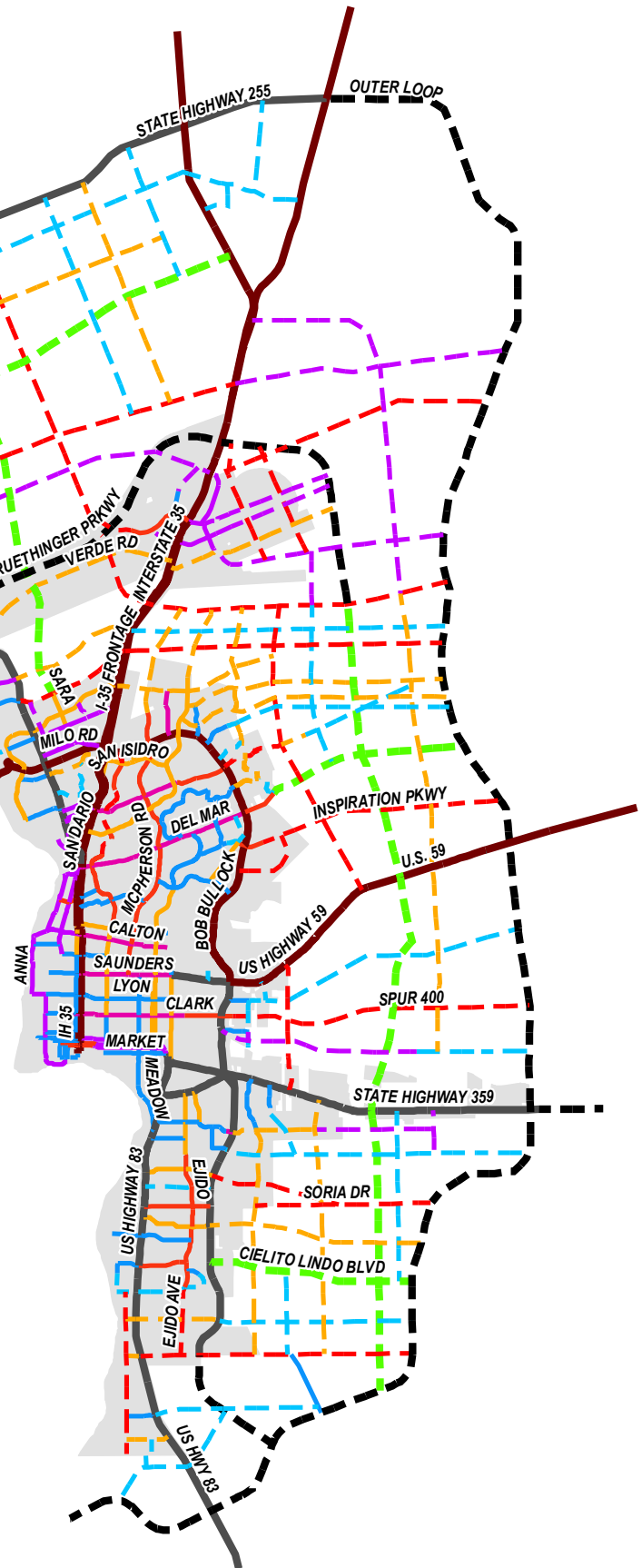
FUTURE THOROUGHFARE PLAN - PROPOSED CHANGES



Future Thoroughfare Plan Class

- Expressway ROW Variable Width
- - - Expressway - Proposed ROW Variable Width
- Freeway ROW Variable Width
- - - Multiway Boulevard - Proposed ROW > 140'
- Principal Arterial ROW 100' - 120'
- - - Principal Arterial - Proposed ROW 100' - 120'
- Modified Principal Arterial ROW 100' - 120'
- Minor Arterial ROW 90'
- - - Minor Arterial - Proposed ROW 90'
- Collector ROW 80'
- - - Collector - Proposed ROW 80'
- Industrial Collector ROW 70'
- - - Industrial Collector - Proposed ROW 70'
- City Limits

0 3 6 12 Miles



Date: 7/29/2025



City of Laredo Planning Department
1413 Houston Street
Laredo, Texas 78040

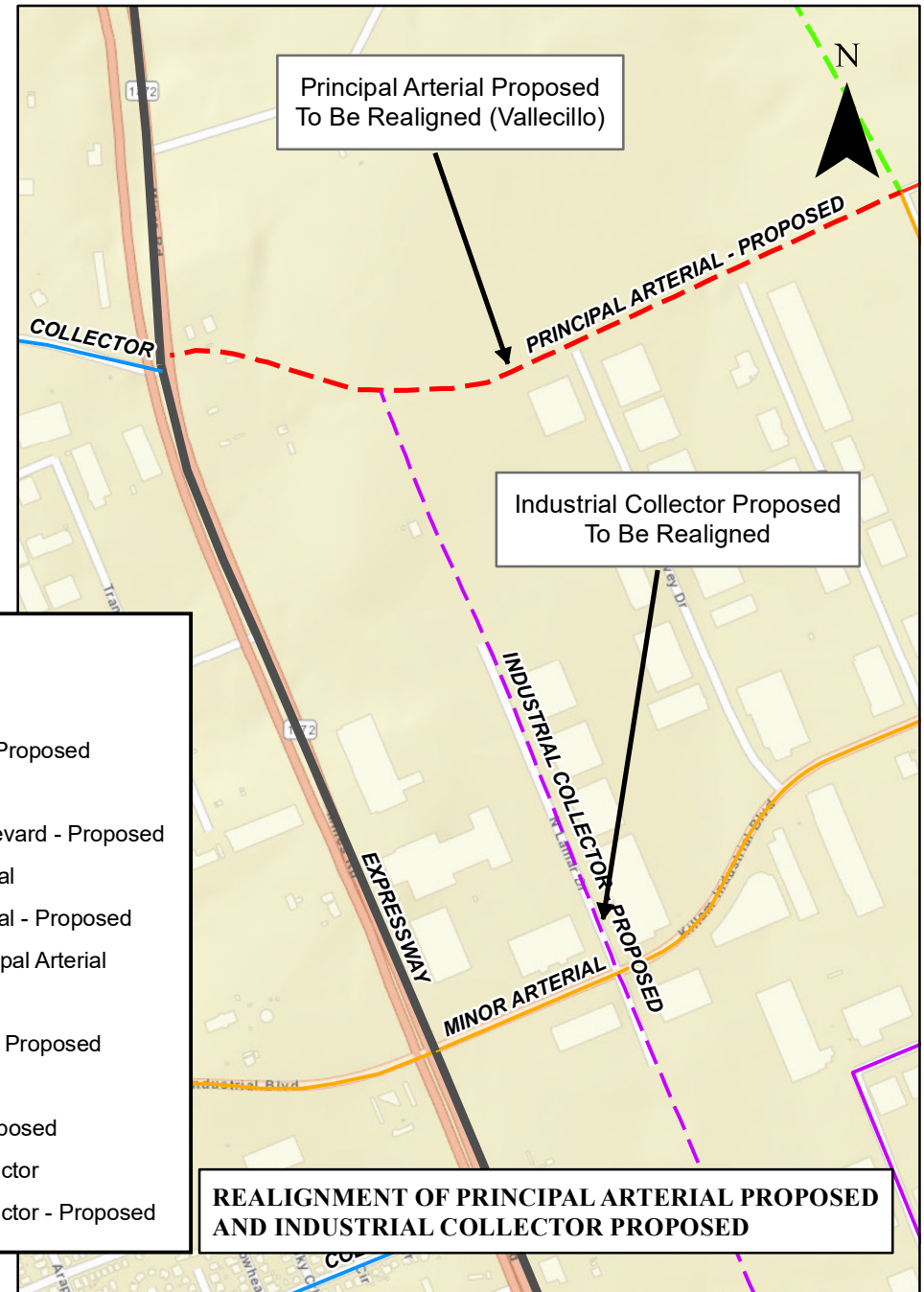
DISCLAIMER

The information provided in this map submitted to, gathered by and/or developed by the City of Laredo from various sources. Geographic information has a high probability of becoming outdated from the time it is collected and therefore, at-present ground conditions should be assessed to determine the accuracy of provided information. The city of Laredo assumes no liability for any decisions made or actions taken or no taken by the user of this data in reliance upon any data furnished herewith. The use of this data indicates your unconditional acceptance of all risks associated with the use of this data.

EXISTING THOROUGHFARE PLAN



PROPOSED THOROUGHFARE PLAN



Legend

- Expressway
- - - Expressway - Proposed
- Freeway
- - - Multiway Boulevard - Proposed
- Principal Arterial
- - - Principal Arterial - Proposed
- - - Modified Principal Arterial
- Minor Arterial
- - - Minor Arterial - Proposed
- Collector
- - - Collector - Proposed
- Industrial Collector
- - - Industrial Collector - Proposed

**REALIGNMENT OF PRINCIPAL ARTERIAL PROPOSED
AND INDUSTRIAL COLLECTOR PROPOSED**



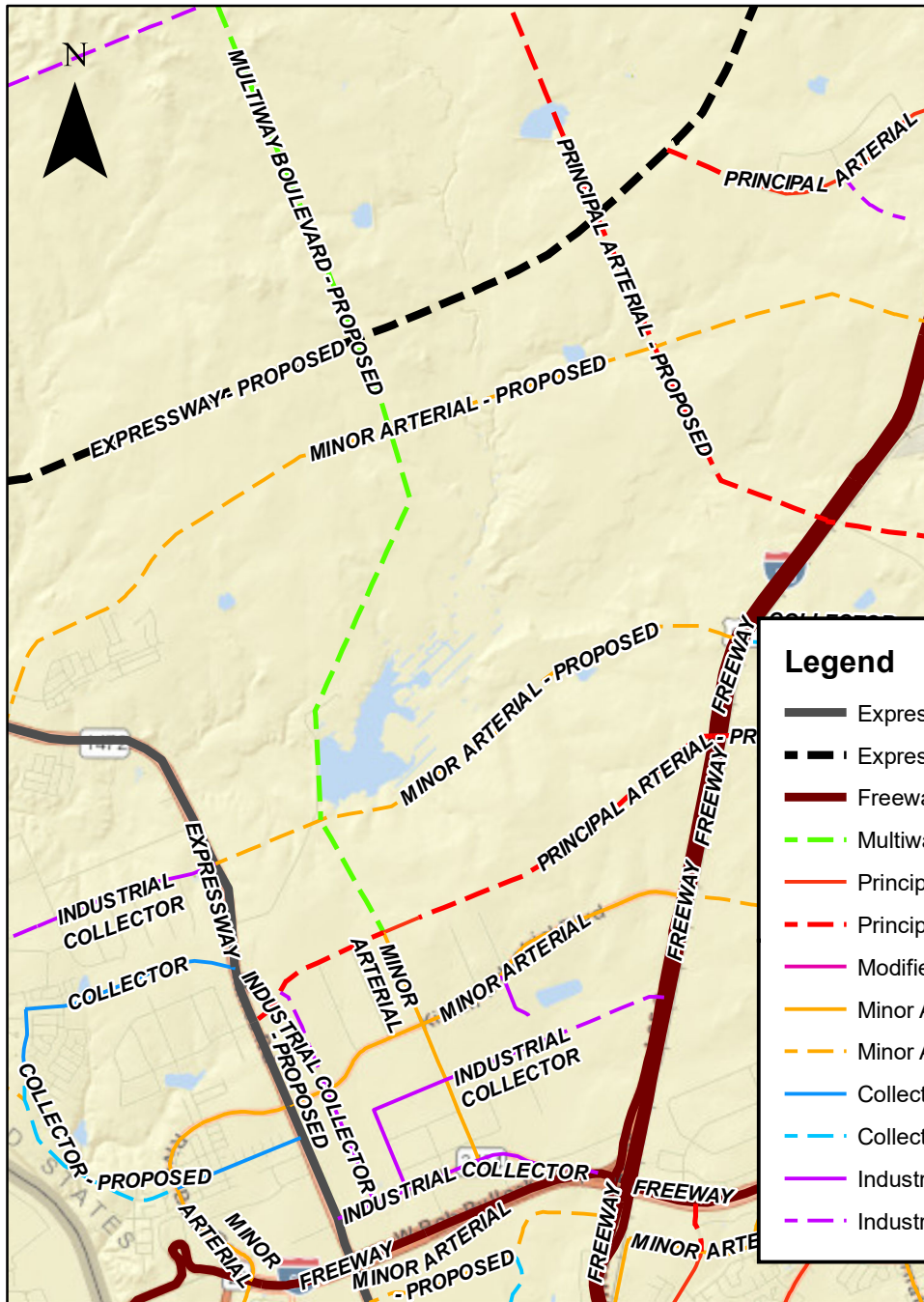
City of Laredo Planning Department
1413 Houston Street
Laredo, Texas 78040

DISCLAIMER

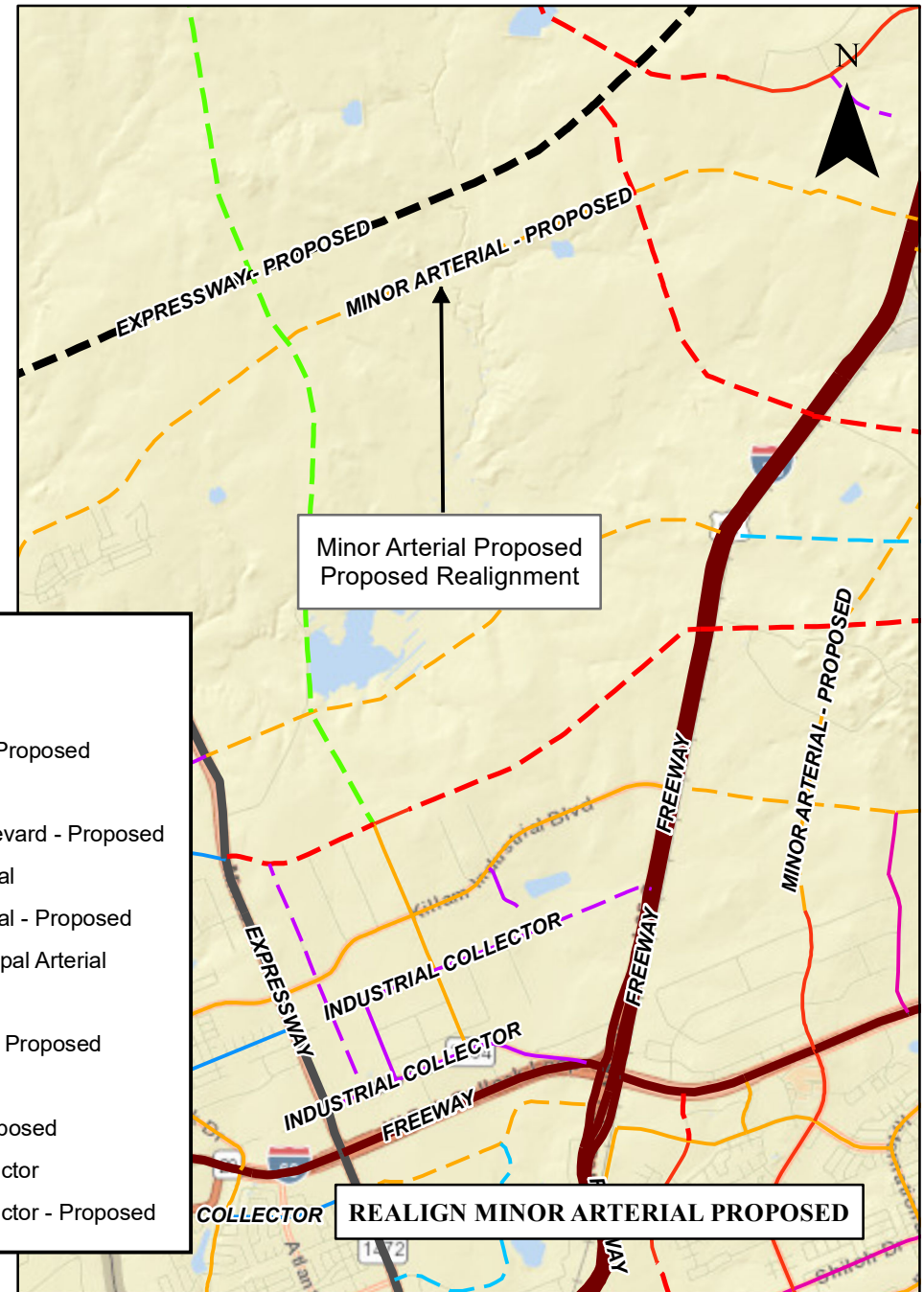
The information provided in this map submitted to, gathered by and/or developed by the City of Laredo from various sources. Geographic Information has a high probability of becoming outdated from the time it is collected and therefore, at-present ground conditions should be assessed to determine the accuracy of provided information. The city of Laredo assumes no liability for any decisions made or actions taken or no taken by the user of this data in reliance upon any data furnished herewith. The use of this data indicates your unconditional acceptance of all risks associated with the use of this data.

1 inch = 1,000 feet

EXISTING THOROUGHFARE PLAN



PROPOSED THOROUGHFARE PLAN



Legend

- Expressway
- - - Expressway - Proposed
- Freeway
- - - Multiway Boulevard - Proposed
- Principal Arterial
- - - Principal Arterial - Proposed
- Modified Principal Arterial
- Minor Arterial
- - - Minor Arterial - Proposed
- Collector
- - - Collector - Proposed
- Industrial Collector
- - - Industrial Collector - Proposed



City of Laredo Planning Department
1413 Houston Street
Laredo, Texas 78040

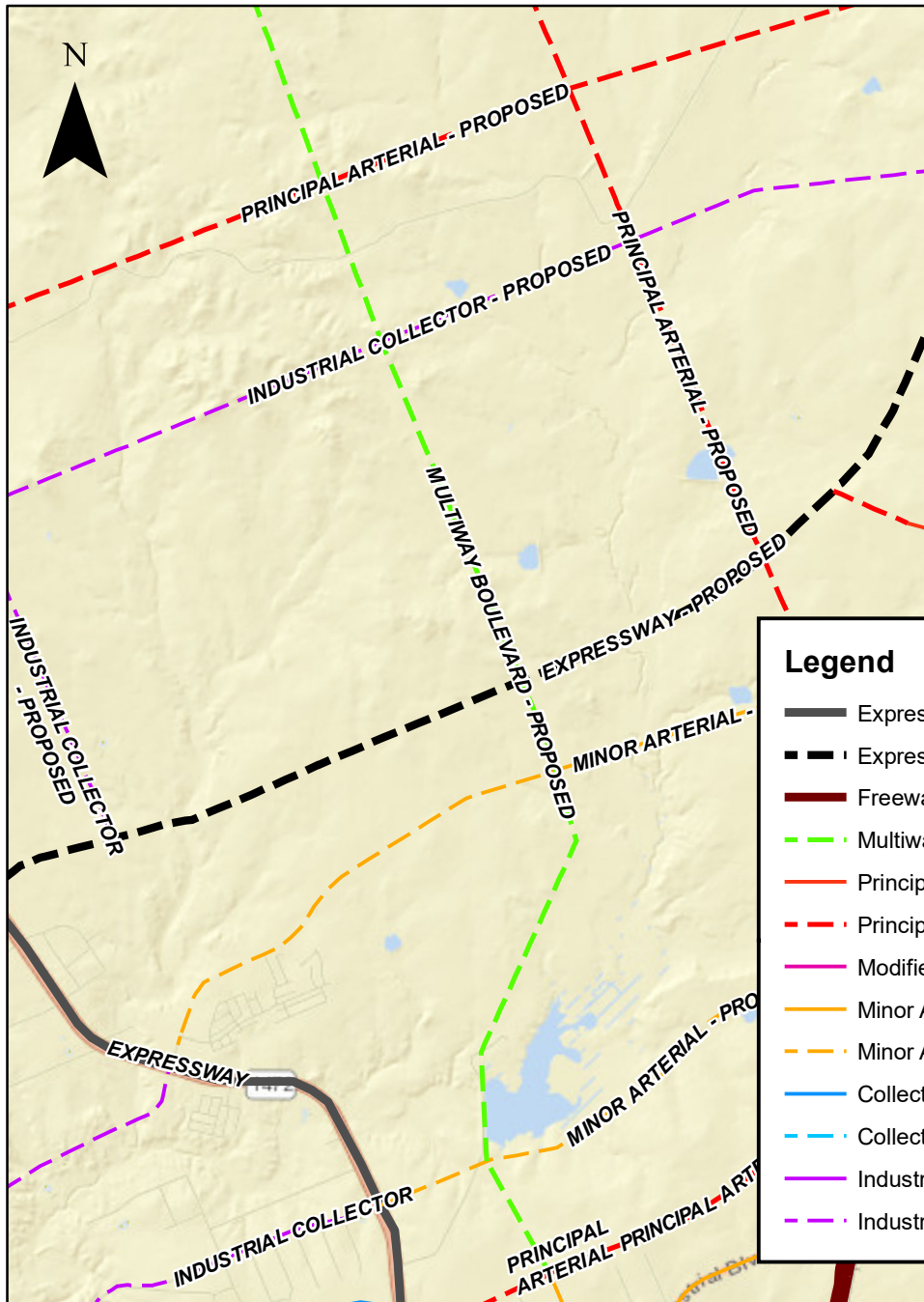
DISCLAIMER

The information provided in this map submitted to, gathered by and/or developed by the City of Laredo from various sources. Geographic Information has a high probability of becoming outdated from the time it is collected and therefore, at-present ground conditions should be assessed to determine the accuracy of provided information. The city of Laredo assumes no liability for any decisions made or actions taken or no taken by the user of this data in reliance upon any data furnished herewith. The use of this data indicates your unconditional acceptance of all risks associated with the use of this data.

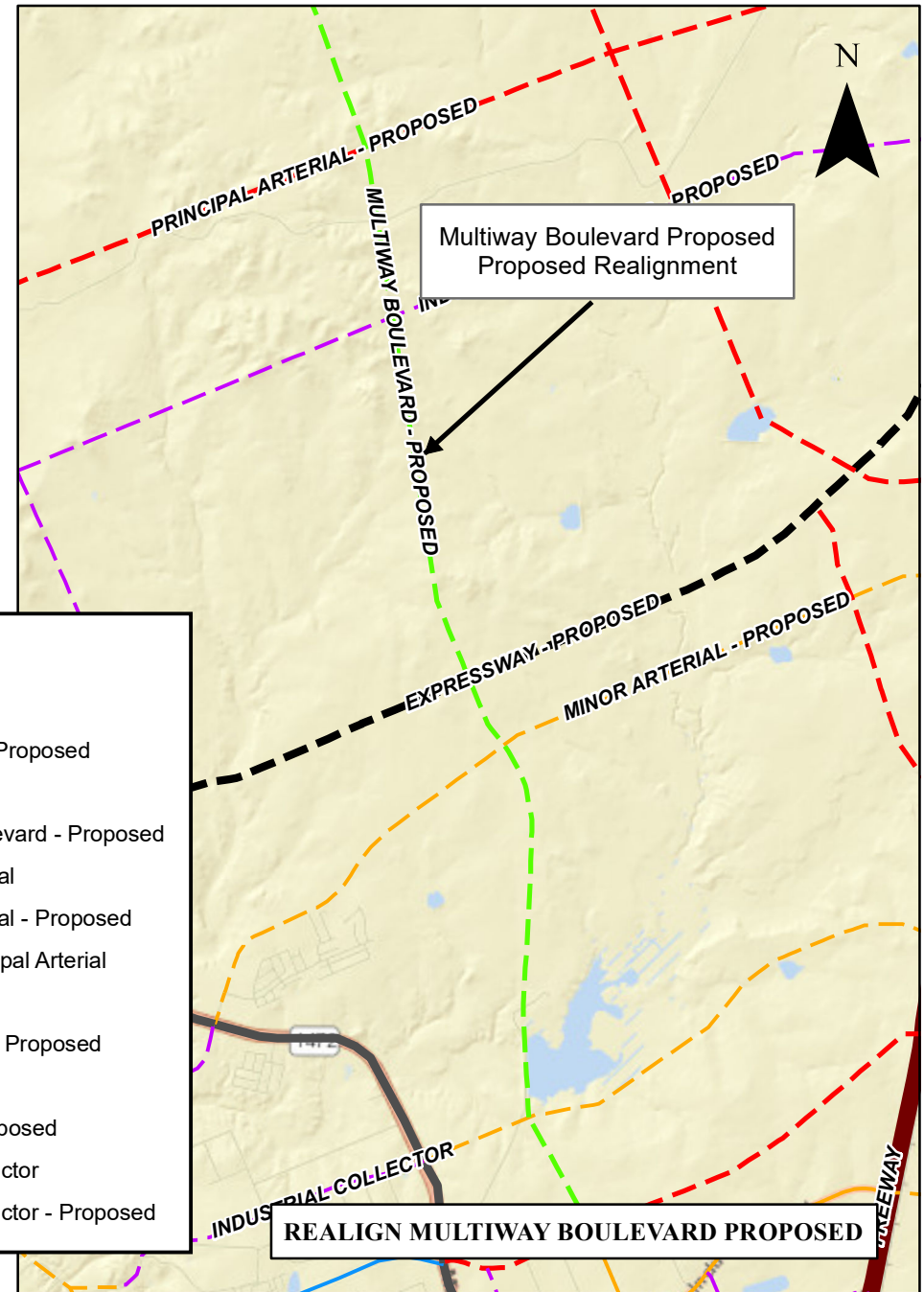
1 inch = 5,000 feet

Exhibit B

EXISTING THOROUGHFARE PLAN



PROPOSED THOROUGHFARE PLAN



Legend

- Expressway
- - - Expressway - Proposed
- Freeway
- - - Multiway Boulevard - Proposed
- Principal Arterial
- - - Principal Arterial - Proposed
- - - Modified Principal Arterial
- Minor Arterial
- - - Minor Arterial - Proposed
- Collector
- - - Collector - Proposed
- Industrial Collector
- - - Industrial Collector - Proposed



City of Laredo Planning Department
1413 Houston Street
Laredo, Texas 78040

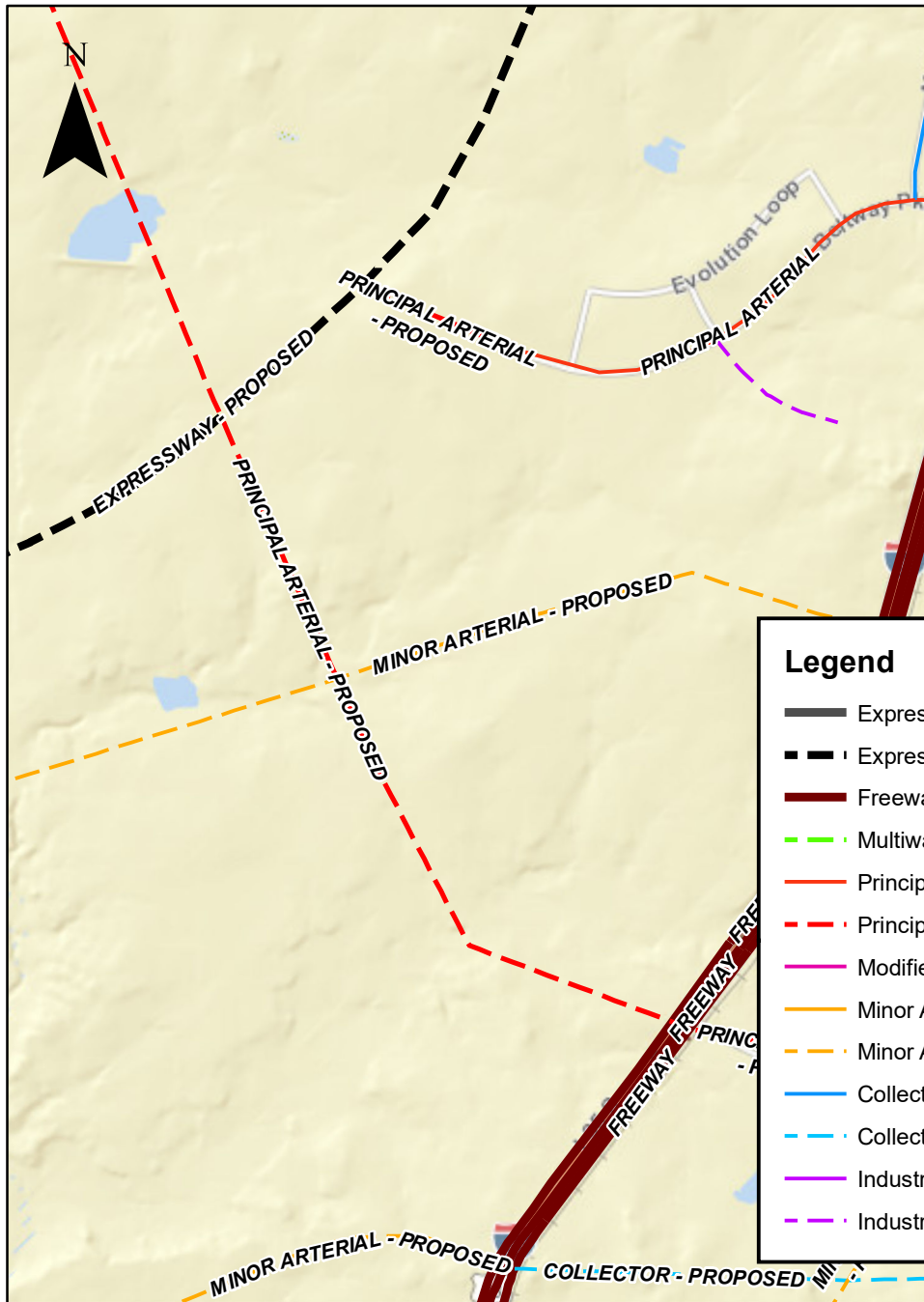
DISCLAIMER

The information provided in this map submitted to, gathered by and/or developed by the City of Laredo from various sources. Geographic Information has a high probability of becoming outdated from the time it is collected and therefore, at-present ground conditions should be assessed to determine the accuracy of provided information. The city of Laredo assumes no liability for any decisions made or actions taken or no taken by the user of this data in reliance upon any data furnished herewith. The use of this data indicates your unconditional acceptance of all risks associated with the use of this data.

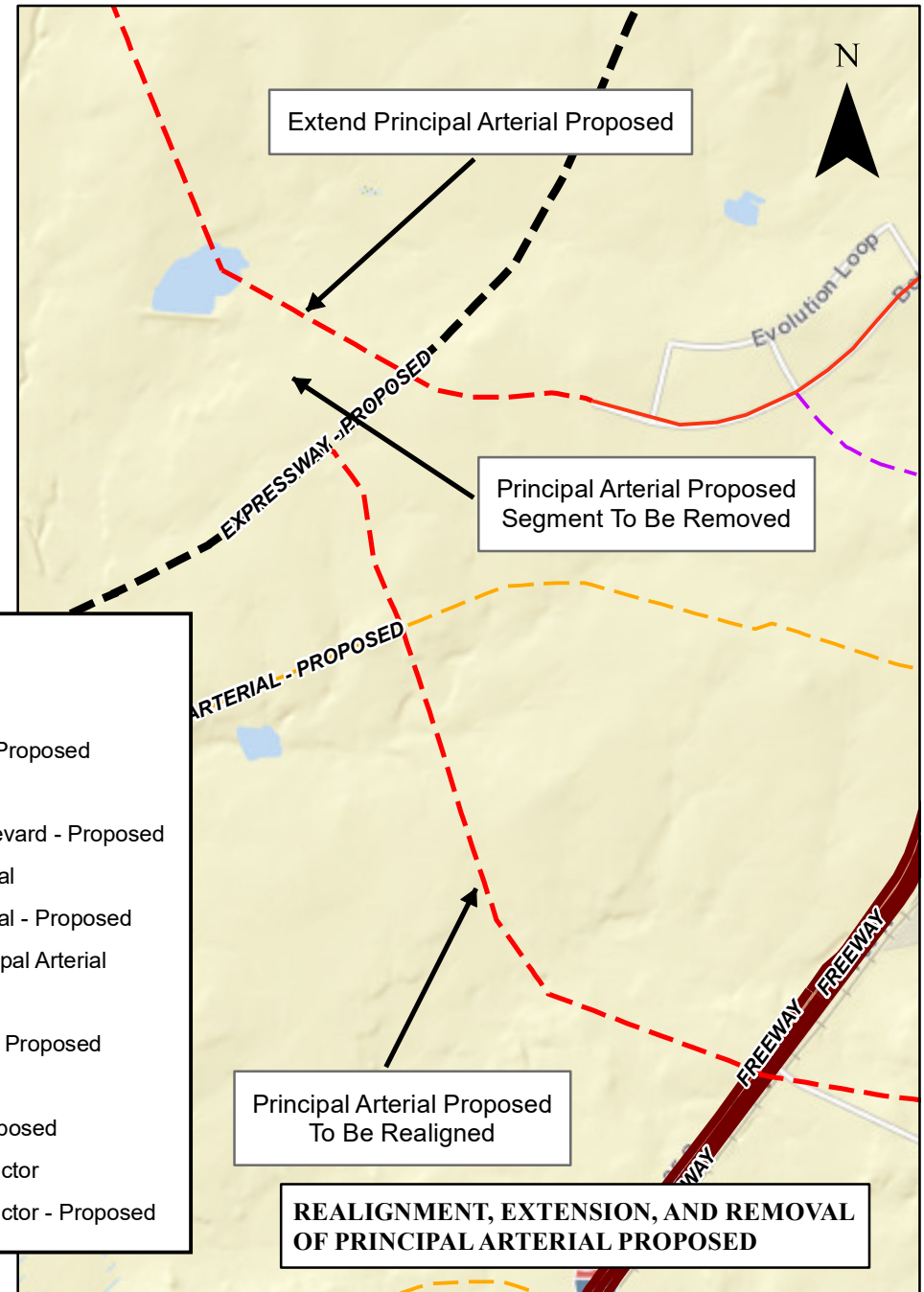
1 inch = 5,000 feet

Exhibit C

EXISTING THOROUGHFARE PLAN



PROPOSED THOROUGHFARE PLAN



Legend

- Expressway
- - - Expressway - Proposed
- Freeway
- - - Multiway Boulevard - Proposed
- Principal Arterial
- - - Principal Arterial - Proposed
- Modified Principal Arterial
- Minor Arterial
- - - Minor Arterial - Proposed
- Collector
- - - Collector - Proposed
- Industrial Collector
- - - Industrial Collector - Proposed



City of Laredo Planning Department
1413 Houston Street
Laredo, Texas 78040

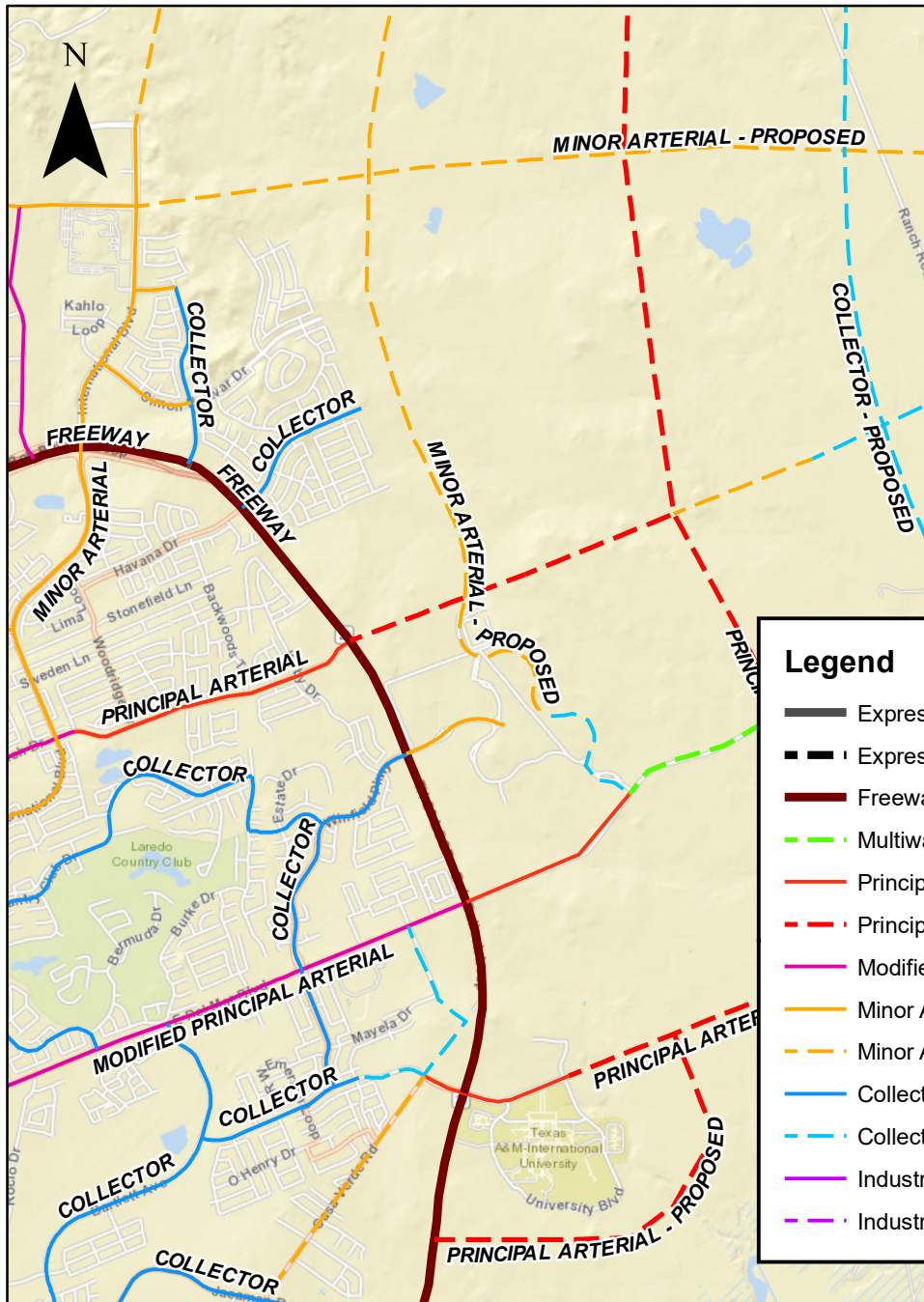
DISCLAIMER

The information provided in this map submitted to, gathered by and/or developed by the City of Laredo from various sources. Geographic Information has a high probability of becoming outdated from the time it is collected and therefore, at-present ground conditions should be assessed to determine the accuracy of provided information. The city of Laredo assumes no liability for any decisions made or actions taken or no taken by the user of this data in reliance upon any data furnished herewith. The use of this data indicates your unconditional acceptance of all risks associated with the use of this data.

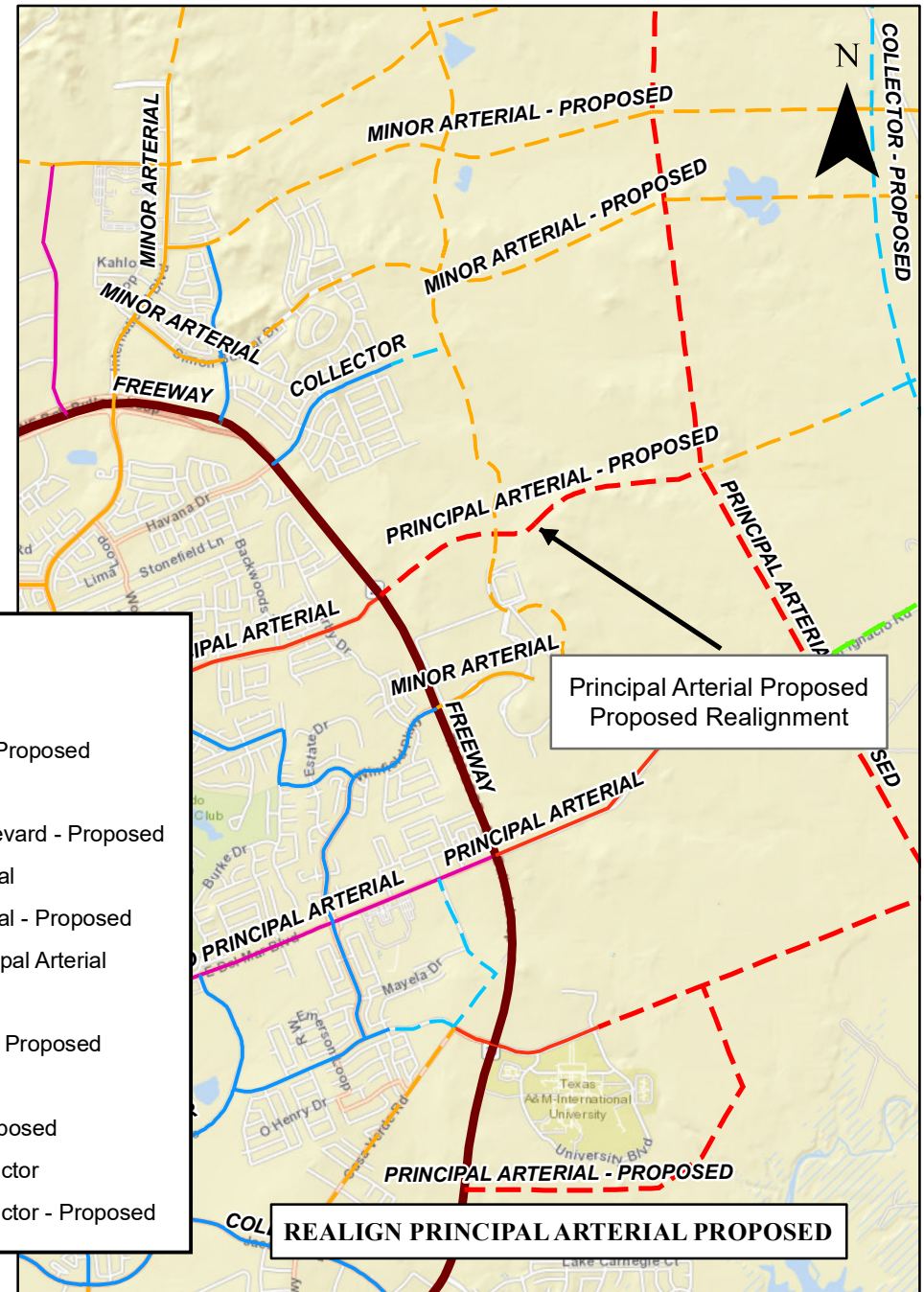
1 inch = 2,500 feet

Exhibit D

EXISTING THOROUGHFARE PLAN



PROPOSED THOROUGHFARE PLAN



Legend

- Expressway
- - - Expressway - Proposed
- Freeway
- - - Multiway Boulevard - Proposed
- Principal Arterial
- - - Principal Arterial - Proposed
- Modified Principal Arterial
- Minor Arterial
- - - Minor Arterial - Proposed
- Collector
- - - Collector - Proposed
- Industrial Collector
- - - Industrial Collector - Proposed



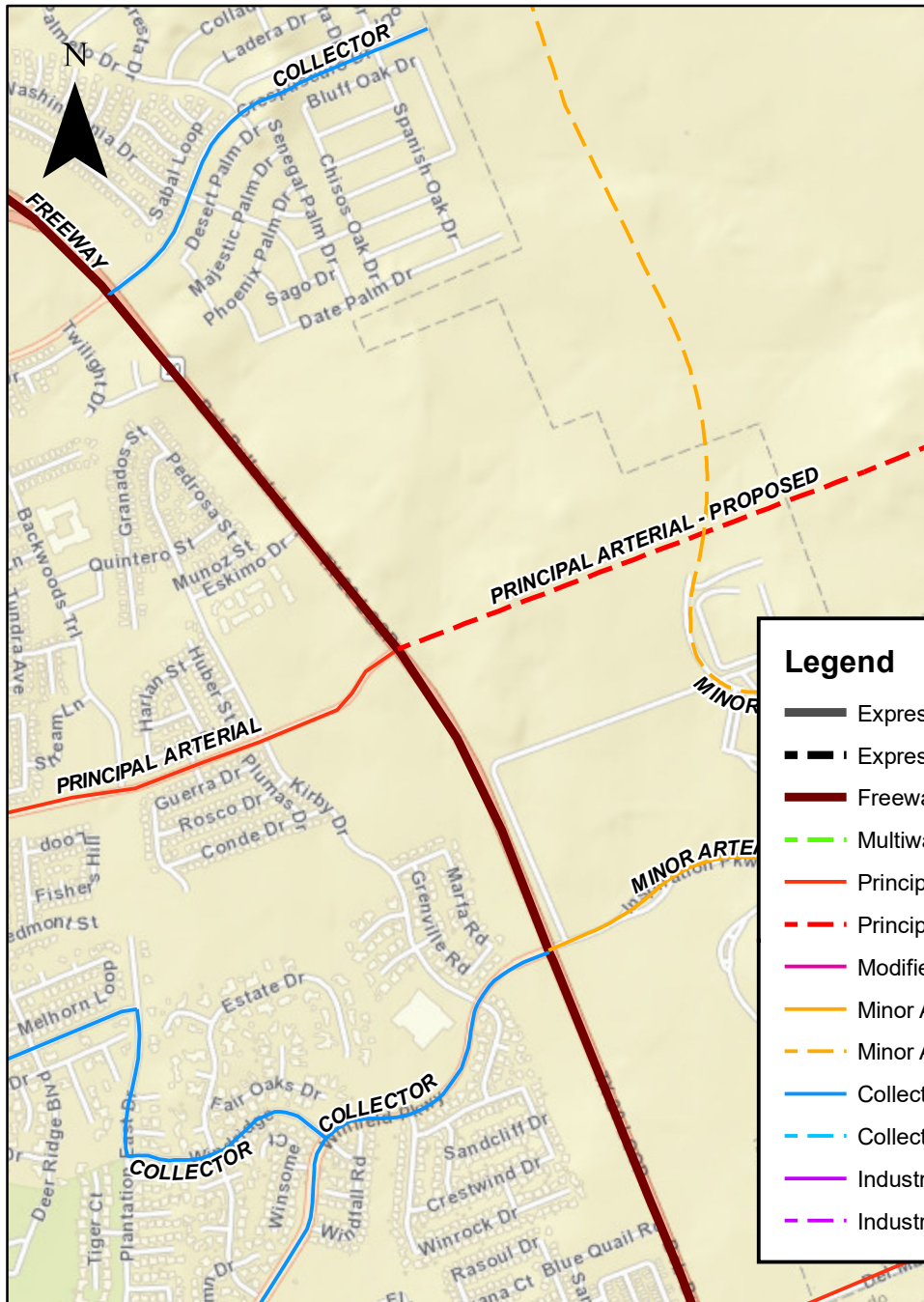
City of Laredo Planning Department
1413 Houston Street
Laredo, Texas 78040

DISCLAIMER

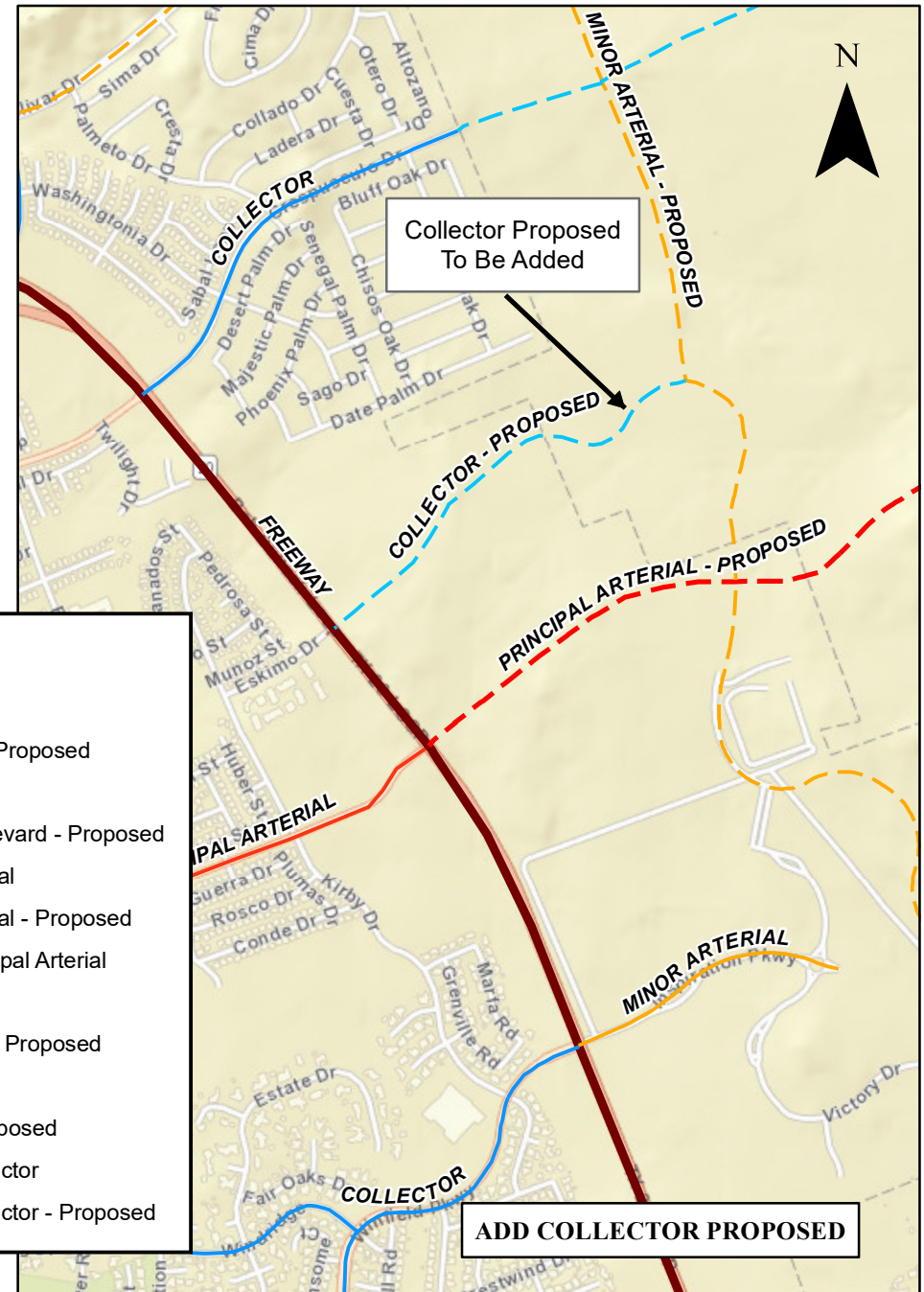
The information provided in this map submitted to, gathered by and/or developed by the City of Laredo from various sources. Geographic Information has a high probability of becoming outdated from the time it is collected and therefore, at-present ground conditions should be assessed to determine the accuracy of provided information. The city of Laredo assumes no liability for any decisions made or actions taken or no taken by the user of this data in reliance upon any data furnished herewith. The use of this data indicates your unconditional acceptance of all risks associated with the use of this data.

1 inch = 4,000 feet

EXISTING THOROUGHFARE PLAN



PROPOSED THOROUGHFARE PLAN



Legend

- Expressway
- Expressway - Proposed
- Freeway
- Multiway Boulevard - Proposed
- Principal Arterial
- Principal Arterial - Proposed
- Modified Principal Arterial
- Minor Arterial
- Minor Arterial - Proposed
- Collector
- Collector - Proposed
- Industrial Collector
- Industrial Collector - Proposed



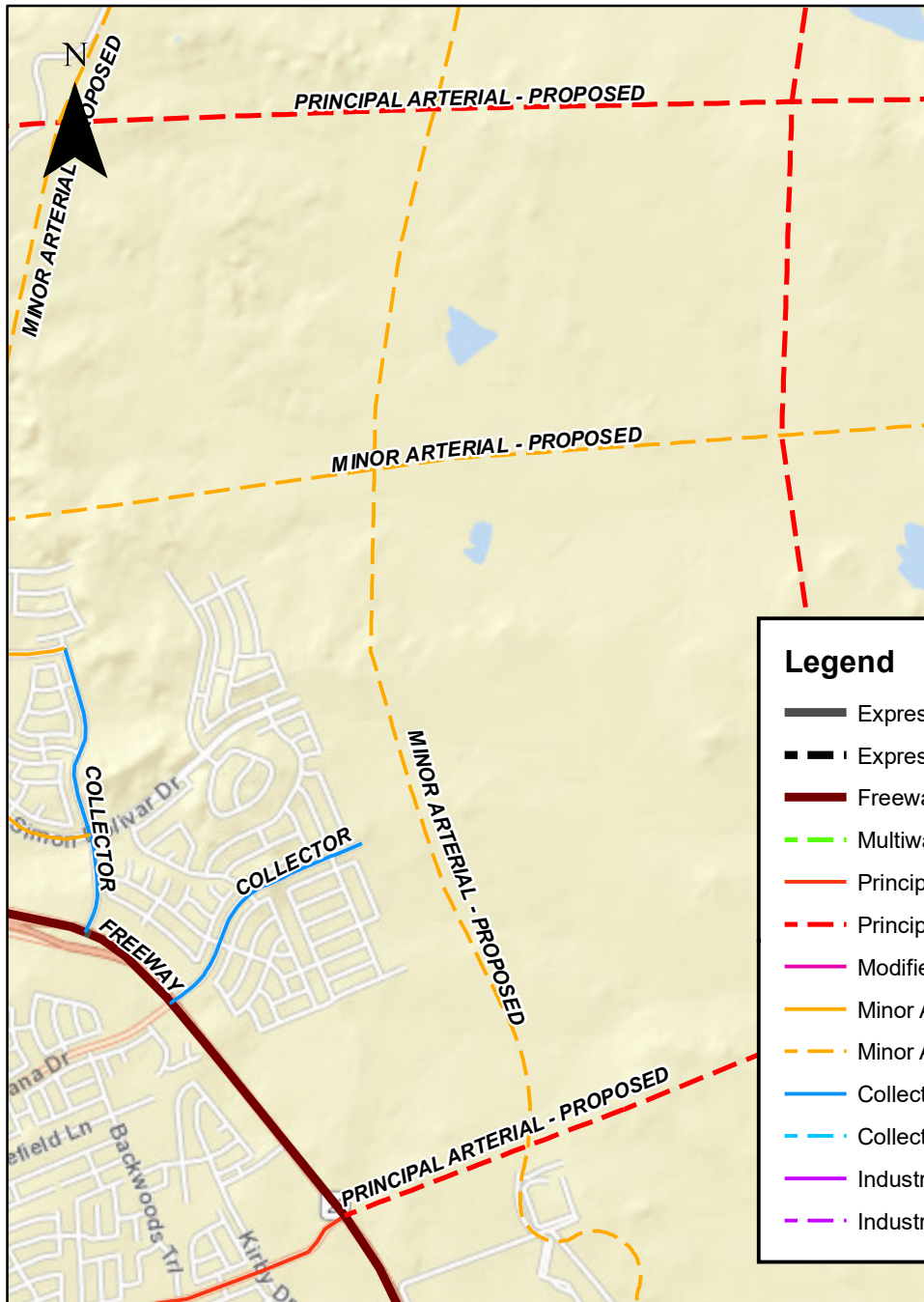
City of Laredo Planning Department
1413 Houston Street
Laredo, Texas 78040

DISCLAIMER

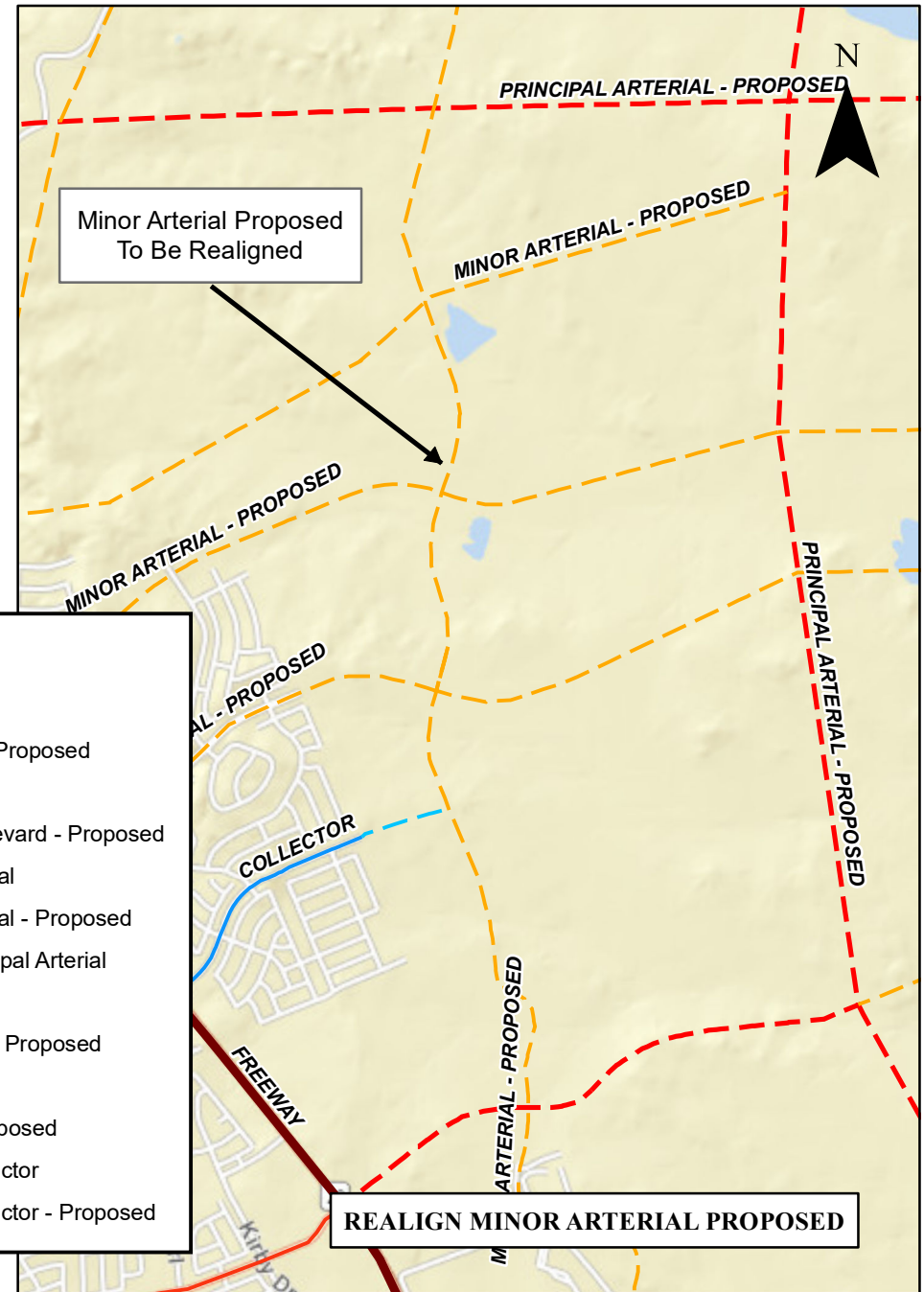
The information provided in this map submitted to, gathered by and/or developed by the City of Laredo from various sources. Geographic Information has a high probability of becoming outdated from the time it is collected and therefore, at-present ground conditions should be assessed to determine the accuracy of provided information. The city of Laredo assumes no liability for any decisions made or actions taken or no taken by the user of this data in reliance upon any data furnished herewith. The use of this data indicates your unconditional acceptance of all risks associated with the use of this data.

1 inch = 1,500 feet

EXISTING THOROUGHFARE PLAN



PROPOSED THOROUGHFARE PLAN



Legend

- Expressway
- Expressway - Proposed
- Freeway
- Multiway Boulevard - Proposed
- Principal Arterial
- Principal Arterial - Proposed
- Modified Principal Arterial
- Minor Arterial
- Minor Arterial - Proposed
- Collector
- Collector - Proposed
- Industrial Collector
- Industrial Collector - Proposed



City of Laredo Planning Department
1413 Houston Street
Laredo, Texas 78040

DISCLAIMER

The information provided in this map submitted to, gathered by and/or developed by the City of Laredo from various sources. Geographic Information has a high probability of becoming outdated from the time it is collected and therefore, at-present ground conditions should be assessed to determine the accuracy of provided information. The city of Laredo assumes no liability for any decisions made or actions taken or no taken by the user of this data in reliance upon any data furnished herewith. The use of this data indicates your unconditional acceptance of all risks associated with the use of this data.

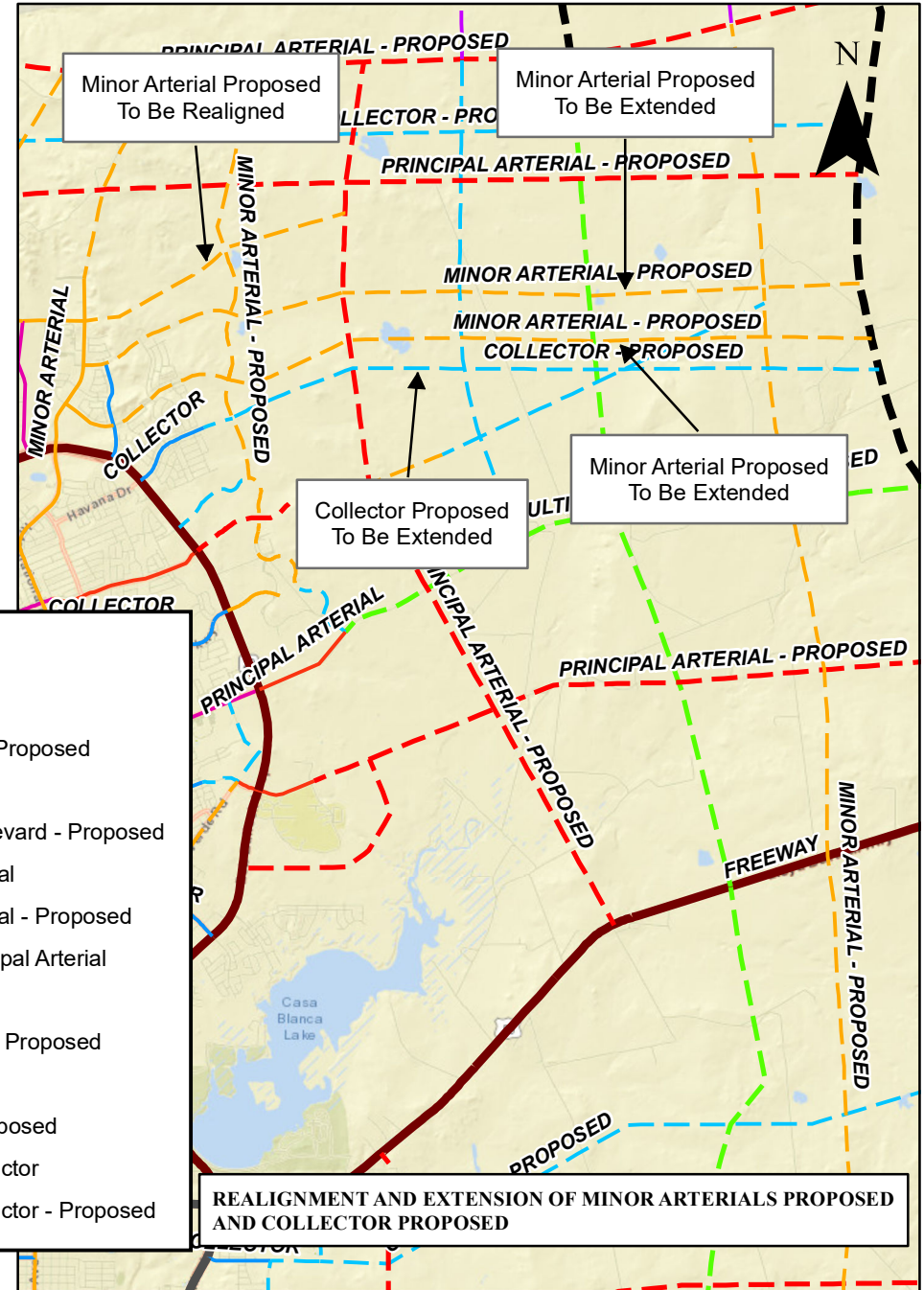
1 inch = 2,500 feet

Exhibit G

EXISTING THOROUGHFARE PLAN



PROPOSED THOROUGHFARE PLAN



Legend

- Expressway
- - - Expressway - Proposed
- Freeway
- - - Multiway Boulevard - Proposed
- Principal Arterial
- - - Principal Arterial - Proposed
- Modified Principal Arterial
- Minor Arterial
- - - Minor Arterial - Proposed
- Collector
- - - Collector - Proposed
- Industrial Collector
- - - Industrial Collector - Proposed

REALIGNMENT AND EXTENSION OF MINOR ARTERIALS PROPOSED AND COLLECTOR PROPOSED



City of Laredo Planning Department
1413 Houston Street
Laredo, Texas 78040

DISCLAIMER

The information provided in this map submitted to, gathered by and/or developed by the City of Laredo from various sources. Geographic Information has a high probability of becoming outdated from the time it is collected and therefore, at-present ground conditions should be assessed to determine the accuracy of provided information. The city of Laredo assumes no liability for any decisions made or actions taken or no taken by the user of this data in reliance upon any data furnished herewith. The use of this data indicates your unconditional acceptance of all risks associated with the use of this data.

1 inch = 7,500 feet

Exhibit H