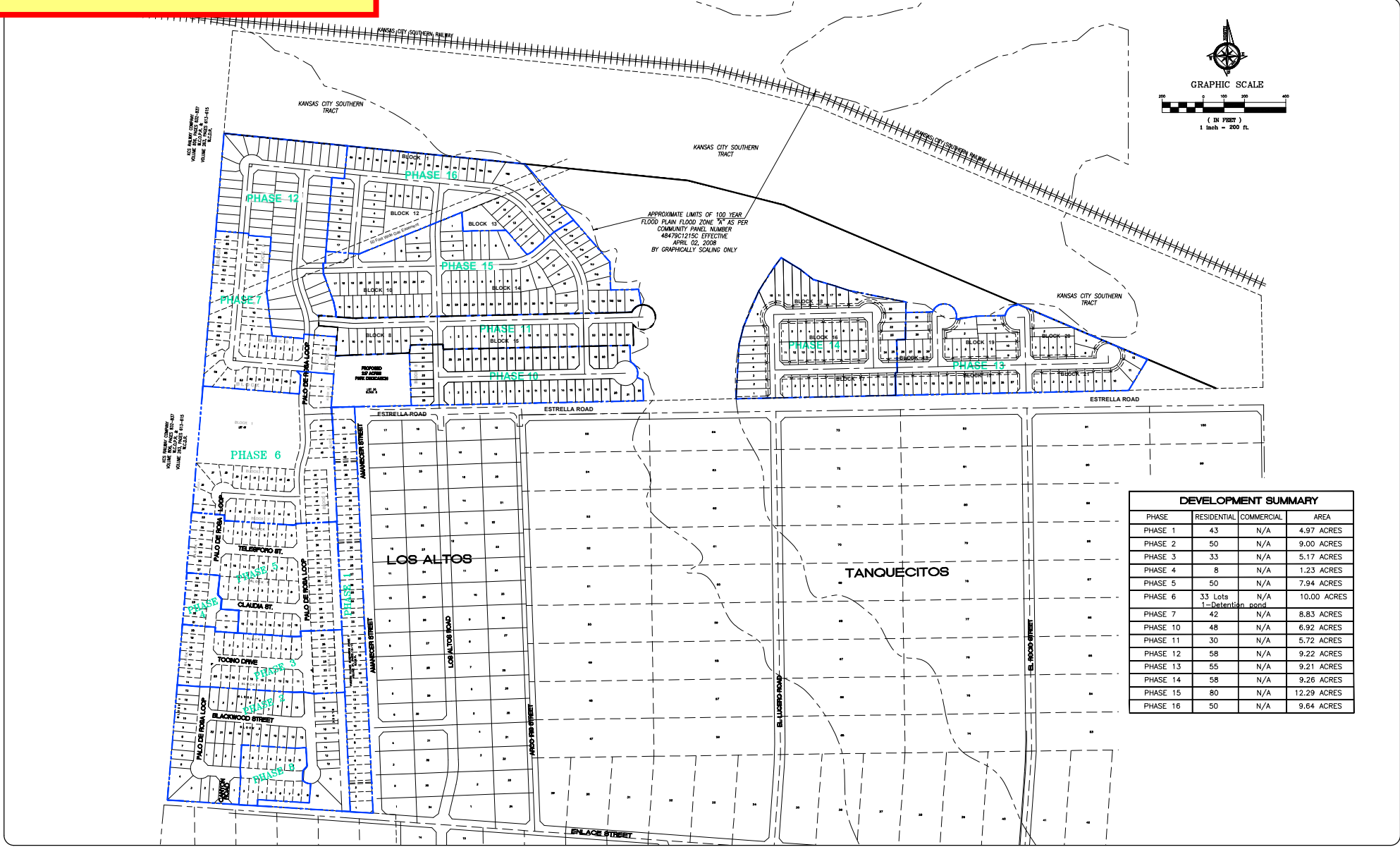


**CURRENT APPROVED
MASTERPLAN P&Z MEETING OF
3/21/2024**



DEVELOPMENT SUMMARY			
PHASE	RESIDENTIAL	COMMERCIAL	AREA
PHASE 1	43	N/A	4.97 ACRES
PHASE 2	50	N/A	9.00 ACRES
PHASE 3	33	N/A	5.17 ACRES
PHASE 4	8	N/A	1.23 ACRES
PHASE 5	50	N/A	7.94 ACRES
PHASE 6	33 Lots 1-Detention pond	N/A	10.00 ACRES
PHASE 7	42	N/A	8.83 ACRES
PHASE 10	48	N/A	6.92 ACRES
PHASE 11	30	N/A	5.72 ACRES
PHASE 12	58	N/A	9.22 ACRES
PHASE 13	55	N/A	9.21 ACRES
PHASE 14	58	N/A	9.26 ACRES
PHASE 15	80	N/A	12.29 ACRES
PHASE 16	50	N/A	9.64 ACRES

Designed By: E.E.
 Drawn By: RXL
 Checked By: F.E.
 Approved By: JPS

01/01/2022 PERMIT SET

Revised	Date	Description

File: \\sps\Projects\4321820 Phoenix Village Phase 12\14.dwg
 User: JPS Date: 03/21/2024 10:58:11 AM

 **SHERFEY
ENGINEERING
COMPANY, L.L.C.**
 T.B.P.E. FIRM REGISTRATION No. F-3132

104 Del Court
 Suite 400
 Laredo, Texas 78041
 (956) 791-3511

PHOENIX VILLAGE SUBDIVISION

CONCEPTUAL MASTER PLAN

Scale: As shown Date: 04/12/2022 Revised: 03/06/2024 SHEET 1 OF 1

PROJ. NO. 8324
1