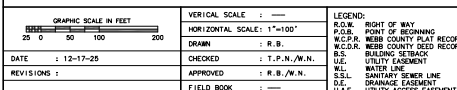


1 OF 1


**PORRAS NANCE**  
**ENGINEERING**

OFFICE (956) 724-3097

ENGINEER/SURVEYOR:  
PORRAS NANCE ENGINEERING  
304 E. CALTON RD.  
P.O. BOX 1670  
LAREDO, TEXAS 78044  
(956) 724-3097 PH  
(956) 724-9208 FX

PROJECT DATA:	
ACRES	: 3.693 ACRES
LOTS	: 1 LOT
R.O.W.	: N/A
B/B	: N/A

PLAT OF:
----------

**BELA VISTA COMMERCIAL, PHASE 1**  
3.693 ACRE TRACT  
BEING OUT OF NEWMAN A TS, LP THIRD TRACT  
RECORDED IN VOLUME 3363, PAGES 229-239, W.C.D.R.  
PORCION 36 ~ ABSTRACT 473, LAUREANO SALINAS, ORIGINAL GRANTEE  
CITY OF LAREDO, WEBB COUNTY, TEXAS