

AERIAL MAP

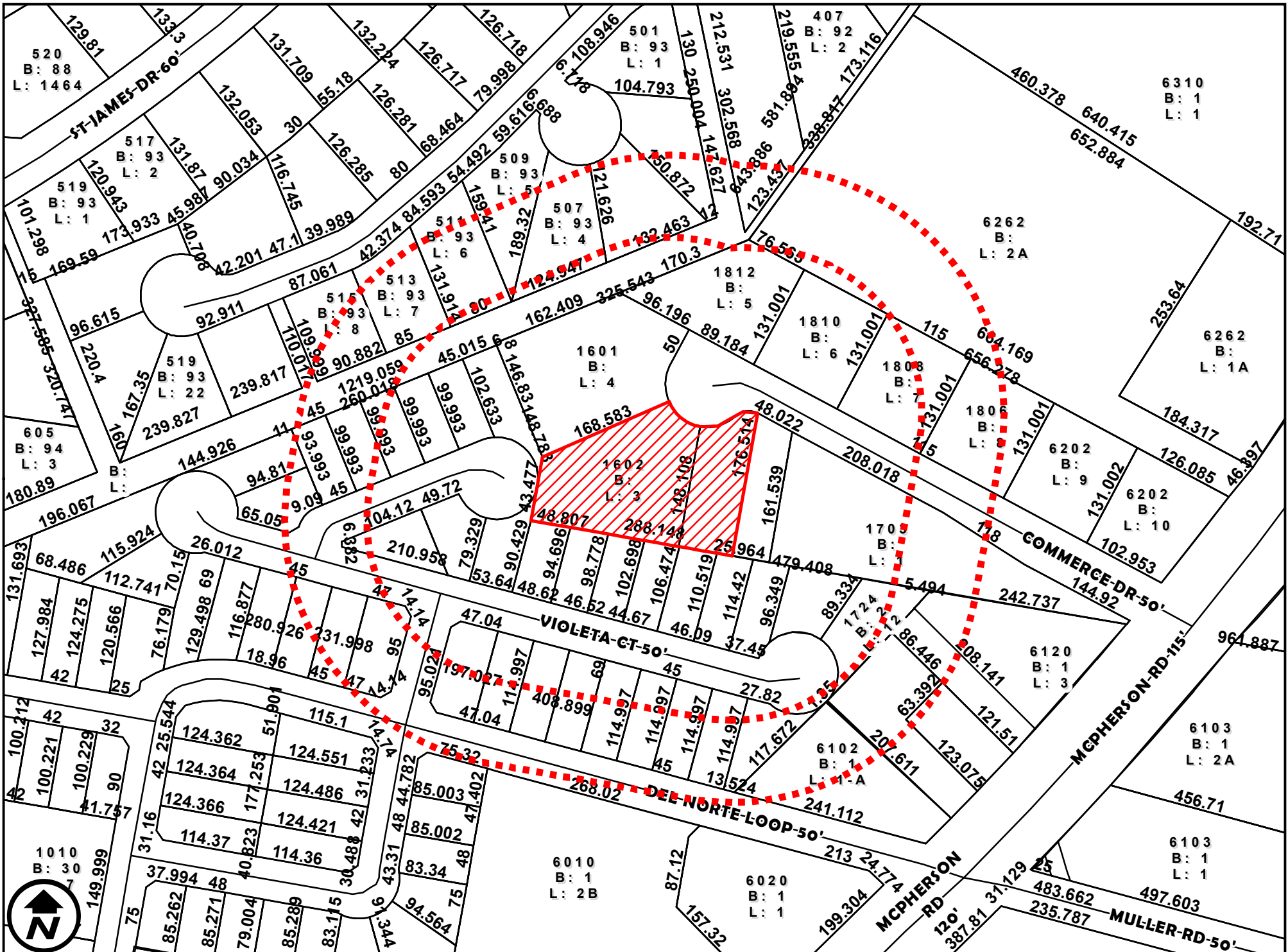
ZC-035-2024

COUNCIL DISTRICT 5

1602 AND 1702 COMMERCE DRIVE

1 inch = 150 feet

APPLICATION FOR
B-3 (COMMUNITY BUSINESS DISTRICT) TO
C.U.P FOR BUILDING MATERIAL SALES (CABINET AND COUNTERTOP SHOP MANUFACTURING)
WITH OUTSIDE STORAGE (ACCESSORY USE)



DIMENSIONS MAP

ZC-035-2024

COUNCIL DISTRICT 5

1602 AND 1702 COMMERCE DRIVE

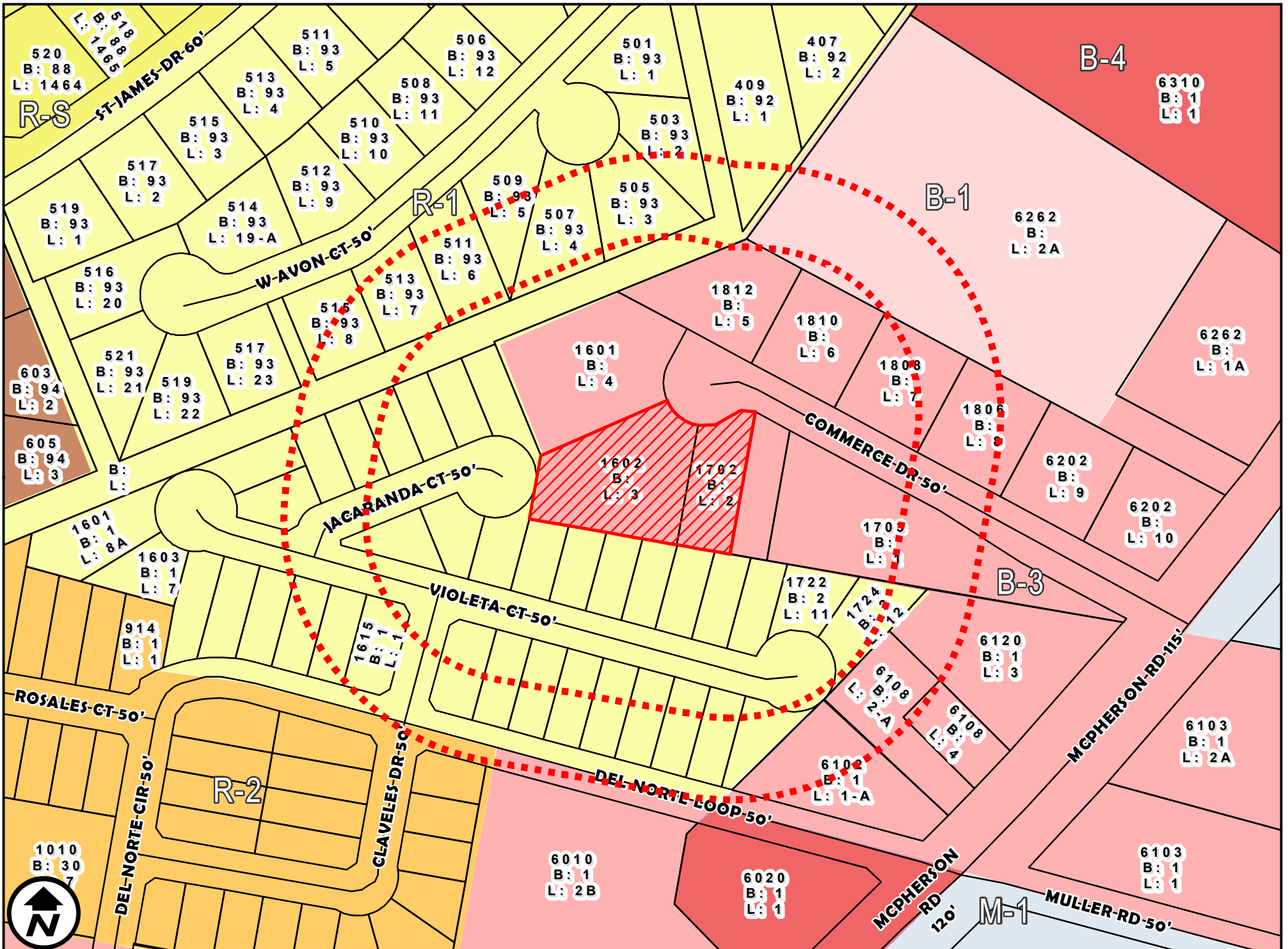
1 inch = 150 feet

APPLICATION FOR

B-3 (COMMUNITY BUSINESS DISTRICT) TO

C.U.P FOR BUILDING MATERIAL SALES (CABINET AND COUNTERTOP SHOP MANUFACTURING)

WITH OUTSIDE STORAGE (ACCESORY USE)



ZONING MAP

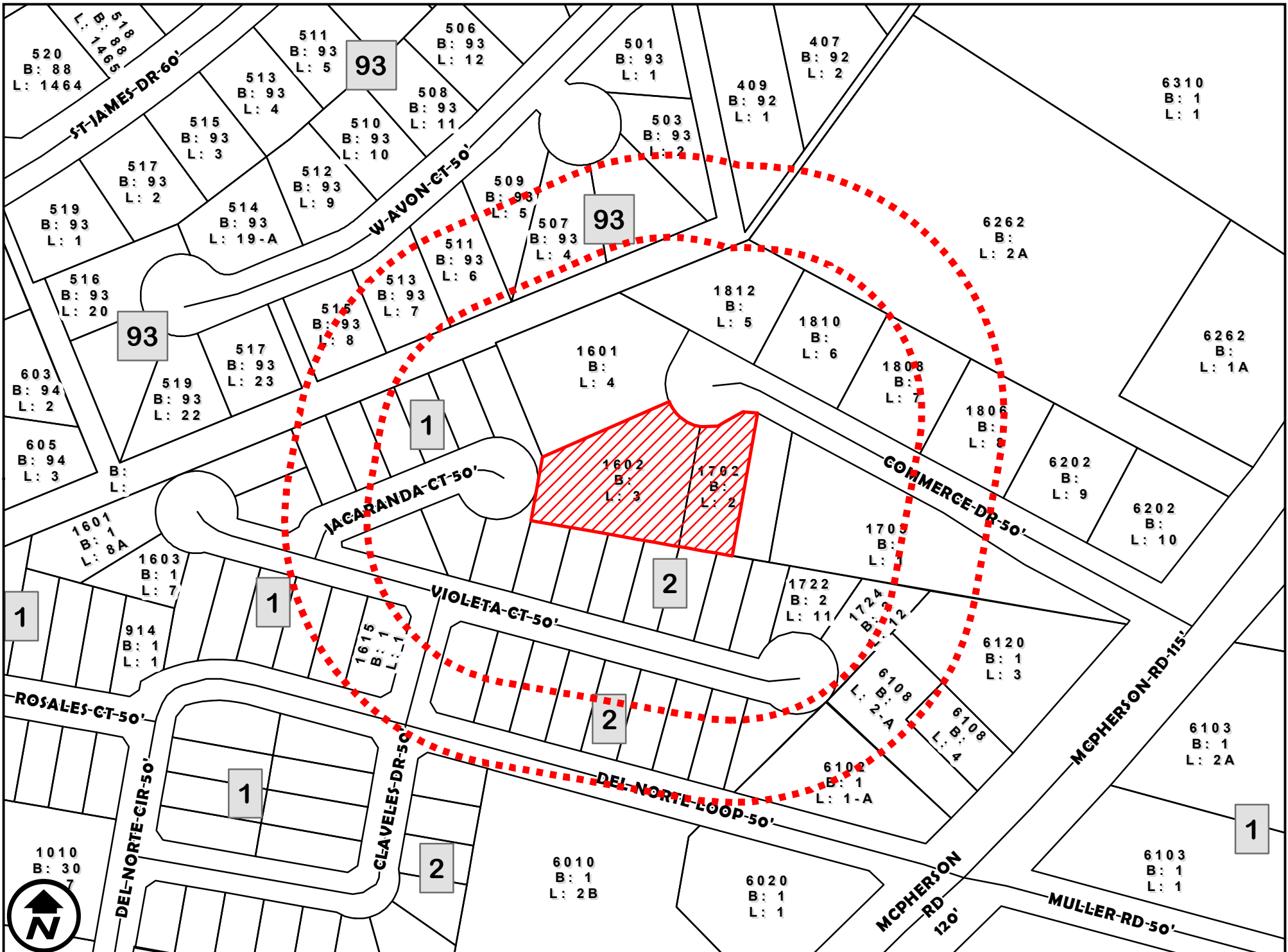
ZC-035-2024

COUNCIL DISTRICT 5

1602 AND 1702 COMMERCE DRIVE

1 inch = 150 feet

APPLICATION FOR
B-3 (COMMUNITY BUSINESS DISTRICT) TO
C.U.P FOR BUILDING MATERIAL SALES (CABINET AND COUNTERTOP SHOP MANUFACTURING)
WITH OUTSIDE STORAGE (ACCESORY USE)



SURVEY MAP

ZC-035-2024

COUNCIL DISTRICT 5

1602 AND 1702 COMMERCE DRIVE

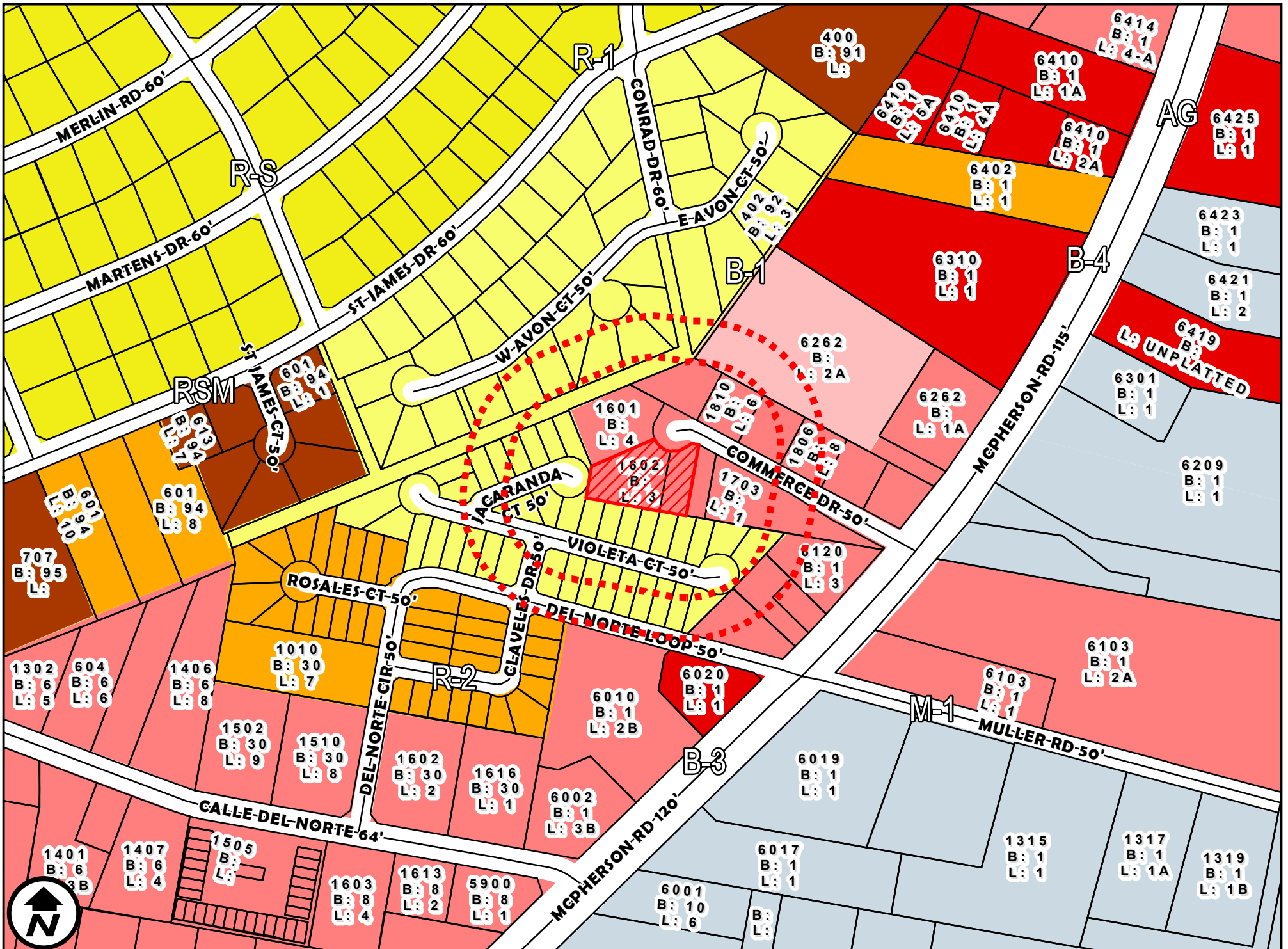
1 inch = 150 feet

APPLICATION FOR

B-3 (COMMUNITY BUSINESS DISTRICT) TO

C.U.P FOR BUILDING MATERIAL SALES (CABINET AND COUNTERTOP SHOP MANUFACTURING)

WITH OUTSIDE STORAGE (ACCESORY USE)



ZONING OVERVIEW

ZC-035-2024

COUNCIL DISTRICT 5

1602 AND 1702 COMMERCE DRIVE

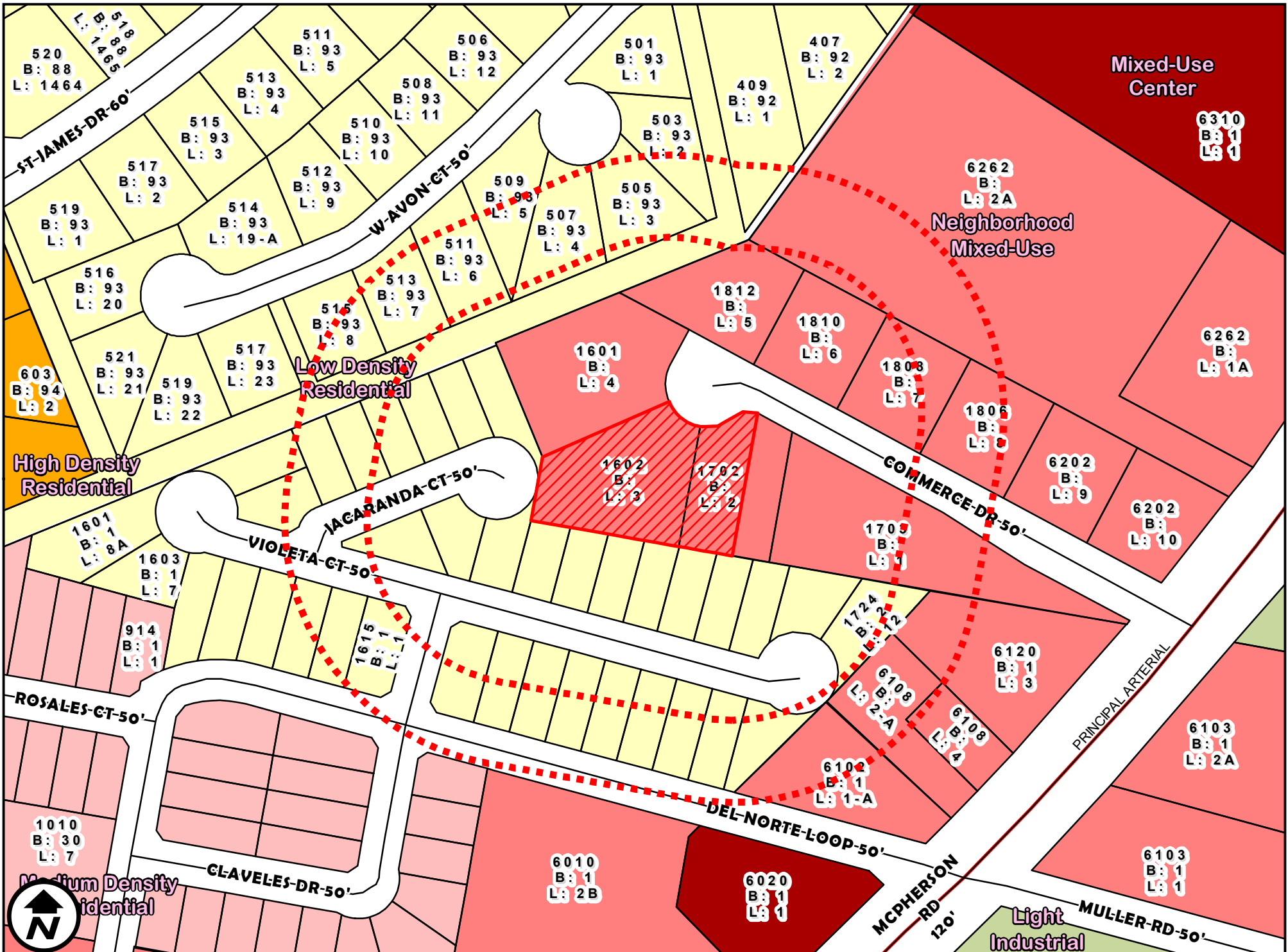
1 inch = 300 feet

APPLICATION FOR

B-3 (COMMUNITY BUSINESS DISTRICT) TO

C.U.P FOR BUILDING MATERIAL SALES (CABINET AND COUNTERTOP SHOP MANUFACTURING)

WITH OUTSIDE STORAGE (ACCESSORY USE)



FUTURE LANDUSE

1 inch = 150 feet

ZC-035-2024
COUNCIL DISTRICT 5
1602 AND 1702 COMMERCE DRIVE

APPLICATION FOR
B-3 (COMMUNITY BUSINESS DISTRICT) TO
C.U.P FOR BUILDING MATERIAL SALES (CABINET AND COUNTERTOP SHOP MANUFACTURING)
WITH OUTSIDE STORAGE (ACCESORY USE)

