

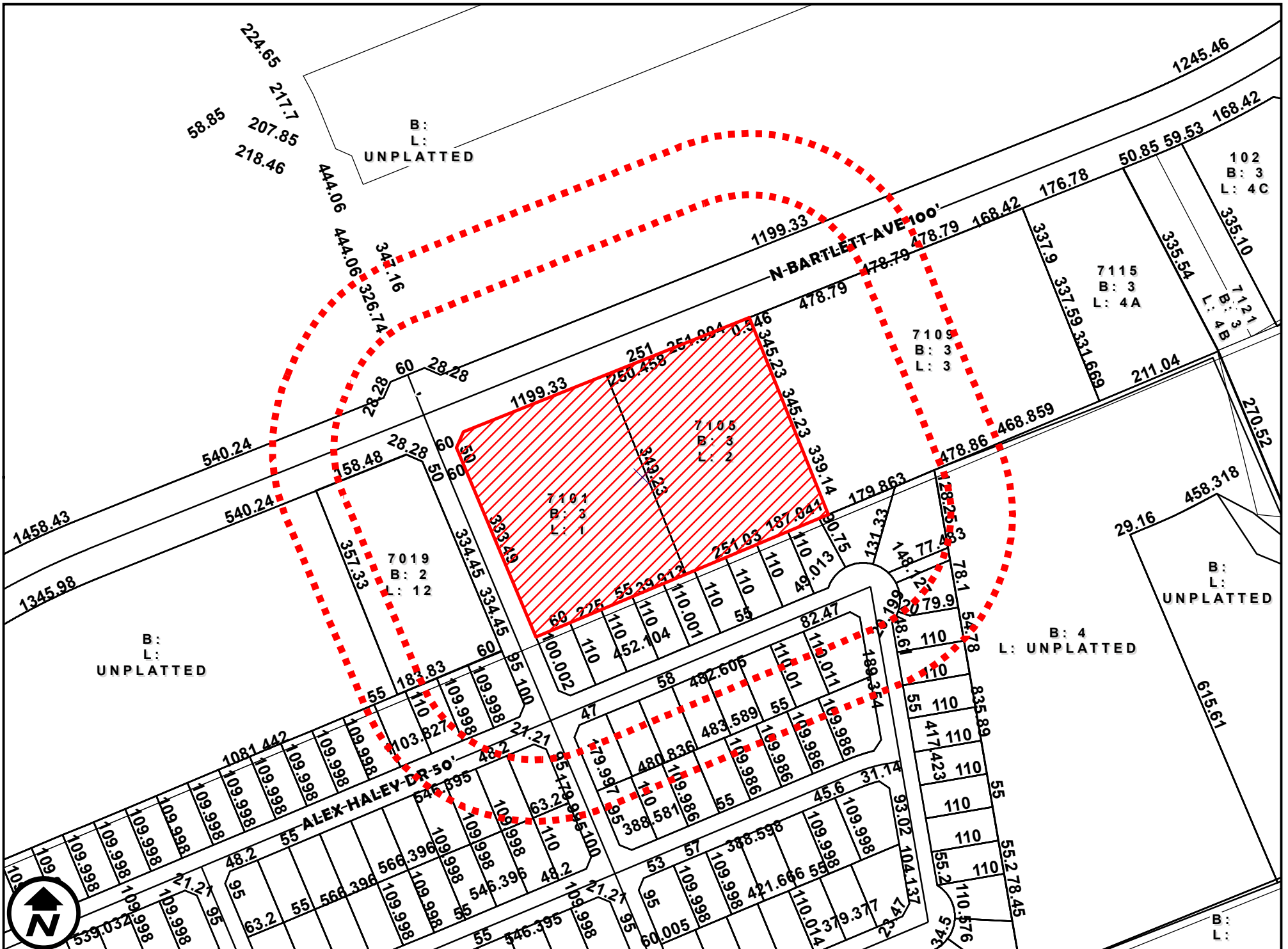
AERIAL MAP

1 inch = 200 feet

ZC-033-2025

COUNCIL DISTRICT 5  
7101 AND 7105 NORTH BARTLETT AVENUE

APPLICATION FOR  
B-3 (COMMUNITY BUSINESS DISTRICT) TO  
C.U.P FOR HOSPITAL



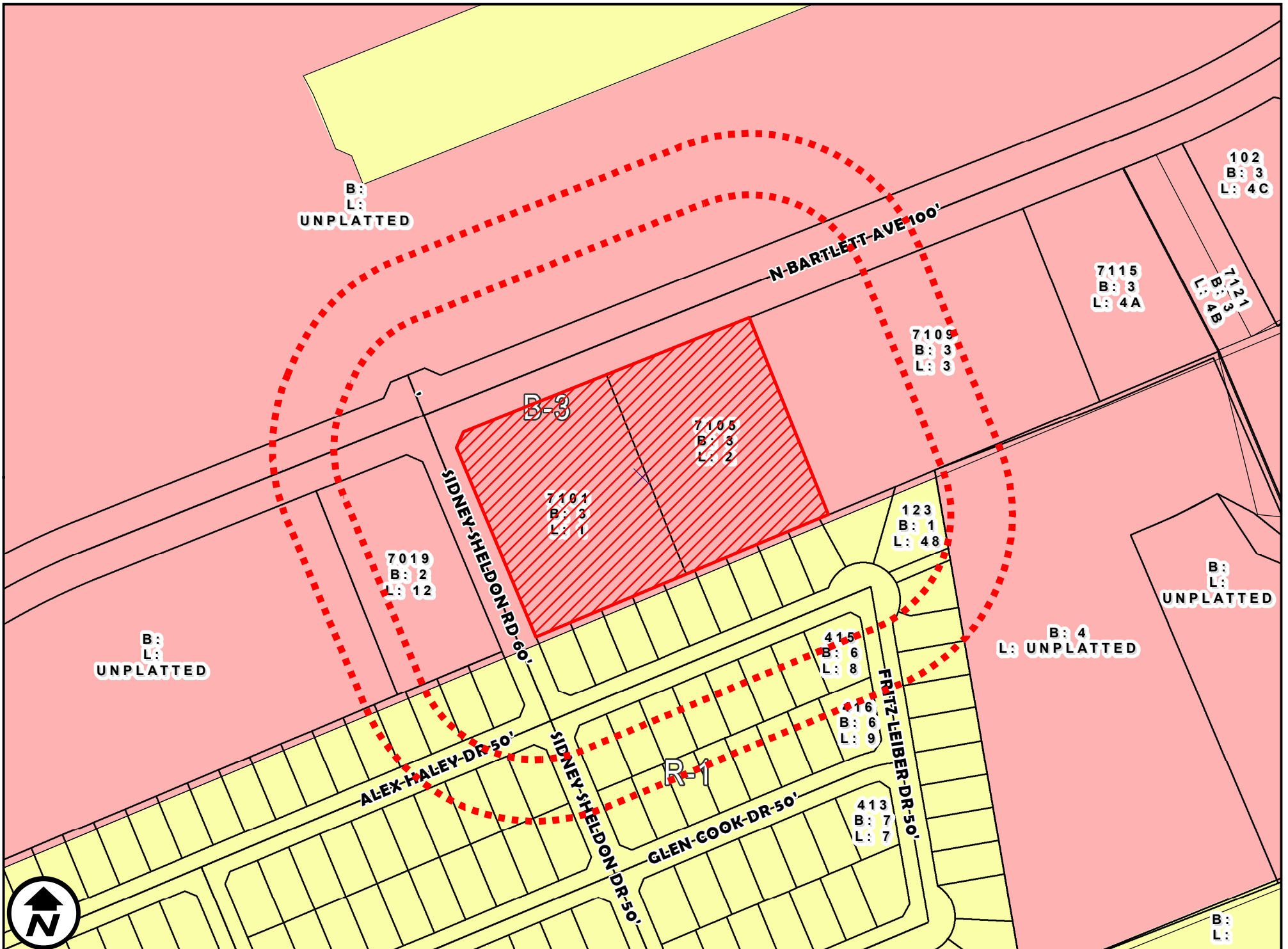
DIMENSIONS MAP

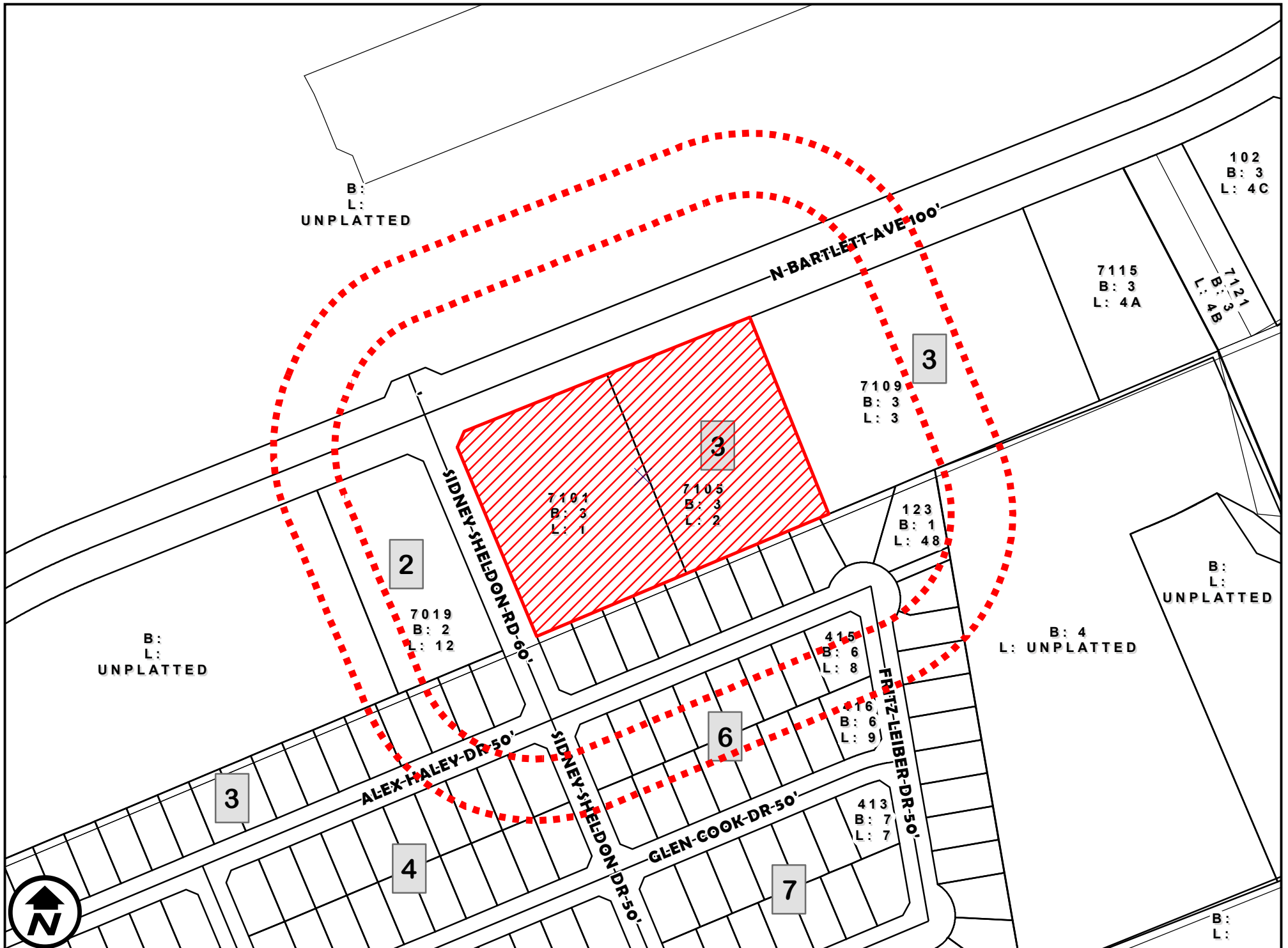
1 inch = 200 feet

ZC-033-2025

COUNCIL DISTRICT 5  
7101 AND 7105 NORTH BARTLETT AVENUE

APPLICATION FOR  
B-3 (COMMUNITY BUSINESS DISTRICT) TO  
C.U.P FOR HOSPITAL





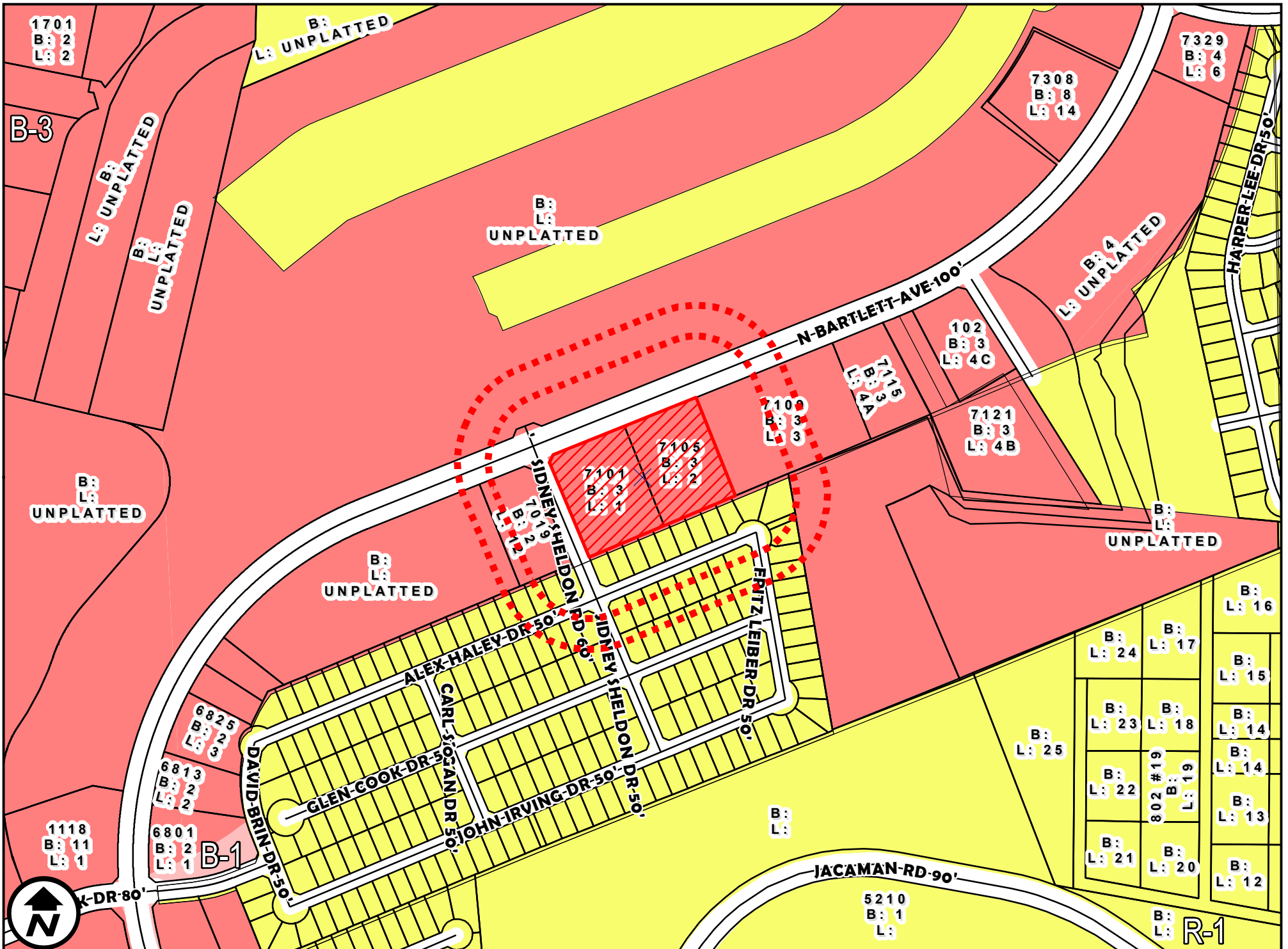
SURVEY MAP

1 inch = 200 feet

ZC-033-2025

COUNCIL DISTRICT 5  
7101 AND 7105 NORTH BARTLETT AVENUE

APPLICATION FOR  
B-3 (COMMUNITY BUSINESS DISTRICT) TO  
C.U.P FOR HOSPITAL



ZONING OVERVIEW

1 inch = 400 feet

ZC-033-2025

COUNCIL DISTRICT 5  
 7101 AND 7105 NORTH BARTLETT AVENUE

APPLICATION FOR  
 B-3 (COMMUNITY BUSINESS DISTRICT) TO  
 C.U.P FOR HOSPITAL



