

LEGEND	
●	IRON ROD FOUND
○	IRON ROD SET
---	BOUNDARY LINE
---	LOT LINE
---	TRACT LINE
---	CENTERLINE
---	DEED LINE
---	PORTION LINE
---	BUILDING SETBACK
---	UTILITY EASEMENT
---	FLOOD PLAIN LINE
---	MAJOR CONTOURS
---	MINOR CONTOURS

- PLAT NOTES
1. SIDEWALK, DRIVEWAYS, AND TREES WILL BE INSTALLED AT THE TIME OF ISSUANCE OF BUILDING PERMITS IN ACCORDANCE WITH THE LAREDO LAND DEVELOPMENT CODE.
 2. ALL CURB CUTS SHALL COMPLY WITH THE TRANSPORTATION ELEMENT OF THE CITY OF LAREDO COMPREHENSIVE PLAN.
 3. THE SETBACK SHALL BE DETERMINED BASED ON THE CURRENT ZONING IN ACCORDANCE TO SECTION 24.17.1 OF THE LAREDO LAND DEVELOPMENT CODE.
 4. BEGINNING POINT FOR 25.15 ACRE TRACT, A 2" IRON ROD FOUND AT THE EAST RIGHT-OF-WAY LINE OF VICTORY DRIVE (SPS N1710037.000, E100318.070).
 5. BY GRAPHICALLY PLOTTING, THIS PARCEL WAS DETERMINED TO NOT BE WITHIN A 100 YEAR FREQUENCY FLOOD ZONE AS PER FLOOD INSURANCE RATE MAPS FOR WEBB COUNTY, TEXAS COMMUNITY PANEL NO. 4810210022 & 4810210102 WITH AN EFFECTIVE DATE, APRIL 2, 2008.
 6. ANY IMPROVEMENTS WITHIN THE FLOODPLAIN MUST COMPLY WITH THE LAND DEVELOPMENT CODE CHAPTER 24, SECTION 24-040.
 7. REAR FENCES OF PROPERTIES ABUTTING SWALES SHALL BE CONSTRUCTED IN SUCH A WAY NOT TO IMPED FLOW.
 8. THIS PLAT IS SUBJECT TO MAINTENANCE AND MONITORING AGREEMENT RECORDED AS VOL. _____ PG. _____ OF THE OFFICIAL PUBLISH RECORD OF WEBB COUNTY, TEXAS.
 9. THE HOMEOWNERS ASSOCIATION (HOA) WILL MAINTAIN UNSUBDIVIDABLE LOTS.
 10. THE HOMEOWNERS ASSOCIATION (HOA) WILL MAINTAIN ISLANDS ON CUL-DE-SACS.
 11. THE HOMEOWNERS ASSOCIATION (HOA) WILL MAINTAIN THE NO PARKING, ONE-WAY, AND RED CURB IMPROVEMENTS IN ALL THE CUL-DE-SACS PROPOSED MEDIANS.
 12. FOR ADDITIONAL SIGHT DISTANCE EASEMENT ALONG SLUERY DAVIS LANE, LIMITED CONSTRUCTION AND LANDSCAPING ZONE, STRUCTURES SHALL NOT EXCEED 3.5 FEET IN HEIGHT AND LANDSCAPING IN THIS AREA SHALL BE LIMITED TO SHRUBS OR PLANTS THAT DO NOT EXCEED 3.5 FEET IN HEIGHT, MEASURED FROM THE CENTERLINE OR ADJACENT ROADWAY, AS PER LAND DEVELOPMENT CODE 24.03.15(9A). AREA 1A' = 20466 SF. AREA 1A' = 1,188.03 SF.



FINAL PLAT
**THE COVES AT WINFIELD
 PHASE 7C**

REGISTERED PROFESSIONAL ENGINEER AND ARCHITECT
 REGISTERED PROFESSIONAL SURVEYOR
 REGISTERED PROFESSIONAL LAND SURVEYOR
 CITY OF LAREDO, WEBB COUNTY, TEXAS

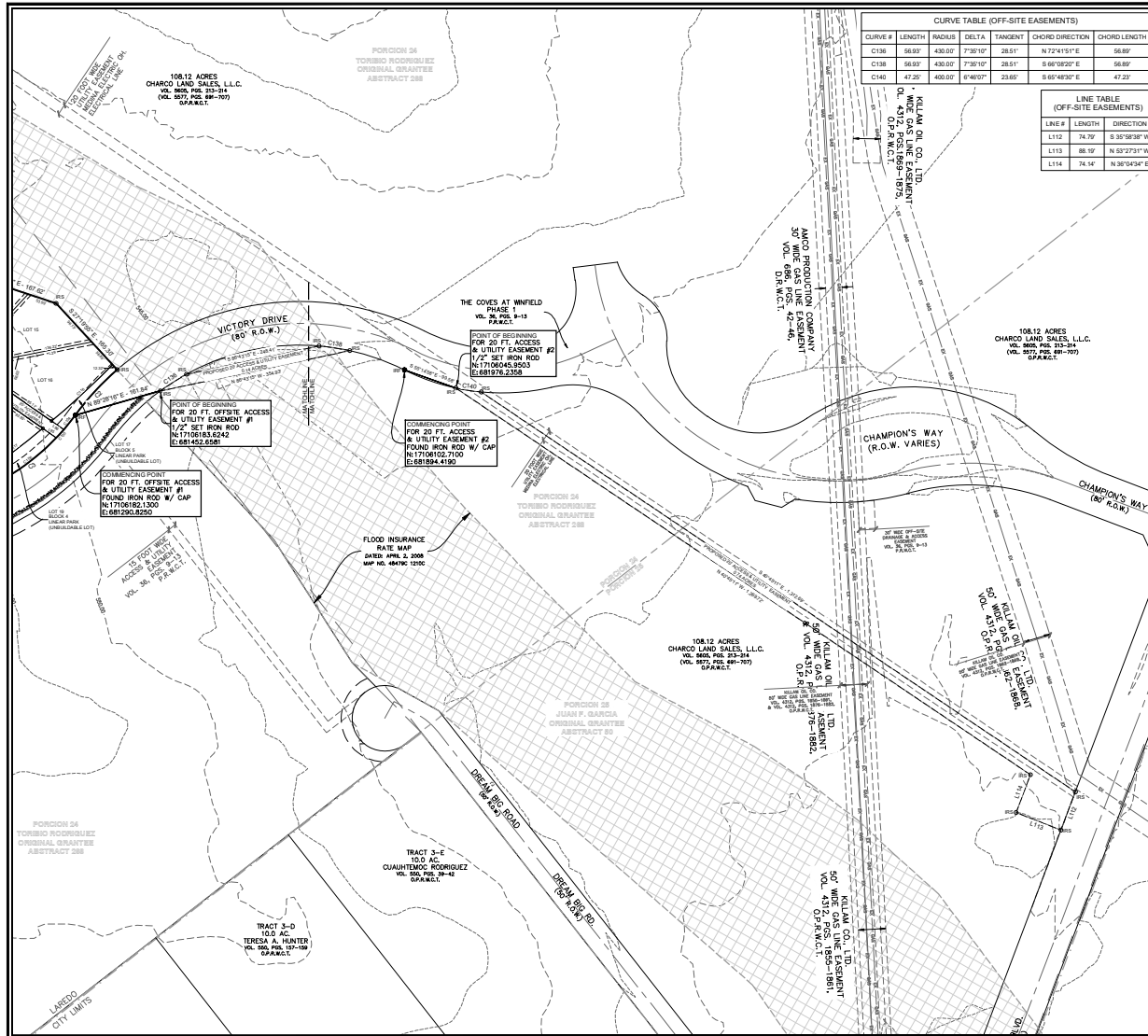


SHEET NAME:
 FINAL PLAT

REVISED DATE:

DESIGNED BY	M.C. J.A.M.
CHECKED BY	V.M. J.P.R.
APPROVED BY	H.S.
JOB NO.	03-153-19-000-0000
DATE	02-15-2025
SCALE	1" = 100'
DATE	11.17

1 of 4

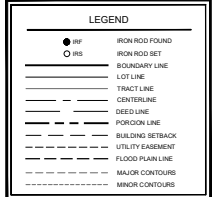
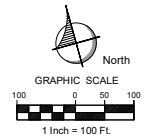
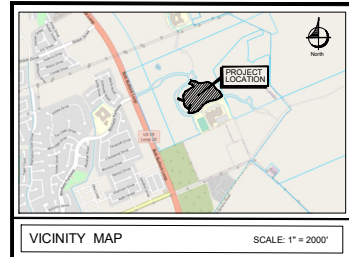


CURVE TABLE (OFF-SITE EASEMENTS)

CURVE #	LENGTH	RADIUS	DELTA	TANGENT	CHORD DIRECTION	CHORD LENGTH
C136	56.93	430.02	7°38'10"	28.61'	N 72°41'51" E	56.89'
C138	56.93	430.02	7°38'10"	28.61'	S 66°08'20" E	56.89'
C140	47.25	400.02	6°48'07"	23.60'	S 66°48'30" E	47.23'

LINE TABLE (OFF-SITE EASEMENTS)

LINE #	LENGTH	DIRECTION
L112	74.79'	S 39°58'38" W
L113	88.19'	N 59°27'31" W
L114	74.14'	N 30°04'34" E



- PLAT NOTES
- SIDEWALK, DRIVEWAYS, AND TREES WILL BE INSTALLED AT THE TIME OF ISSUANCE OF BUILDING PERMITS IN ACCORDANCE WITH THE LAREDO LAND DEVELOPMENT CODE.
 - ALL CURB CUTS SHALL COMPLY WITH THE TRANSPORTATION ELEMENT OF THE CITY OF LAREDO COMPREHENSIVE PLAN.
 - THE SETBACK SHALL BE DETERMINED BASED ON THE CURRENT ZONING IN ACCORDANCE TO SECTION 24.11 OF THE LAREDO LAND DEVELOPMENT CODE.
 - BEGINNING POINT FOR 20.15 ACRE TRACT: A 1/2" IRON ROD FOUND AT THE EAST RIGHT-OF-WAY LINE OF VICTORY DRIVE (OPEN N 1710613.6242 E 681919.2358 S 07.5').
 - BY GRAPHICALLY FLOTTING, THIS PARCEL WAS DETERMINED TO NOT BE WITHIN A 100 YEAR FREQUENCY FLOOD ZONE AS PER FLOOD INSURANCE RATE MAPS FOR WEBB COUNTY, TEXAS COMMUNITY PANEL No. 8470323C & 8470323D WITH AN EFFECTIVE DATE: APRIL 2, 2008.
 - ANY IMPROVEMENTS WITHIN THE FLOODPLAIN MUST COMPLY WITH THE LAND DEVELOPMENT CODE CHAPTER 24, SECTION 24.09.
 - FINISHED FLOOR ELEVATIONS, MECHANICAL EQUIPMENT, AND LOWEST STRUCTURAL MEMBER FOR LOTS WITHIN A FLOOD ZONE SHALL BE 1' ABOVE THE BASE FLOOD ELEVATION.
 - REAR FENCES OF PROPERTIES ABUTTING SWALES SHALL BE CONSTRUCTED IN SUCH A WAY NOT TO IMPED FLOW.
 - THIS PLAT IS SUBJECT TO MAINTENANCE AND MONITORING AGREEMENT RECORDED AS VOL. _____ PG. _____ OF THE OFFICIAL PUBLISH RECORD OF WEBB COUNTY, TEXAS.
 - THE HOMEOWNERS ASSOCIATION (HOA) WILL MAINTAIN UNSERVABLE LOTS.
 - THE HOMEOWNERS ASSOCIATION (HOA) WILL MAINTAIN ISLANDS ON CUL-DE-SACS.
 - THE HOMEOWNERS ASSOCIATION (HOA) WILL MAINTAIN THE NO PARKING, ONE-WAY, AND RED CURB IMPROVEMENTS IN ALL THE CUL-DE-SACS PROPOSED MEDIANS.
 - FOR ADDITIONAL LIGHT DISTANCE EASEMENT ALONG SUNNY DAY LANE, LIMITED CONSTRUCTION AND LANDSCAPING ZONE, STRUCTURES SHALL NOT EXCEED 3.5 FEET IN HEIGHT AND LANDSCAPING IN THIS AREA SHALL BE LIMITED TO SHRUBS OR PLANTS THAT DO NOT EXCEED 3.5 FEET IN HEIGHT, MEASURED FROM THE CENTERLINE OR ADJACENT ROADWAY, AS PER LAND DEVELOPMENT CODE 24.81.10(b).
 - AREA "A" = 284.66 SF
AREA "B" = 1,185.53 SF



FINAL PLAT
THE COVES AT WINFIELD
 PHASE 7C

A PROFESSIONAL LAND SURVEYOR HAS REVIEWED THIS PLAT AND HAS DETERMINED THAT IT COMPLIES WITH THE LAREDO LAND DEVELOPMENT CODE, CHAPTER 24, SECTION 24.09. THE CITY OF LAREDO, WEBB COUNTY, TEXAS.



FINAL PLAT

REVISIONS:

NO.	DATE	DESCRIPTION
1	02-15-2008	1" = 100'
2	02-15-2008	1" = 100'
3	02-15-2008	1" = 100'
4	02-15-2008	1" = 100'
5	02-15-2008	1" = 100'
6	02-15-2008	1" = 100'
7	02-15-2008	1" = 100'
8	02-15-2008	1" = 100'
9	02-15-2008	1" = 100'
10	02-15-2008	1" = 100'
11	02-15-2008	1" = 100'
12	02-15-2008	1" = 100'
13	02-15-2008	1" = 100'
14	02-15-2008	1" = 100'
15	02-15-2008	1" = 100'
16	02-15-2008	1" = 100'
17	02-15-2008	1" = 100'
18	02-15-2008	1" = 100'
19	02-15-2008	1" = 100'
20	02-15-2008	1" = 100'
21	02-15-2008	1" = 100'
22	02-15-2008	1" = 100'
23	02-15-2008	1" = 100'
24	02-15-2008	1" = 100'
25	02-15-2008	1" = 100'
26	02-15-2008	1" = 100'
27	02-15-2008	1" = 100'
28	02-15-2008	1" = 100'
29	02-15-2008	1" = 100'
30	02-15-2008	1" = 100'
31	02-15-2008	1" = 100'
32	02-15-2008	1" = 100'
33	02-15-2008	1" = 100'
34	02-15-2008	1" = 100'
35	02-15-2008	1" = 100'
36	02-15-2008	1" = 100'
37	02-15-2008	1" = 100'
38	02-15-2008	1" = 100'
39	02-15-2008	1" = 100'
40	02-15-2008	1" = 100'
41	02-15-2008	1" = 100'
42	02-15-2008	1" = 100'
43	02-15-2008	1" = 100'
44	02-15-2008	1" = 100'
45	02-15-2008	1" = 100'
46	02-15-2008	1" = 100'
47	02-15-2008	1" = 100'
48	02-15-2008	1" = 100'
49	02-15-2008	1" = 100'
50	02-15-2008	1" = 100'
51	02-15-2008	1" = 100'
52	02-15-2008	1" = 100'
53	02-15-2008	1" = 100'
54	02-15-2008	1" = 100'
55	02-15-2008	1" = 100'
56	02-15-2008	1" = 100'
57	02-15-2008	1" = 100'
58	02-15-2008	1" = 100'
59	02-15-2008	1" = 100'
60	02-15-2008	1" = 100'
61	02-15-2008	1" = 100'
62	02-15-2008	1" = 100'
63	02-15-2008	1" = 100'
64	02-15-2008	1" = 100'
65	02-15-2008	1" = 100'
66	02-15-2008	1" = 100'
67	02-15-2008	1" = 100'
68	02-15-2008	1" = 100'
69	02-15-2008	1" = 100'
70	02-15-2008	1" = 100'
71	02-15-2008	1" = 100'
72	02-15-2008	1" = 100'
73	02-15-2008	1" = 100'
74	02-15-2008	1" = 100'
75	02-15-2008	1" = 100'
76	02-15-2008	1" = 100'
77	02-15-2008	1" = 100'
78	02-15-2008	1" = 100'
79	02-15-2008	1" = 100'
80	02-15-2008	1" = 100'
81	02-15-2008	1" = 100'
82	02-15-2008	1" = 100'
83	02-15-2008	1" = 100'
84	02-15-2008	1" = 100'
85	02-15-2008	1" = 100'
86	02-15-2008	1" = 100'
87	02-15-2008	1" = 100'
88	02-15-2008	1" = 100'
89	02-15-2008	1" = 100'
90	02-15-2008	1" = 100'
91	02-15-2008	1" = 100'
92	02-15-2008	1" = 100'
93	02-15-2008	1" = 100'
94	02-15-2008	1" = 100'
95	02-15-2008	1" = 100'
96	02-15-2008	1" = 100'
97	02-15-2008	1" = 100'
98	02-15-2008	1" = 100'
99	02-15-2008	1" = 100'
100	02-15-2008	1" = 100'

CURVE TABLE						
CURVE #	LENGTH	RADIUS	DELTA	TANGENT	CHORD DIRECTION	CHORD LENGTH
C1	18.45	134.50	75132	9.24	N 52°17'44" E	18.43
C2	113.17	930.00	124232	56.82	S 57°38'37" W	112.94
C3	242.27	420.00	323932	124.54	S 57°37'07" W	238.93
C4	483.27	210.00	627132	249.07	S 57°35'25" W	487.39
C5	398.27	420.00	427042	191.41	S 54°27'07" W	391.34
C6	110.27	290.00	214713	55.81	S 82°52'54" W	109.81
C7	40.41	430.00	572307	20.22	N 79°32'48" W	40.39
C8	9.70	146.00	374952	4.85	N 28°08'11" W	9.69
C9	19.09	200.00	572804	9.55	N 28°57'57" W	19.08
C10	204.31	175.00	674933	102.28	N 70°39'59" W	204.19
C11	32.16	930.00	373649	16.09	N 01°49'43" E	32.16
C12	194.32	1484.97	673627	97.27	S 70°09'53" E	194.21
C13	184.81	180.00	323646	48.52	N 52°48'11" W	182.75
C14	18.24	270.00	167809	9.12	N 01°09'01" W	17.98
C15	28.71	32.00	827819	14.36	S 82°02'34" W	28.31
C16	120.87	440.00	1542249	60.72	N 36°03'23" E	120.30
C17	34.36	440.00	472828	17.19	N 30°28'13" E	34.35
C18	30.52	200.00	872839	15.13	N 11°02'48" W	30.47
C19	60.35	225.00	1572201	30.36	N 62°7'30" W	60.15
C20	37.66	215.00	1070299	18.88	N 69°36'59" W	37.61
C21	70.77	215.00	1857388	35.71	N 50°49'06" W	70.45
C22	68.87	215.00	1819127	34.44	N 52°08'11" W	68.62
C23	37.56	20.00	7875737	18.68	N 62°30'54" W	37.43
C24	19.11	325.00	2705071	9.55	S 72°02'15" W	19.11
C25	65.44	325.00	7088131	32.76	S 83°38'41" W	65.40
C26	65.05	325.00	7059167	32.57	N 89°13'00" W	65.01
C27	65.67	325.00	7100007	32.88	N 82°00'00" W	65.63
C28	67.39	325.00	7211187	33.74	N 74°42'38" W	67.30
C29	49.53	325.00	5742207	24.78	N 69°28'39" W	49.51
C30	48.39	325.00	5716377	24.19	N 67°08'10" W	48.34
C31	30.77	325.00	5702297	15.41	N 57°41'38" W	30.73
C32	65.44	325.00	7708127	32.76	N 51°21'08" W	65.40
C33	49.90	325.00	5726444	24.97	N 49°02'30" W	49.88
C34	37.64	300.00	15959137	18.91	N 57°42'52" W	37.55
C35	17.98	100.00	10148144	8.92	N 59°52'08" W	17.96
C36	40.38	60.00	3813938	20.09	N 59°17'09" W	39.82
C37	43.03	60.00	4195212	22.48	N 51°27'39" W	42.11
C38	38.84	60.00	3819224	19.68	N 22°14'39" E	37.40
C39	20.09	60.00	1911717	10.14	N 50°00'00" E	20.00
C40	39.54	60.00	3749399	20.52	N 39°28'01" E	38.83
C41	39.85	60.00	3870238	20.69	S 83°73'02" E	39.13
C42	59.18	60.00	9670990	32.20	S 16°19'53" E	58.81
C43	4.75	60.00	4731537	2.37	S 08°00'23" W	4.74
C44	48.83	60.00	4443115	24.68	S 18°31'11" E	48.60
C45	43.07	475.00	5711447	21.55	S 47°01'54" E	43.06
C46	88.11	475.00	1022144	43.17	S 54°49'22" E	85.99
C47	78.54	475.00	9728244	39.36	S 64°45'12" E	76.45
C48	77.79	475.00	9722911	38.86	S 74°10'59" E	77.71
C49	77.69	475.00	9723071	38.99	S 83°33'57" E	77.71
C50	77.76	475.00	9722467	38.96	N 87°03'09" E	77.67
C51	38.13	475.00	4712729	18.07	N 80°11'02" E	38.12
C52	27.99	20.00	7875737	14.48	N 38°31'29" E	28.43
C53	43.10	215.00	1120808	21.62	N 04°47'19" E	43.00
C54	126.32	175.00	4121120	66.00	N 10°08'53" W	123.59
C55	109.52	175.00	3875129	56.82	N 48°45'29" W	107.74
C56	81.79	175.00	2674841	41.68	N 80°04'20" W	81.60
C57	117.71	200.00	3718198	58.87	S 87°52'17" W	117.30
C58	43.93	205.00	1773514	21.71	N 67°23'07" E	43.68
C59	33.80	205.00	1570710	17.00	N 65°00'00" W	33.64
C60	57.79	205.00	1970903	29.09	N 49°29'32" W	57.60
C61	55.51	205.00	1970858	27.93	N 50°39'32" W	55.35
C62	29.83	20.00	8527222	14.87	N 67°37'44" W	29.74
C63	29.83	20.00	8527237	14.87	S 16°49'45" W	29.74
C64	142.40	155.00	6238814	76.87	S 52°13'10" E	137.44
C65	40.38	155.00	1475929	20.30	S 88°00'01" E	40.28
C66	45.48	225.00	1178337	23.84	S 78°32'02" E	45.38
C67	44.00	225.00	1178398	22.10	S 80°11'33" E	43.98
C68	49.52	225.00	1970929	29.94	S 92°00'17" E	49.30
C69	59.30	225.00	1970959	29.82	S 90°23'59" E	59.12

CURVE TABLE						
CURVE #	LENGTH	RADIUS	DELTA	TANGENT	CHORD DIRECTION	CHORD LENGTH
C71	51.37	225.00	170449	25.80	S 22°47'11" E	51.25
C72	27.72	20.00	792458	13.81	S 55°57'16" E	25.56
C73	76.07	175.00	2474217	38.05	N 71°50'59" E	74.47
C74	154.10	175.00	5072707	76.05	N 84°12'07" E	148.17
C75	111.19	175.00	3627473	57.54	N 69°13'20" W	109.33
C76	90.23	175.00	1829411	45.29	N 36°38'47" W	90.08
C77	14.89	175.00	475844	7.48	N 46°18'59" W	14.86
C78	63.59	250.00	1413009	31.82	N 41°29'18" W	63.32
C79	95.77	60.00	9172703	61.54	N 79°56'27" W	85.92
C80	90.44	70.00	7874002	54.36	N 87°50'01" W	88.87
C81	48.87	70.00	4070003	25.48	N 30°00'00" W	47.88
C82	37.01	70.00	3971723	18.99	N 08°39'41" E	36.98
C83	47.47	70.00	3875104	24.09	N 39°42'07" E	46.69
C84	21.16	70.00	1771910	10.66	N 67°48'00" E	21.08
C85	29.36	145.00	1179000	14.73	N 60°10'42" E	29.31
C86	40.99	145.00	1811474	20.83	S 88°50'22" E	40.80
C87	37.83	145.00	1415202	18.92	N 68°18'00" E	37.52
C88	83.04	145.00	3274842	42.69	S 44°28'00" E	81.91
C89	34.85	200.00	9759137	17.37	S 34°39'42" E	34.61
C90	31.90	200.00	9708187	15.98	S 44°11'42" E	31.88
C91	4.89	225.00	1719327	2.42	S 49°09'00" E	4.88
C92	31.10	225.00	7756107	15.57	S 43°34'20" E	31.08
C93	42.75	225.00	1873007	21.44	S 34°10'10" E	42.68
C94	98.83	225.00	2970000	50.23	N 16°08'00" W	98.64
C95	64.35	225.00	1872310	32.40	N 04°37'58" E	64.13
C96	49.91	225.00	1274238	25.08	N 19°10'59" E	49.81
C97	48.09	225.00	1271447	24.14	N 31°39'32" E	48.00
C98	61.74	225.00	1874317	31.08	N 40°38'42" E	61.54
C99	63.52	225.00	1871072	31.97	N 61°39'31" E	63.37
C100	52.96	225.00	1779928	26.94	S 77°03'07" E	52.48
C101	27.12	20.00	7874748	13.61	N 44°37'48" E	25.66
C102	22.03	20.00	5738521	11.02	N 07°43'59" E	22.02
C103	138.28	185.00	4870107	73.49	N 13°28'48" W	134.27
C104	34.06	420.00	4739307	17.04	S 53°54'58" W	34.00
C105	20.18	420.00	2743113	10.09	S 57°34'17" W	20.18
C106	188.02	420.00	2922110	95.99	S 71°38'28" W	188.53
C107	150.30	550.00	1579229	75.62	S 76°72'27" W	149.83
C108	86.92	550.00	9703187	43.59	N 64°39'57" E	86.87
C109	246.14	550.00	2978907	125.17	S 48°45'07" W	244.09
C110	26.69	420.00	3738287	13.35	S 35°49'00" W	26.67
C111	96.19	420.00	1373108	48.83	S 44°20'11" W	96.86
C112	195.68	420.00	1370310	88.00	S 57°37'43" W	195.48
C113	86.84	420.00	1174910	43.47	S 70°03'57" W	86.49
C114	83.92	290.00	1873440	42.29	S 48°18'57" W	83.62
C115	40.41	420.00	5723031	20.22	N 79°32'48" W	40.39
C116	152.29	1485.00	5703717	76.17	N 62°38'48" E	152.19
C117	144.28	1485.00	4742421	72.18	N 68°21'59" E	144.23
C118	53.06	1485.00	1748157	26.53	N 71°42'57" E	53.05
C119	38.18	1485.00	2704227	20.58	N 72°59'22" E	38.18
C120	146.81	1485.00	4749282	73.40	S 81°52'00" W	146.77
C121	62.26	1485.00	2707011	31.13	S 85°29'52" W	62.26
C122	103.41	1485.00	3731231	51.82	S 88°18'07" W	103.59
C123	75.91	1485.00	2743527	37.96	N 68°38'40" W	75.90
C124	193.54	1485.00	4743527	96.88	N 84°03'53" W	193.44
C125	205.70	1715.00	4782987	103.00	N 87°20'52" E	205.63
C126	142.52	1485.00	4740449	71.30	S 78°53'24" E	142.48
C127	157.47	1715.00	5719337	78.79	S 78°42'08" E	157.41
C128	84.00	247.54	1928322	42.41	N 60°27'33" W	83.66
C129	287.49	190.00	8073953	151.32	N 29°48'07" W	285.84
C130	363.00	200.00	1073939	256.98	N 41°27'58" W	316.19
C131	212.29	180.00	6739427	105.41	N 59°49'54" W	209.17
C132	397.29	500.00	9529147	248.34	N 67°42'59" W	400.30
C133	464.61	200.00	1337000	461.02	S 17°47'12" W	366.97
C134	96.34	225.00	2473188	48.92	S 38°29'53" E	95.89
C135	166.10	120.00	7971823	99.48	S 63°53'00" E	153.19

LINE TABLE		
LINE #	LENGTH	DIRECTION
L1	121.20	S 73°00'00" E
L2	25.00	N 71°00'00" E
L3	115.81	S 89°00'00" W
L4	51.96	S 75°58'28" W
L5	288.83	N 17°00'00" E
L6	175.11	S 17°00'00" W
L7	101.91	N 28°00'00" W
L8	106.41	N 05°00'00" W
L9	43.20	N 51°40'28" W
L10	104.90	N 25°54'03" W
L11	131.70	S 78°00'18" W
L12	8.40	N 48°22'19" E
L13	86.60	S 84°20'19" W
L14	45.00	S 13°32'18" E
L15	95.02	S 32°00'00" W
L16	134.44	S 33°00'00" W
L17	155.17	S 22°41'10" W
L18	123.13	S 00°00'00" E
L19	119.31	S 00°00'00" E
L20	157.42	S 00°00'00" E
L21	143.67	S 00°00'00" E
L22	185.51	S 00°00'00" E
L23	173.23	S 15°00'00" W
L24	84.71	S 30°00'00" W
L25	135.59	S 45°00'00" W
L26	120.60	S 45°00'00" W
L27	111.51	S 37°00'00" W
L28	118.28	S 58°00'00" W
L29	177.78	N

