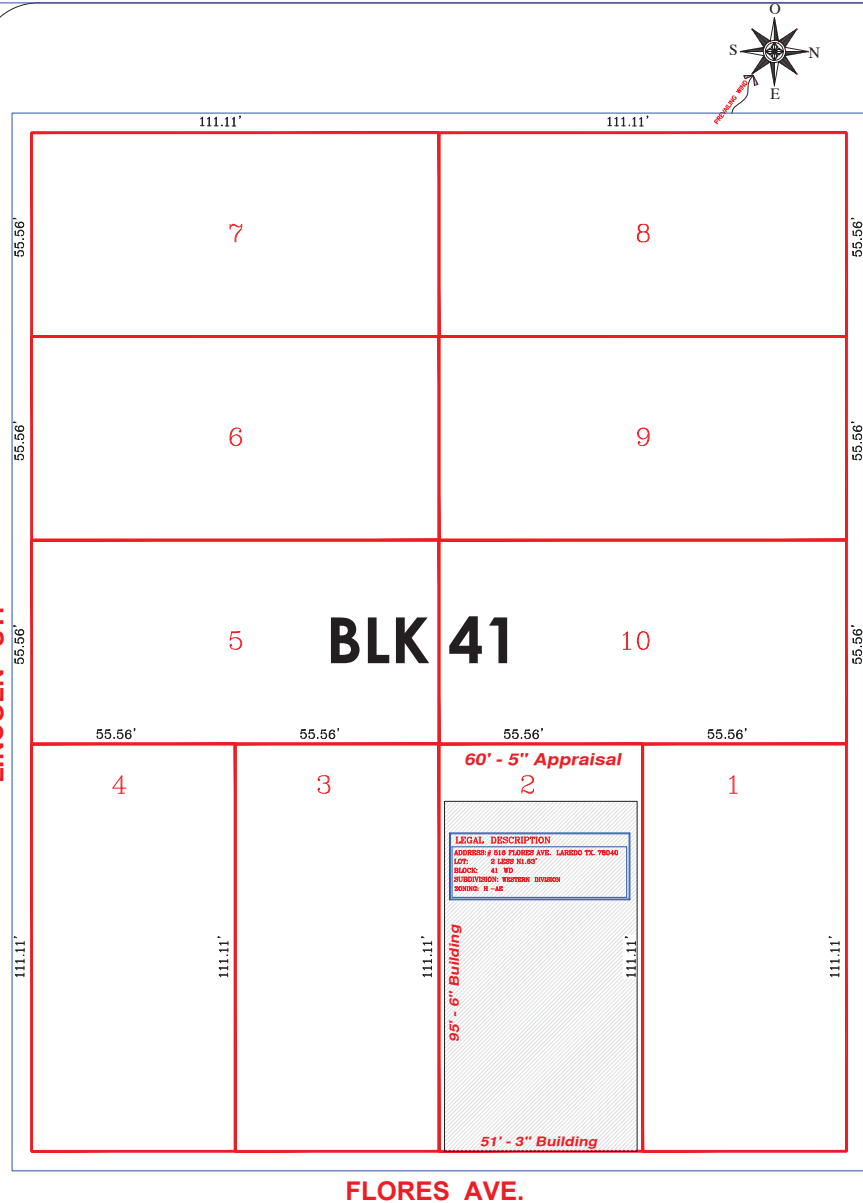


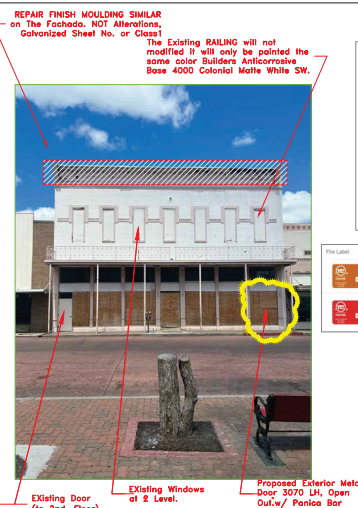
LINCOLN ST.



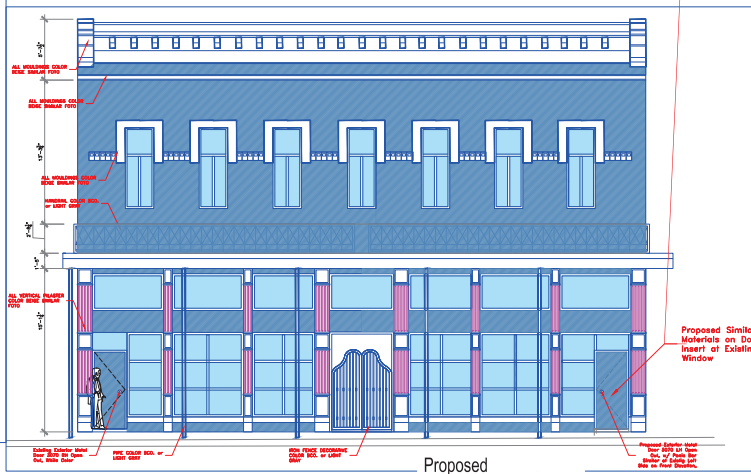
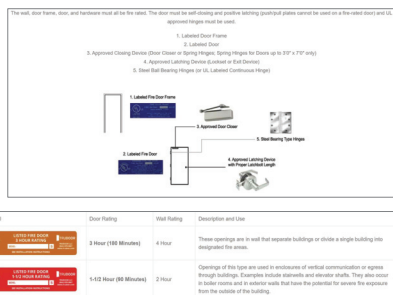
SITE PLAN

Scale: 1/16" = 1' - 0"

HIDALGO ST.



CODE DATA (Applicable Codes.)	
All Building Construction Should be in Compliance with the following:	
INTERNATIONAL BUILDING CODE (IBC) 2018 with LOCAL AMENDMENTS	
INTERNATIONAL MECHANICAL CODE (IMC) 2018 with LOCAL AMENDMENTS	
INTERNATIONAL RESIDENTIAL CODE (IRC) 2018	
INTERNATIONAL PROPERTY MAINTENANCE CODE (IPMC) 2018	
INTERNATIONAL ENERGY CONSERVATION CODE (IECC) 2018	
INTERNATIONAL EXISTING BUILDING CODE (IEBC) 2018	
(TAS) TEXAS ACCESSIBILITY STANDARDS 2012	
NATIONAL ELECTRICAL CODE (NEC) 2017	
INTERNATIONAL FIRE CODE (IFC) 2018	
INTERNATIONAL SWIMMING POOL AND SPA CODE (ISPS) 2018	
INTERNATIONAL PLUMBING CODE (IPC) 2018	
INTERNATIONAL FUEL GAS CODE (IFGC) 2018	
INTERNATIONAL PRIVATE SEWAGE DISPOSAL CODE (IPSD) 2018	



Proposed FRONT ELEVATION

Scale: N.T.S. (Not for Scale)

General Notes

THESE DRAWINGS AND SPECIFICATIONS ARE AND SHALL REMAIN THE PROPERTY OF THE ARCHITECT. NO PART OF THESE DRAWINGS OR SPECIFICATIONS SHALL BE REPRODUCED OR TRANSMITTED IN ANY FORM OR BY ANY MEANS, ELECTRONIC OR MECHANICAL, WITHOUT PRIOR APPROVAL FROM THE ARCHITECT. COPYRIGHT NOTICE: MARCH, 2025

CCECORIO Apartments, finish out - 6 Units at 2nd. Level, on 4515 Flores Ave, Laredo, TX, 78040, LOT 2 LESS N1/3; BLK 41 HD

DESIGNER : AX DESIGN & CONSTRUCTION ; OWNER: CCECORIO LLC.

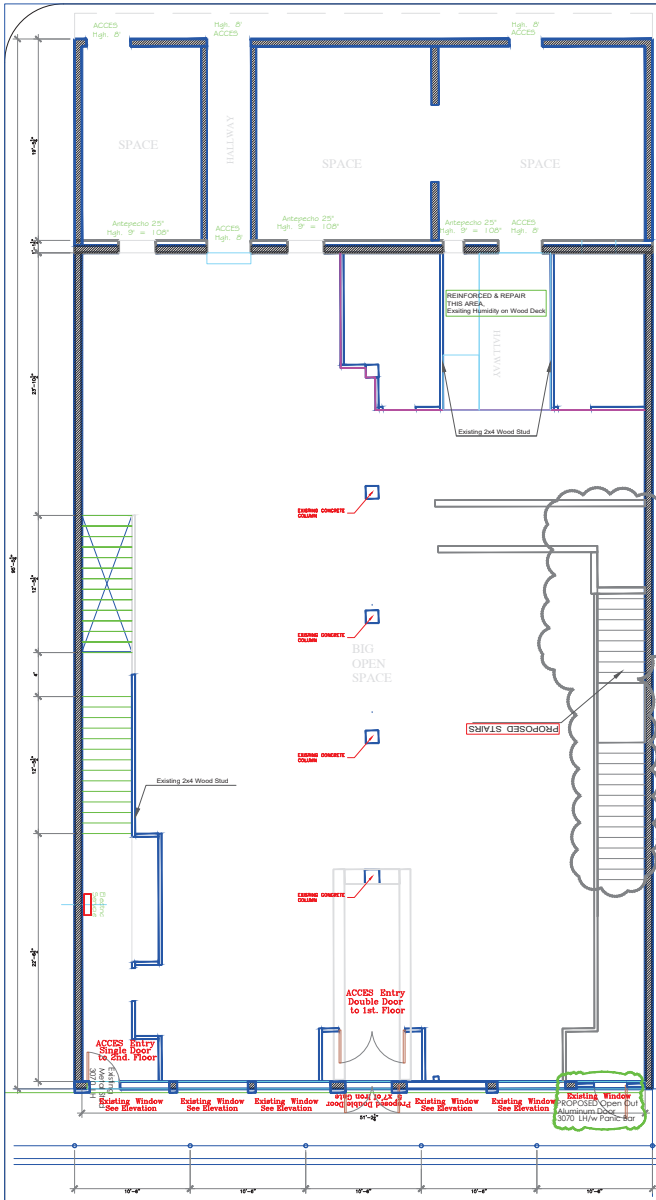
SITE & FRONT ELEVATION PLAN

No. Revision/Issue Date

Firm Name and Address
Designer: AX Design & Construction
Pedro Avila
Phone: (956) 333-3459
PO BOX 47134
Laredo, TX 78045
ax_construction@yahoo.com

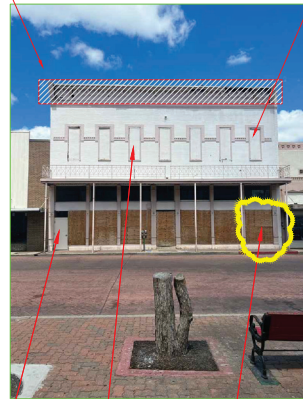
Project Name and Address
Builder: Napoleon Construction LLC
Napoleon Construction LLC
Residential & Commercial
(956) 774-8164

Project APARTMENTS
Date 04/03/2025
Scale As Noted
Sheet HDA



REPAIR FINISH MOULDING SIMILAR on The Fochoda, NOT Alterations, Galvanized Steel No. or Glass!

The Existing RAILING will not modified it will only be painted the same color Builders Anticorrosive Base 4000 Colonial Matte White SW.



Existing Door (to 2nd. Floor)

Existing Windows at 2 Level.

Proposed Exterior Metal Door 3070 LH, Open Out, w/ Panic Bar.

TRU DOOR

FLUSH HOLLOW METAL DOOR

Heavy-duty steel door for commercial, industrial and institutional applications.

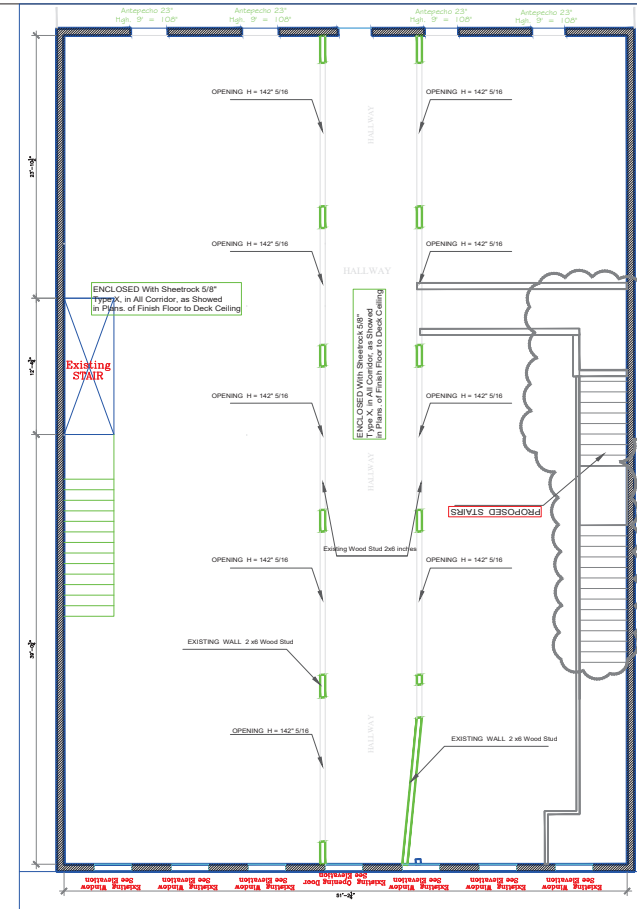
Features:

- Heavy-duty 304 and 316 grade steel frames.
- 1-1/2" Thick, reinforced design with removable large plates.
- Adjustable or non-adjustable core.
- Insulated fire and burglar resistant for additional safety and protection.
- Resistant to most common chemical vapors and corrosion.
- Heavy plate edge reinforcement and door edge reinforcement.
- Available with a wide range of glass inserts, hardware and hardware options.
- Factory applied finish available in a variety of colors.
- Flame rated up to 3 hours with 100% 100% water resistant.
- Frame includes 90° reinforcement, 8000 Reinforced Steel, 9000 Reinforced Steel.

Code Compliance:

- Meets or exceeds ANSI A103 and A103.1.
- Meets or exceeds NFPA 101 and 101.1.
- Compliant for installations requiring compliance to require fire-rated doors (UL 10C and positive pressure for fire-rated doors).
- Florida Product Approved.

Grade and Finish	Door Construction	Minimum Size	Maximum Weight
304	304	36" x 80"	1000 lbs
316	316	36" x 80"	1000 lbs



SCOPE WORK

On 8516 Flores St.

March 14, 2023

1. Approved Exterior Metal Door 3070 LH Open Out, All steel and fire-rated doors and frames.

2. MEET IN UNIFORM ALL SHIRTS MATERIALS & COLORS TO SUBMIT NEW DOOR PROVIDED ON PLACE.

3. SPEC. ON MATERIALS (See in Plans and Bids).

4. Approved Exterior Metal Door 3070 LH Open Out, All steel and fire-rated doors and frames.

5. Approved Exterior Metal Door 3070 LH Open Out, All steel and fire-rated doors and frames.

6. Approved Exterior Metal Door 3070 LH Open Out, All steel and fire-rated doors and frames.

7. Approved Exterior Metal Door 3070 LH Open Out, All steel and fire-rated doors and frames.

8. Approved Exterior Metal Door 3070 LH Open Out, All steel and fire-rated doors and frames.

9. Approved Exterior Metal Door 3070 LH Open Out, All steel and fire-rated doors and frames.

10. Approved Exterior Metal Door 3070 LH Open Out, All steel and fire-rated doors and frames.

Existing 2nd. Floor Plan

Scale: 3/16" = 1'-0"

The work, door frame, door, and hardware shall be the same. The door shall be self-closing and positive latching and shall be tested and certified to be tested every year.

1. Approved Exterior Metal Door 3070 LH Open Out, All steel and fire-rated doors and frames.

2. Approved Exterior Metal Door 3070 LH Open Out, All steel and fire-rated doors and frames.

3. Approved Exterior Metal Door 3070 LH Open Out, All steel and fire-rated doors and frames.

4. Approved Exterior Metal Door 3070 LH Open Out, All steel and fire-rated doors and frames.

5. Approved Exterior Metal Door 3070 LH Open Out, All steel and fire-rated doors and frames.

6. Approved Exterior Metal Door 3070 LH Open Out, All steel and fire-rated doors and frames.

7. Approved Exterior Metal Door 3070 LH Open Out, All steel and fire-rated doors and frames.

8. Approved Exterior Metal Door 3070 LH Open Out, All steel and fire-rated doors and frames.

9. Approved Exterior Metal Door 3070 LH Open Out, All steel and fire-rated doors and frames.

10. Approved Exterior Metal Door 3070 LH Open Out, All steel and fire-rated doors and frames.

FLOOR PLAN LEGEND

Symbol	Description
—	EXISTING EXTERIOR WALLS
—	EXISTING EXTERIOR WALLS
—	EXISTING EXTERIOR WALLS
—	EXISTING EXTERIOR WALLS
—	EXISTING EXTERIOR WALLS
—	EXISTING EXTERIOR WALLS
—	EXISTING EXTERIOR WALLS
—	EXISTING EXTERIOR WALLS
—	EXISTING EXTERIOR WALLS
—	EXISTING EXTERIOR WALLS

General Notes

THESE DRAWINGS AND SPECIFICATIONS ARE AND SHALL REMAIN THE PROPERTY OF THE ARCHITECT. THE ARCHITECT'S DESIGNER, AX DESIGN & CONSTRUCTION, LLC, MAY NOT BE HELD RESPONSIBLE FOR ANY ERRORS OR OMISSIONS WITHOUT PRIOR APPROVAL FROM AND WITH APPROPRIATE COMPENSATION TO THE ARCHITECT. COPY RIGHT DATE: MARCH, 2023.

CCECORIO VANILLA FINISH OUT, 1st. Level, on 8516 Flores Ave. Laredo Tx. 78040, LOT 2 LESS N1/4, BLK. 41WD

DESIGNER : AX DESIGN & CONSTRUCTION ; OWNER: CCECORIO LLC.

EXISTING BUILDING (2 Levels) 1st. FLOOR & 2nd FLOOR PLAN

No.	Revision/Issue	Date

Firm Name and Address

Designer: AX Design & Construction
Pedro Avila
Phone: (956) 333-3459
PO BOX 47134
Laredo Tx. 78045
ax_construction@yahoo.com

Project Name and Address

Builder: Napoleon Construction LLC
Napoleon Construction LLC
Residential & Commercial
(956) 774-8164

Project

FINISH OUT

Date

04/03/2025

Scale

As Noted

Sheet

HDB