

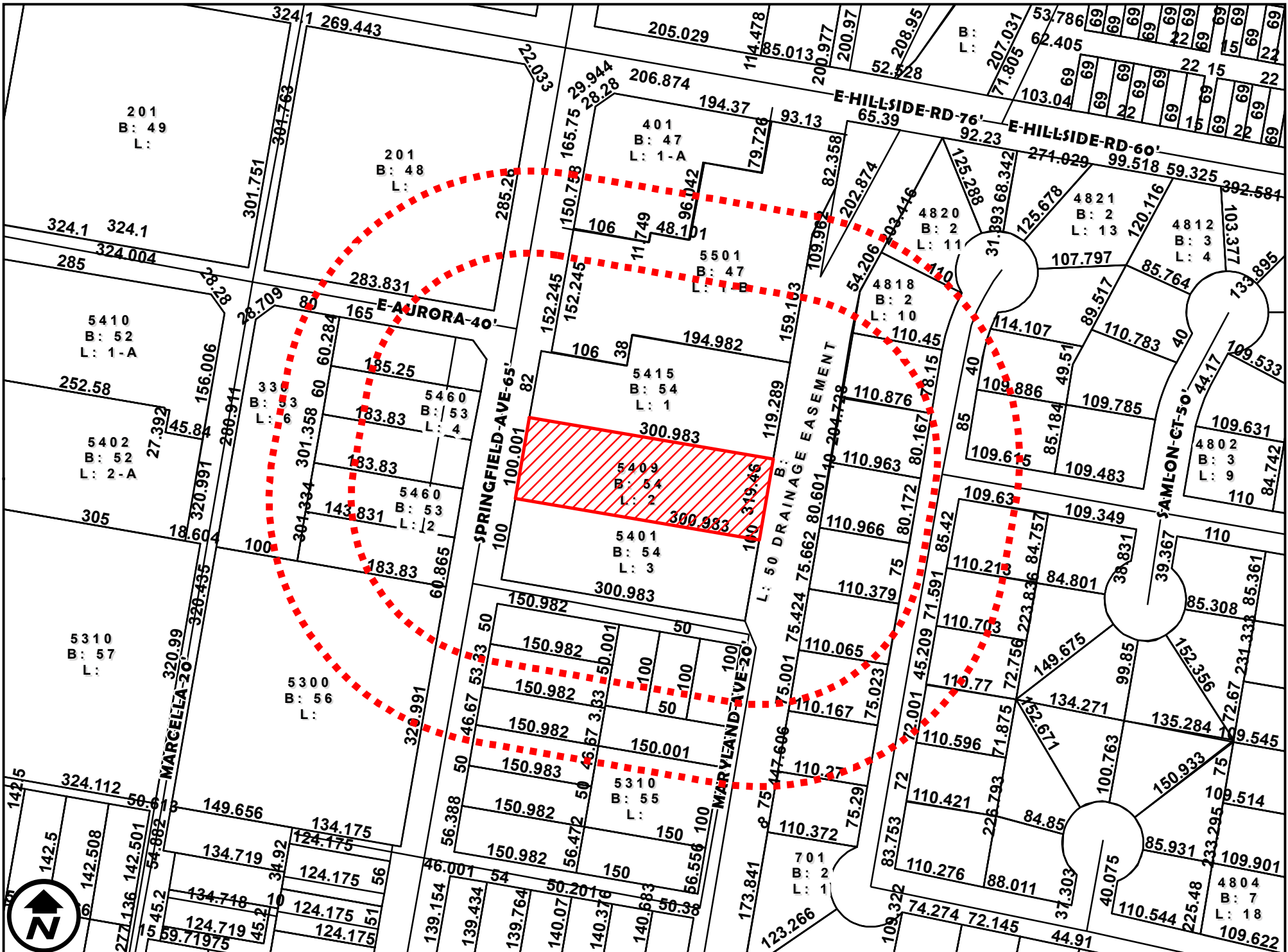


AERIAL MAP

1 inch = 150 feet

ZC-052-2025
COUNCIL DISTRICT 4
5409 SPRINGFIELD AVENUE

APPLICATION FOR
B-3 (COMMUNITY BUSINESS DISTRICT) TO
C.U.P FOR PHONE EXCHANGE/SWITCHING STATION



DIMENSIONS MAP

1 inch = 150 feet

ZC-052-2025
COUNCIL DISTRICT 4
5409 SPRINGFIELD AVENUE

APPLICATION FOR
B-3 (COMMUNITY BUSINESS DISTRICT) TO
C.U.P FOR PHONE EXCHANGE/SWITCHING STATION



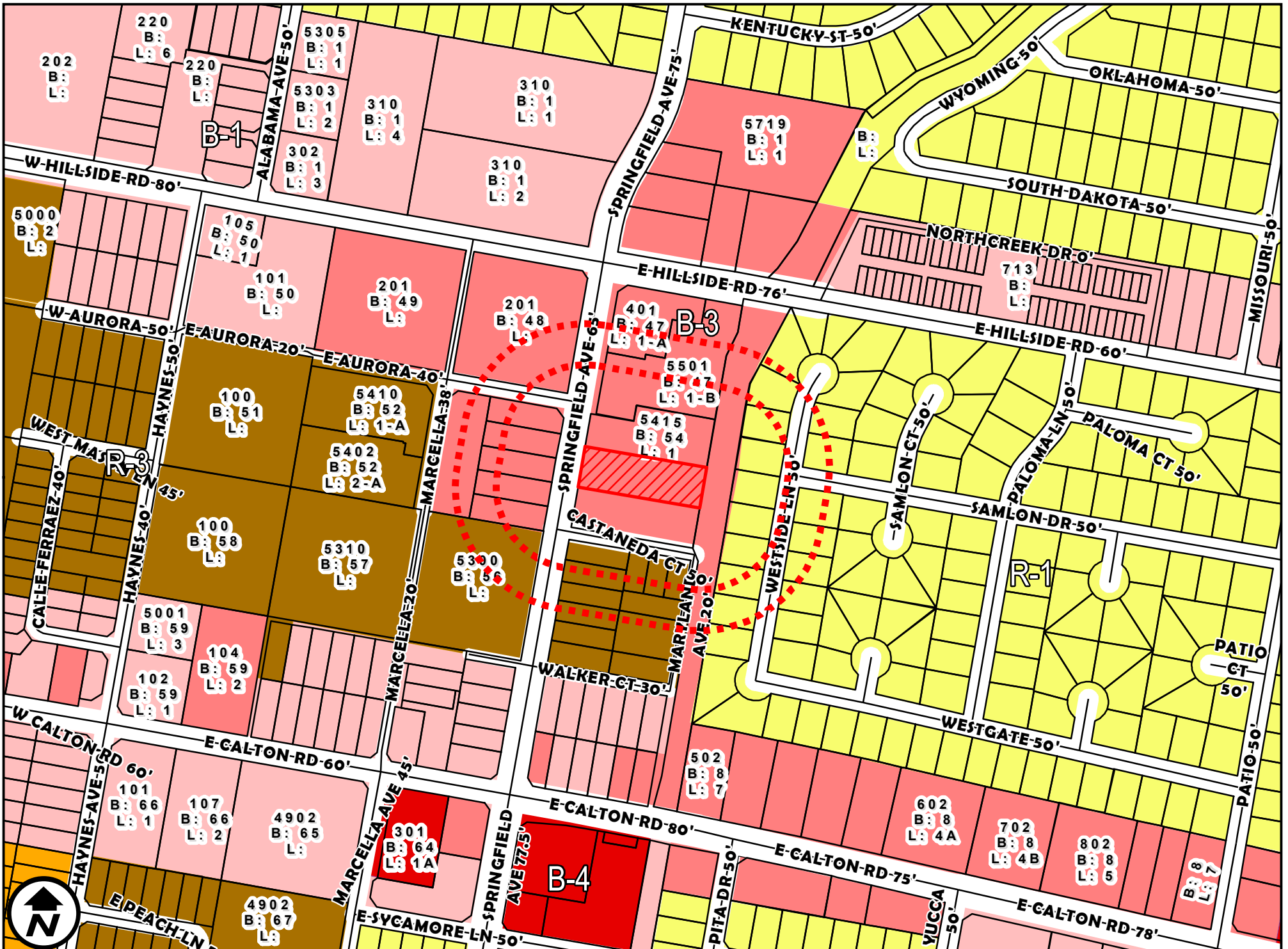
1 inch = 150 feet

ZC-052-2025

APPLICATION FOR

B-3 (COMMUNITY BUSINESS DISTRICT) TO

C.U.P FOR PHONE EXCHANGE/SWITCHING STATION



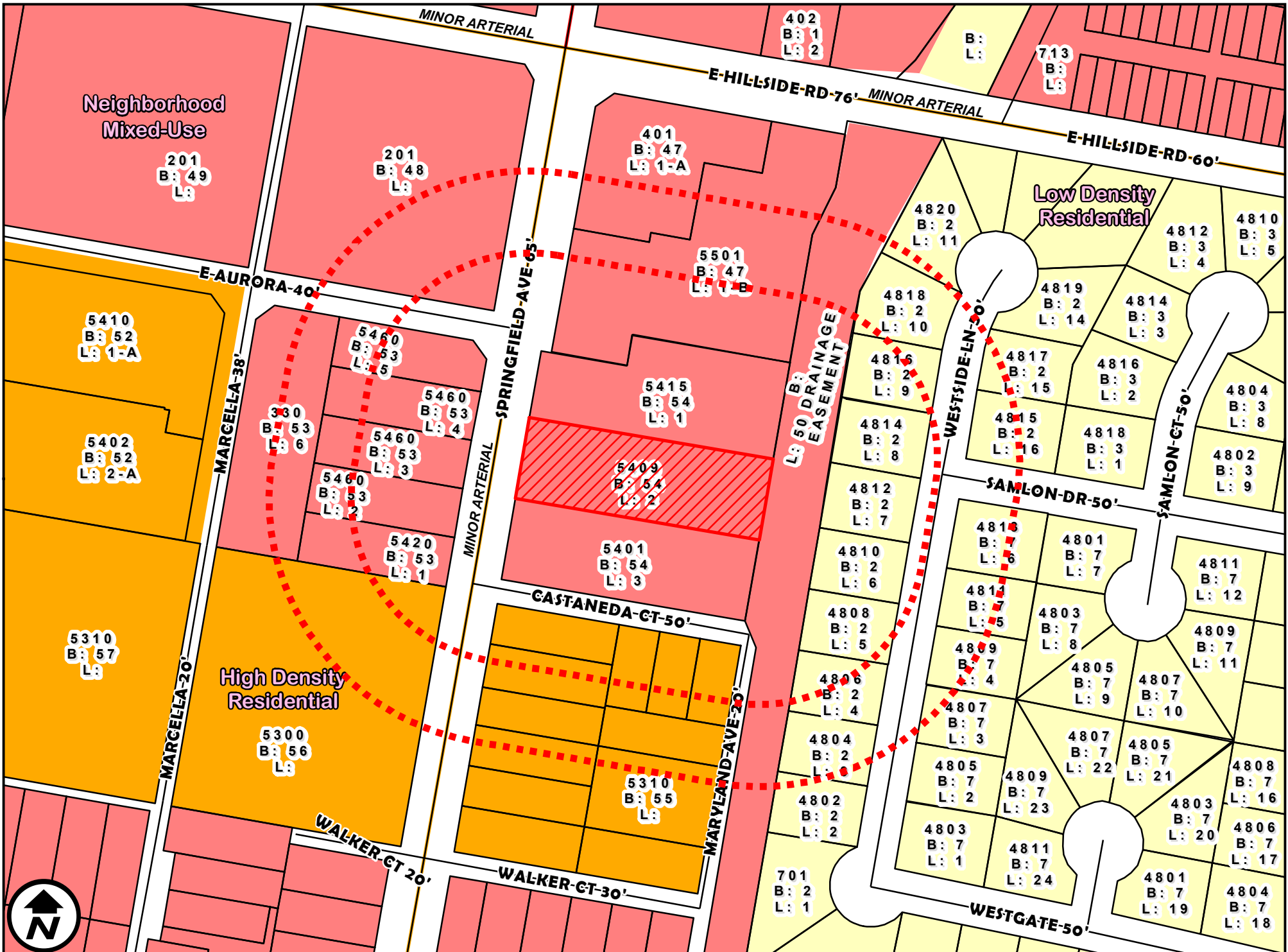
ZONING OVERVIEW

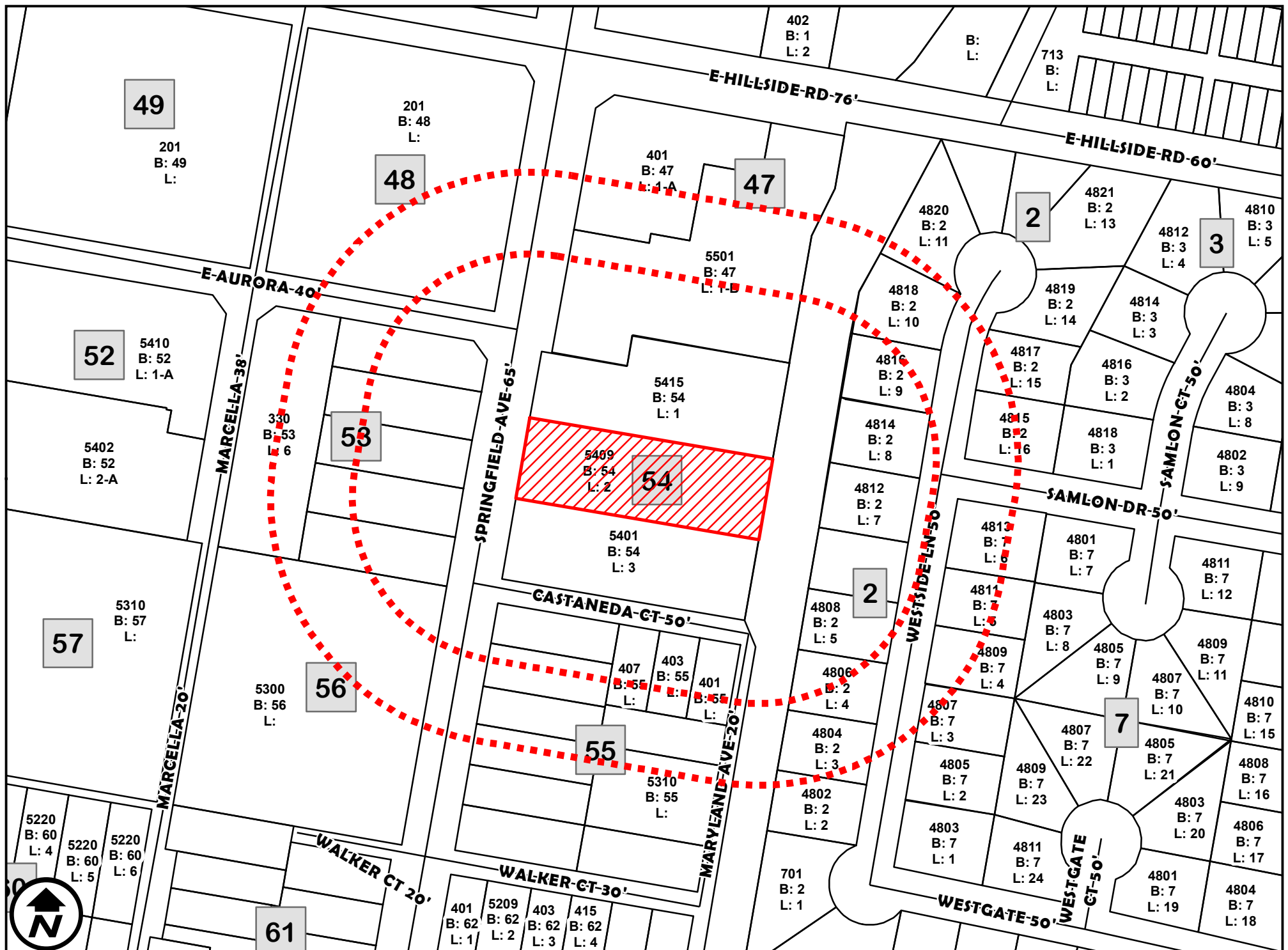
1 inch = 300 feet

ZC-052-2025

COUNCIL DISTRICT 4
5409 SPRINGFIELD AVENUE

APPLICATION FOR
B-3 (COMMUNITY BUSINESS DISTRICT) TO
C.U.P FOR PHONE EXCHANGE/SWITCHING STATION





200' AND 300' NOTIFICATION

ZC-052-2025

COUNCIL DISTRICT 4

5409 SPRINGFIELD AVENUE

1 inch = 150 feet

APPLICATION FOR

B-3 (COMMUNITY BUSINESS DISTRICT) TO
C.U.P FOR PHONE EXCHANGE/SWITCHING STATION