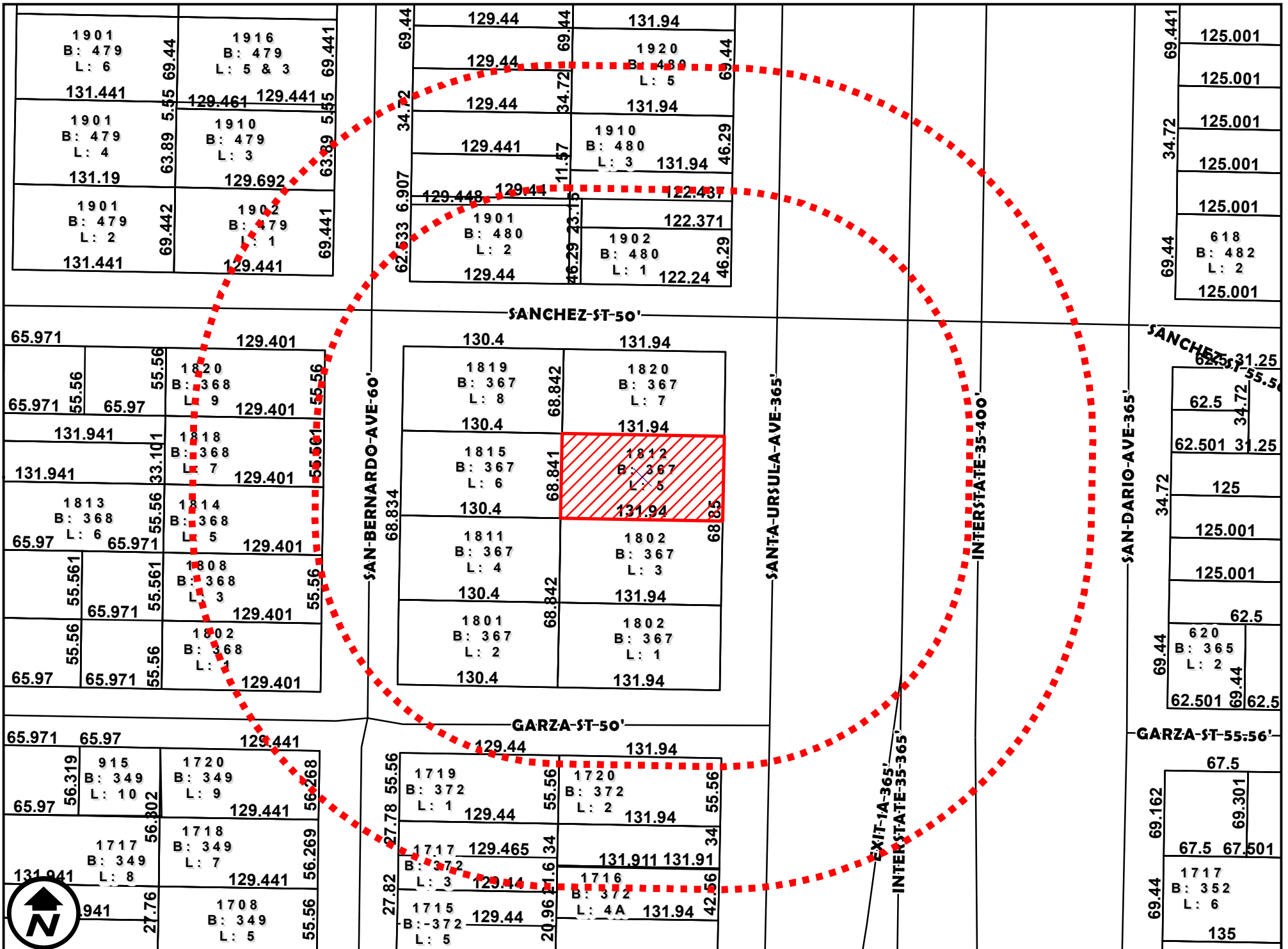


AERIAL MAP

1 inch = 100 feet

ZC-061-2026
 COUNCIL DISTRICT 8
 1812 SANTA URSULA AVENUE

APPLICATION FOR
 B-3 (COMMUNITY BUSINESS DISTRICT) TO
 B-4 (HIGHWAY COMMERCIAL DISTRICT)

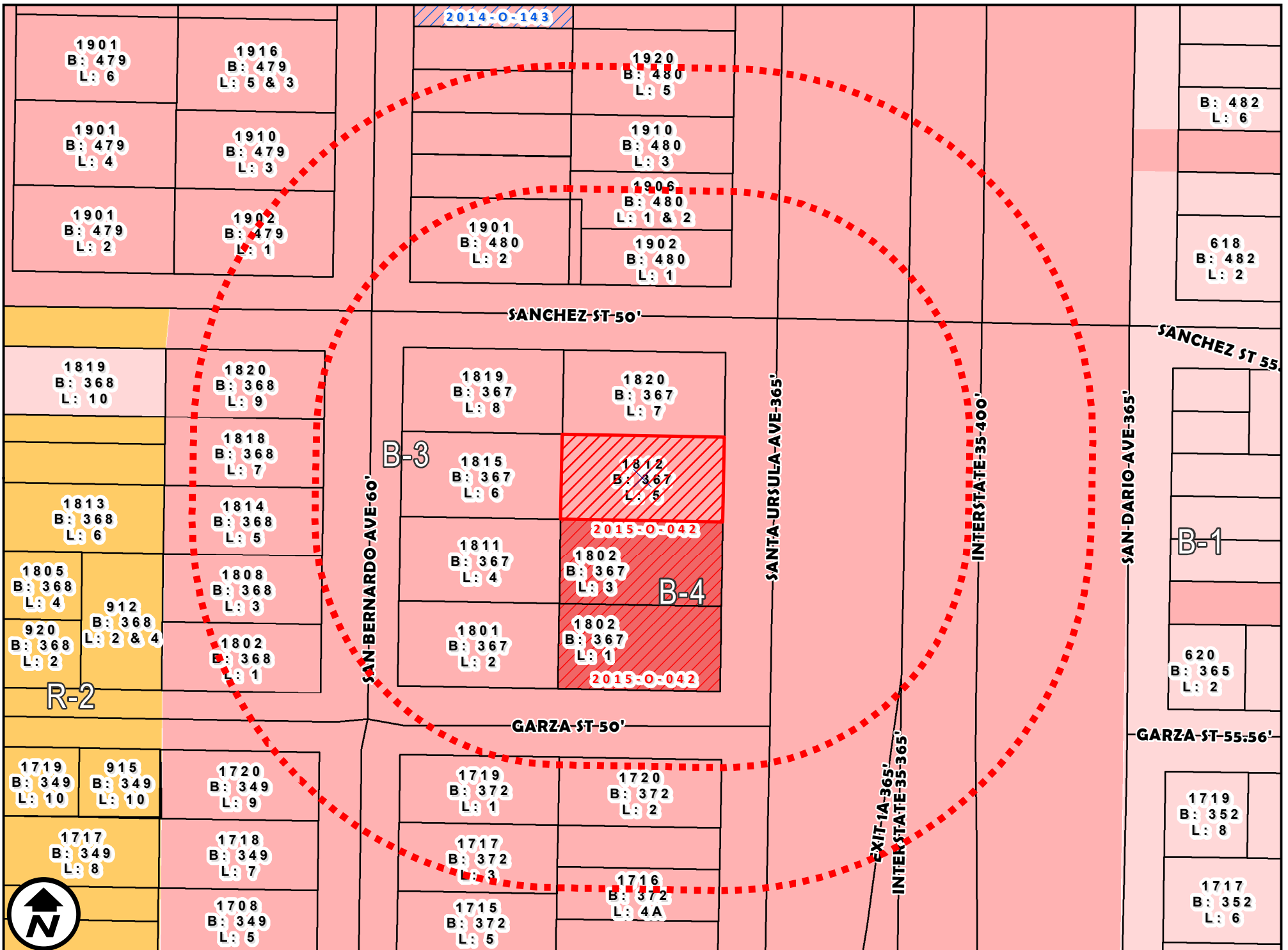


DIMENSIONS MAP

1 inch = 100 feet

ZC-061-2026
 COUNCIL DISTRICT 8
 1812 SANTA URSULA AVENUE

APPLICATION FOR
 B-3 (COMMUNITY BUSINESS DISTRICT) TO
 B-4 (HIGHWAY COMMERCIAL DISTRICT)



ZONING MAP

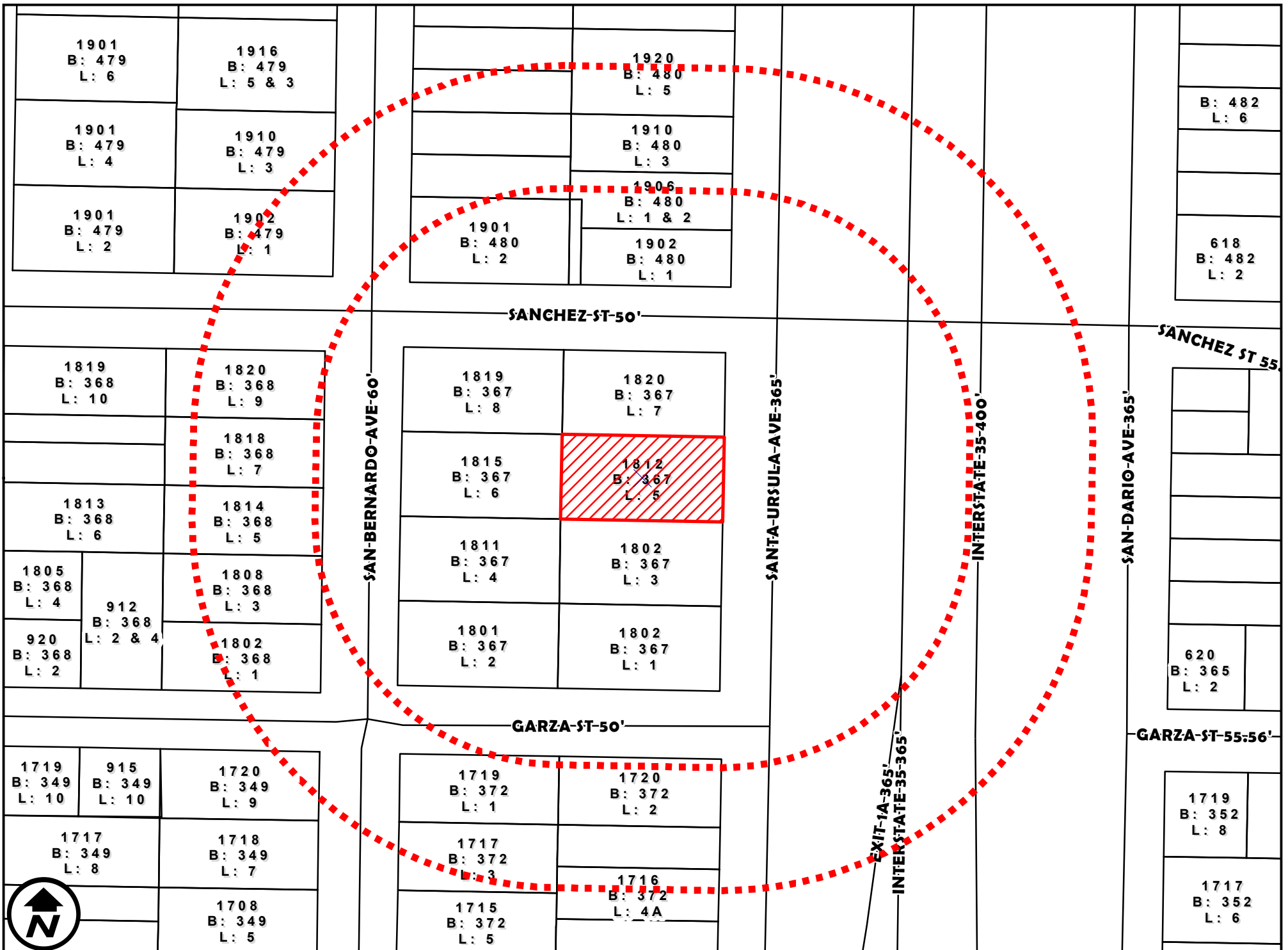
1 inch = 100 feet

ZC-061-2026

COUNCIL DISTRICT 8
1812 SANTA URSULA AVENUE

APPLICATION FOR

B-3 (COMMUNITY BUSINESS DISTRICT) TO
B-4 (HIGHWAY COMMERCIAL DISTRICT)



SURVEY MAP

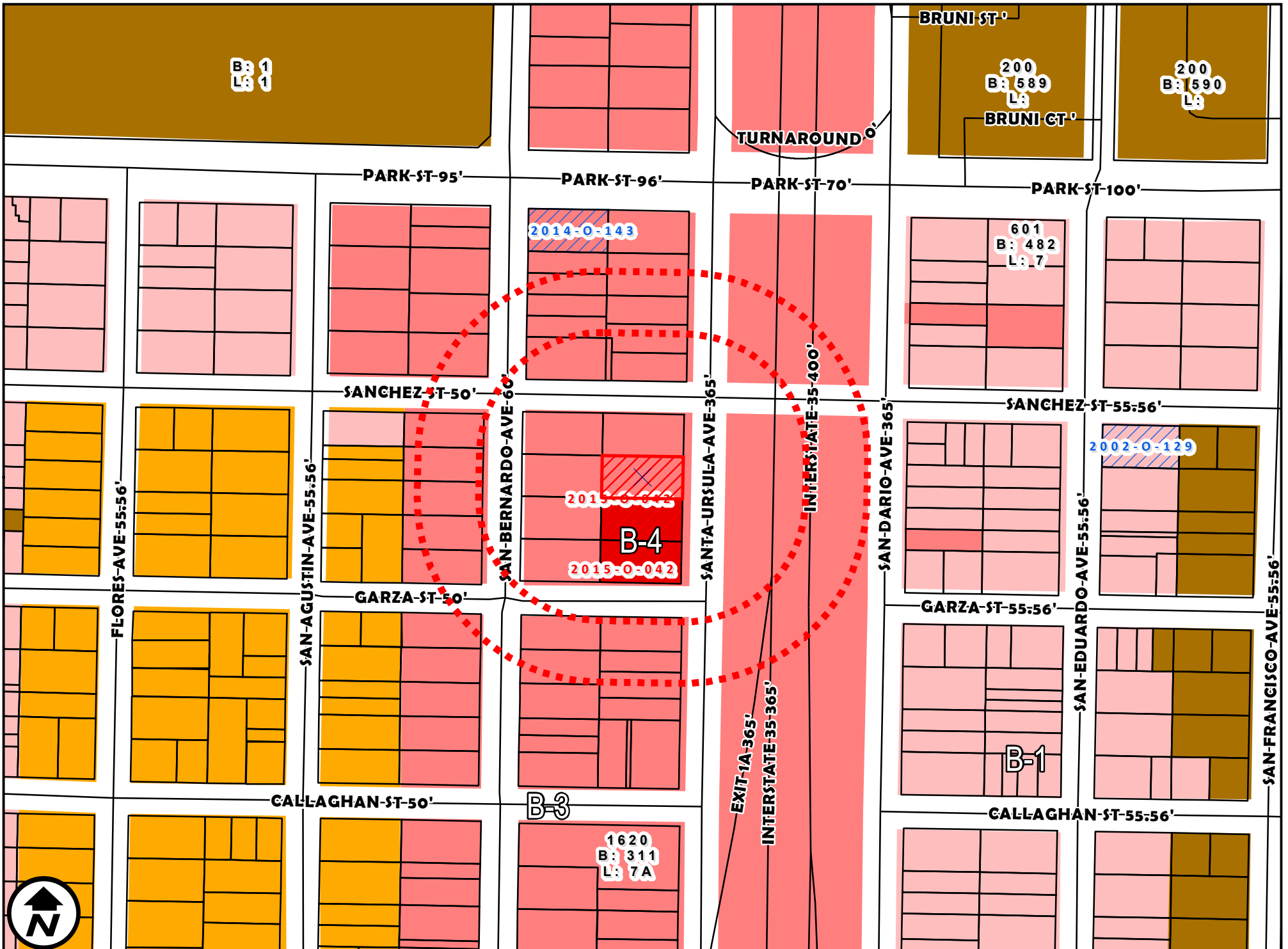
1 inch = 100 feet

ZC-061-2026

COUNCIL DISTRICT 8
1812 SANTA URSULA AVENUE

APPLICATION FOR

B-3 (COMMUNITY BUSINESS DISTRICT) TO
B-4 (HIGHWAY COMMERCIAL DISTRICT)



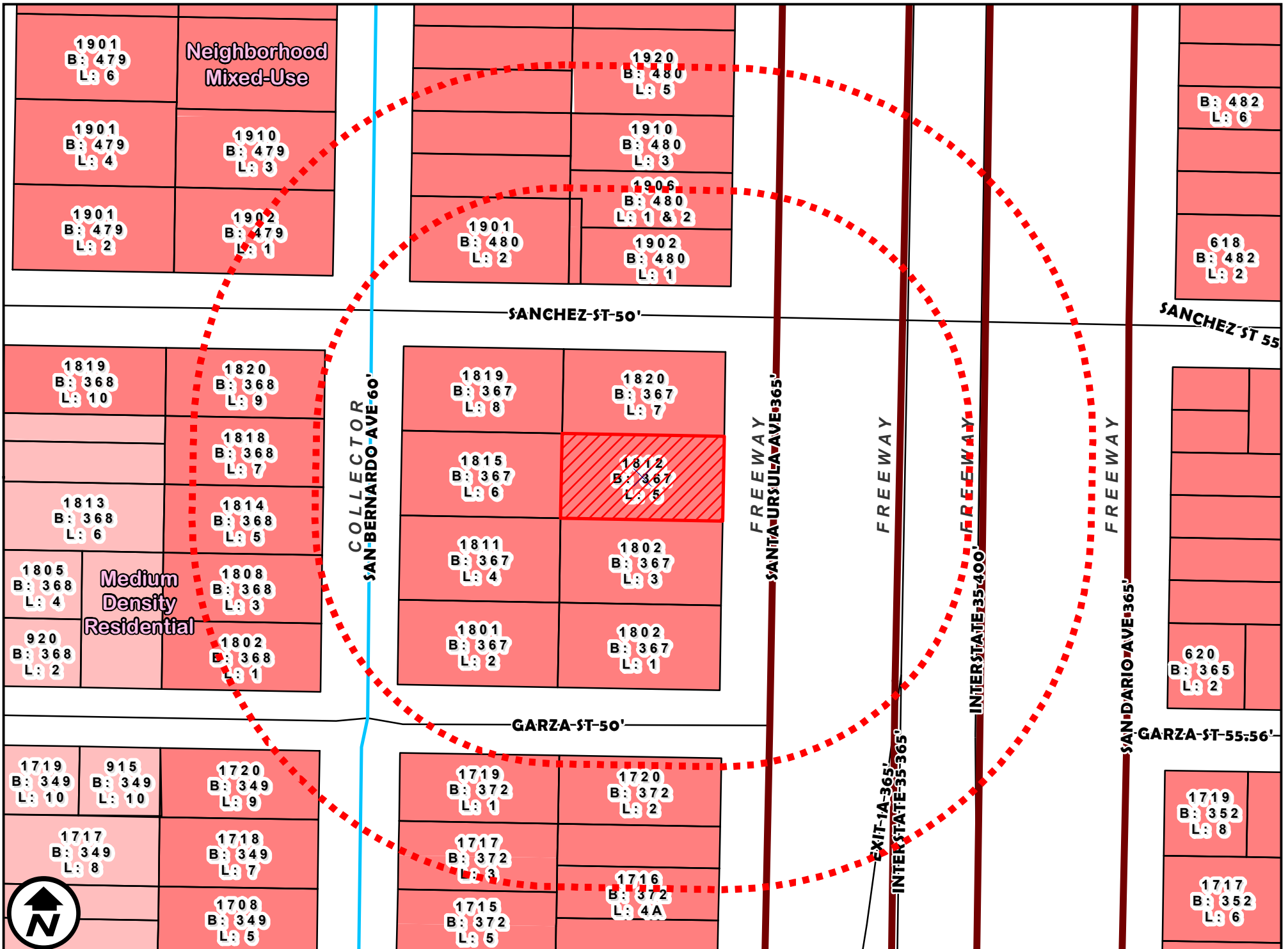
ZONING OVERVIEW

1 inch = 200 feet



ZC-061-2026
 COUNCIL DISTRICT 8
 1812 SANTA URSULA AVENUE

APPLICATION FOR
 B-3 (COMMUNITY BUSINESS DISTRICT) TO
 B-4 (HIGHWAY COMMERCIAL DISTRICT)

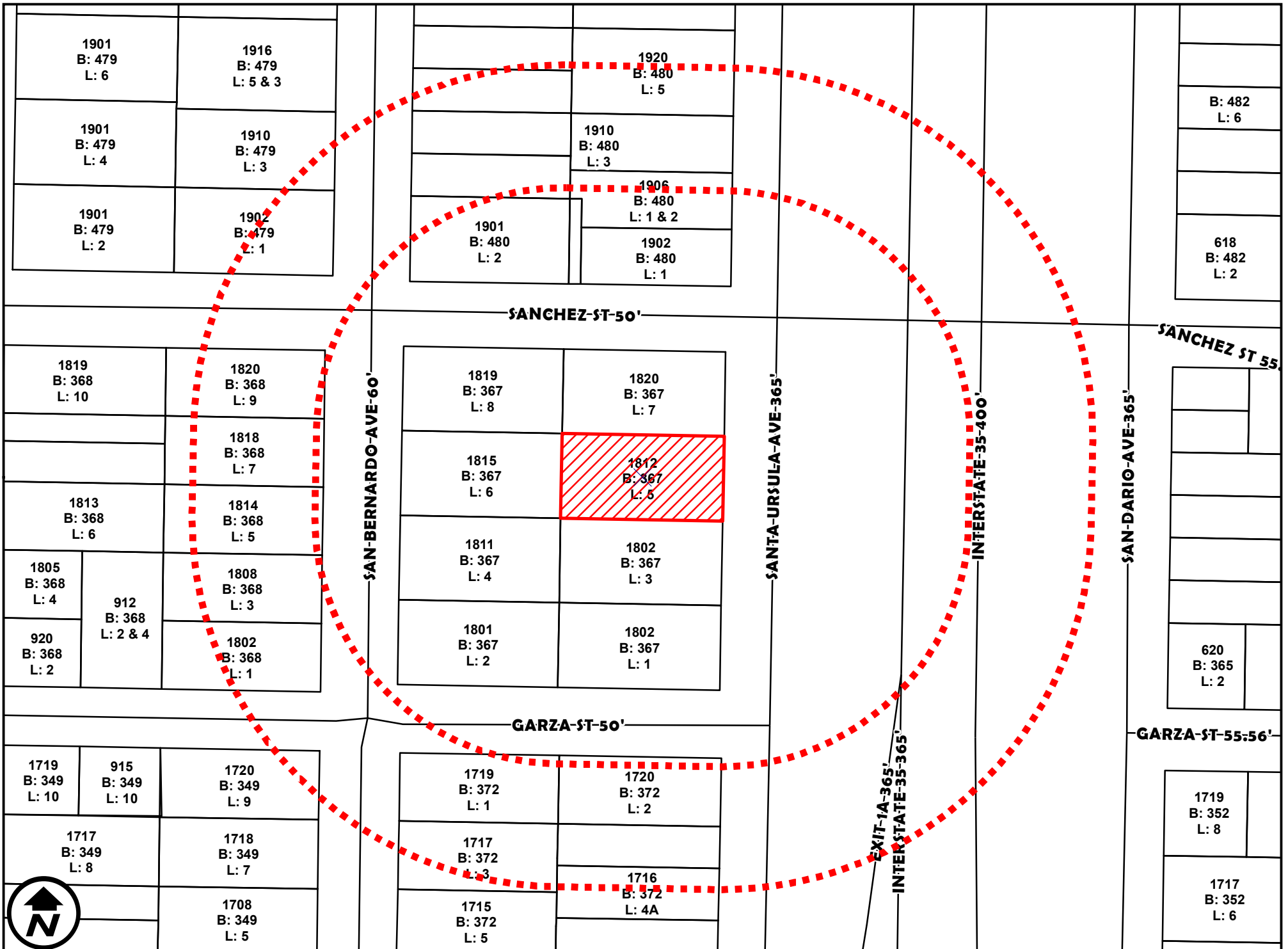


FUTURE LANDUSE

1 inch = 100 feet

ZC-061-2026
 COUNCIL DISTRICT 8
 1812 SANTA URSULA AVENUE

APPLICATION FOR
 B-3 (COMMUNITY BUSINESS DISTRICT) TO
 B-4 (HIGHWAY COMMERCIAL DISTRICT)



200' AND 300' NOTIFICATION

1 inch = 100 feet

ZC-061-2026
 COUNCIL DISTRICT 8
 1812 SANTA URSULA AVENUE

APPLICATION FOR
 B-3 (COMMUNITY BUSINESS DISTRICT) TO
 B-4 (HIGHWAY COMMERCIAL DISTRICT)