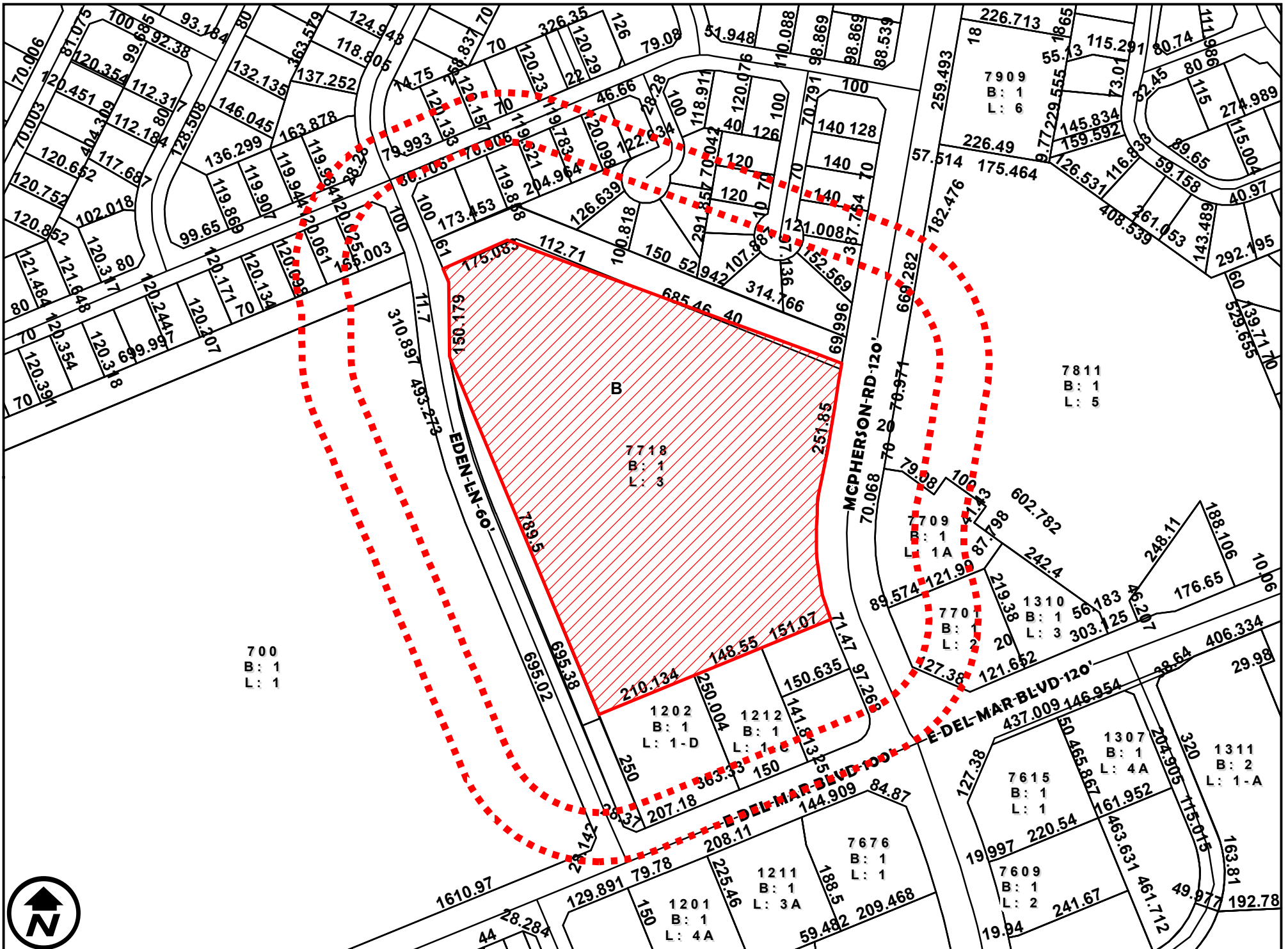


AERIAL MAP

1 inch = 250 feet

ZC-069-2025
COUNCIL DISTRICT 5
7718 MCPHERSON ROAD, SUITE 106

APPLICATION FOR
B-3 (COMMUNITY BUSINESS DISTRICT) TO
S.U.P AMENDMENT FOR RESTAURANT SERVING ALCOHOL

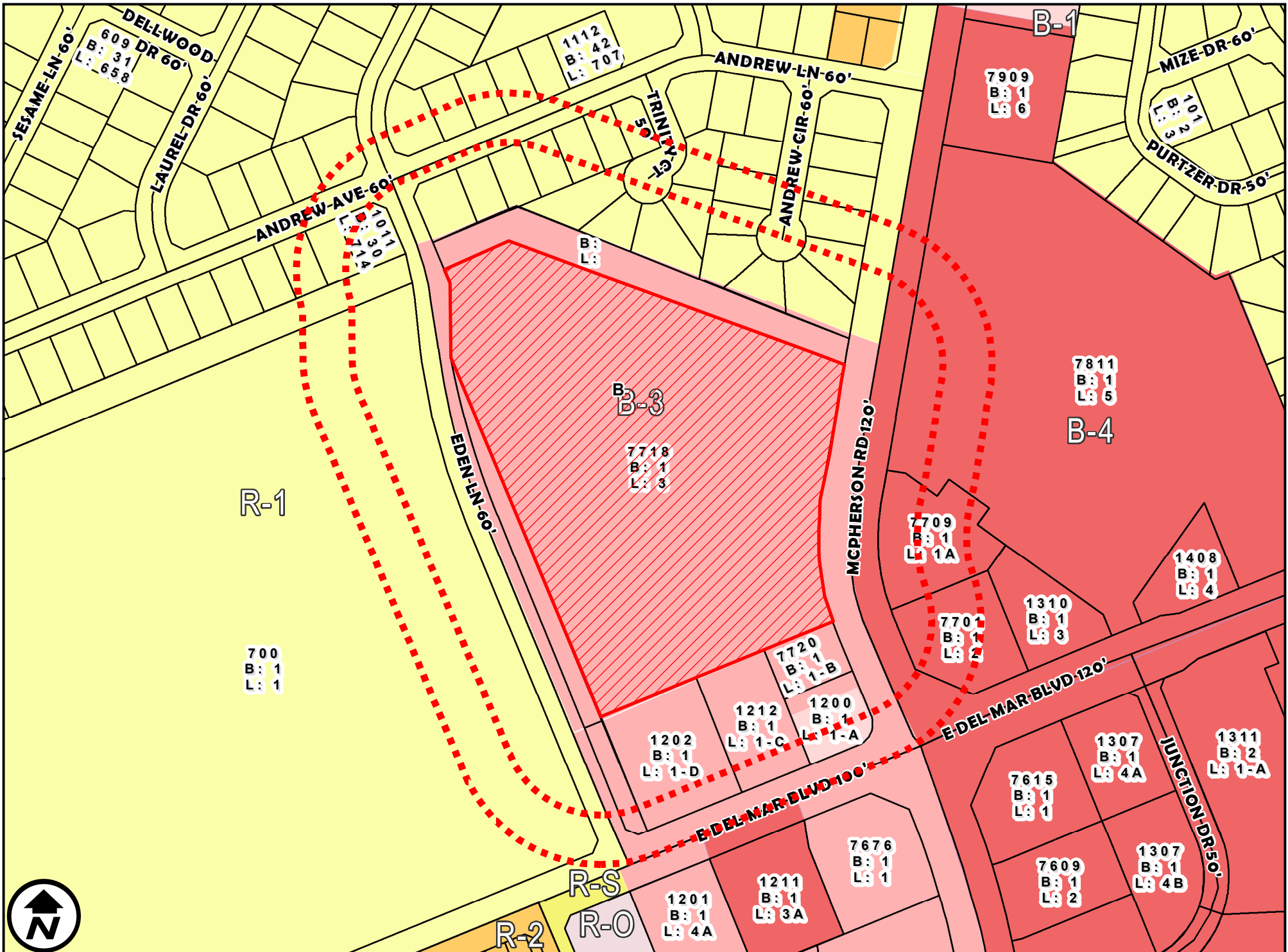


DIMENSIONS MAP

1 inch = 250 feet

ZC-069-2025
 COUNCIL DISTRICT 5
 7718 MCPHERSON ROAD, SUITE 106

APPLICATION FOR
 B-3 (COMMUNITY BUSINESS DISTRICT) TO
 S.U.P AMENDMENT FOR RESTAURANT SERVING ALCOHOL



ZONING MAP

1 inch = 250 feet

ZC-069-2025

COUNCIL DISTRICT 5

7718 MCPHERSON ROAD, SUITE 106

APPLICATION FOR

B-3 (COMMUNITY BUSINESS DISTRICT) TO

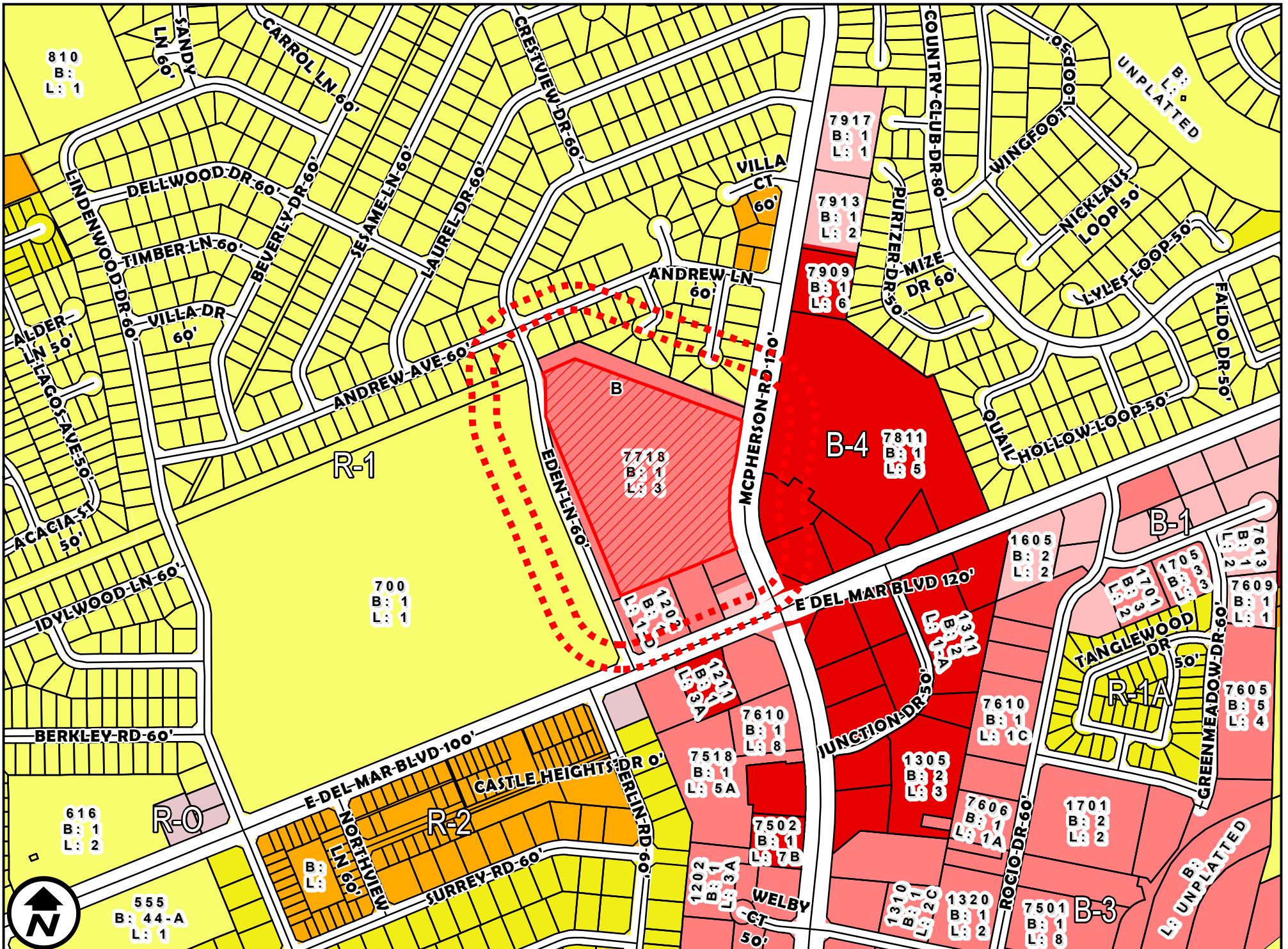
S.U.P AMENDMENT FOR RESTAURANT SERVING ALCOHOL



1 inch = 250 feet

ZC-069-2025
COUNCIL DISTRICT 5
7718 MCPHERSON ROAD, SUITE 106

**APPLICATION FOR
B-3 (COMMUNITY BUSINESS DISTRICT) TO
S.U.P AMENDMENT FOR RESTAURANT SERVING ALCOHOL**



ZONING OVERVIEW

1 inch = 500 feet

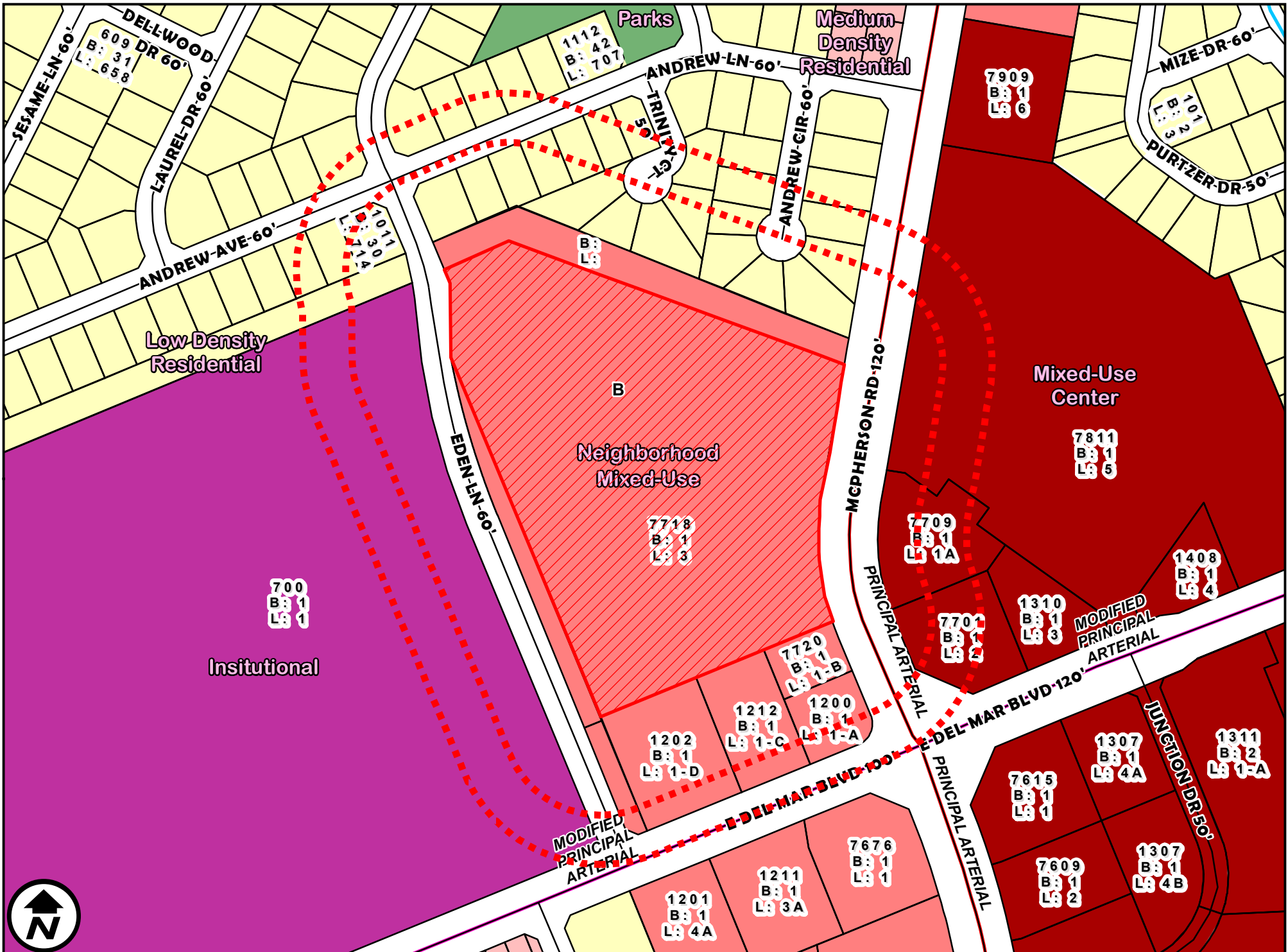
ZC-069-2025

COUNCIL DISTRICT 5

7718 MCPHERSON ROAD, SUITE 106

APPLICATION FOR

B-3 (COMMUNITY BUSINESS DISTRICT) TO
S.U.P AMENDMENT FOR RESTAURANT SERVING ALCOHOL

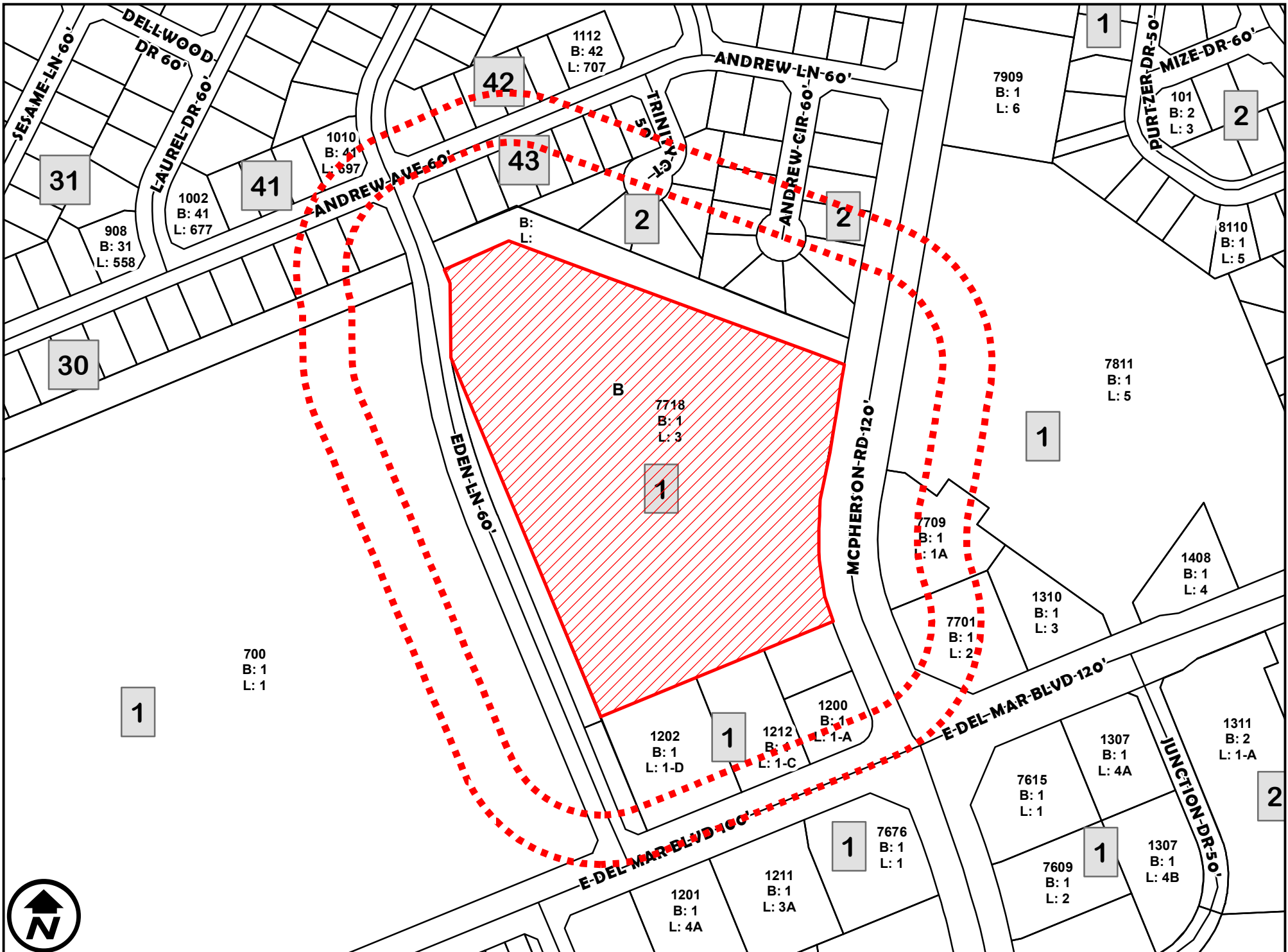


FUTURE LANDUSE

1 inch = 250 feet

ZC-069-2025
COUNCIL DISTRICT 5
7718 MCPHERSON ROAD, SUITE 106

APPLICATION FOR
B-3 (COMMUNITY BUSINESS DISTRICT) TO
S.U.P AMENDMENT FOR RESTAURANT SERVING ALCOHOL



200' AND 300' NOTIFICATION

1 inch = 250 feet

ZC-069-2025
COUNCIL DISTRICT 5
7718 MCPHERSON ROAD, SUITE 106

APPLICATION FOR
B-3 (COMMUNITY BUSINESS DISTRICT) TO
S.U.P AMENDMENT FOR RESTAURANT SERVING ALCOHOL