

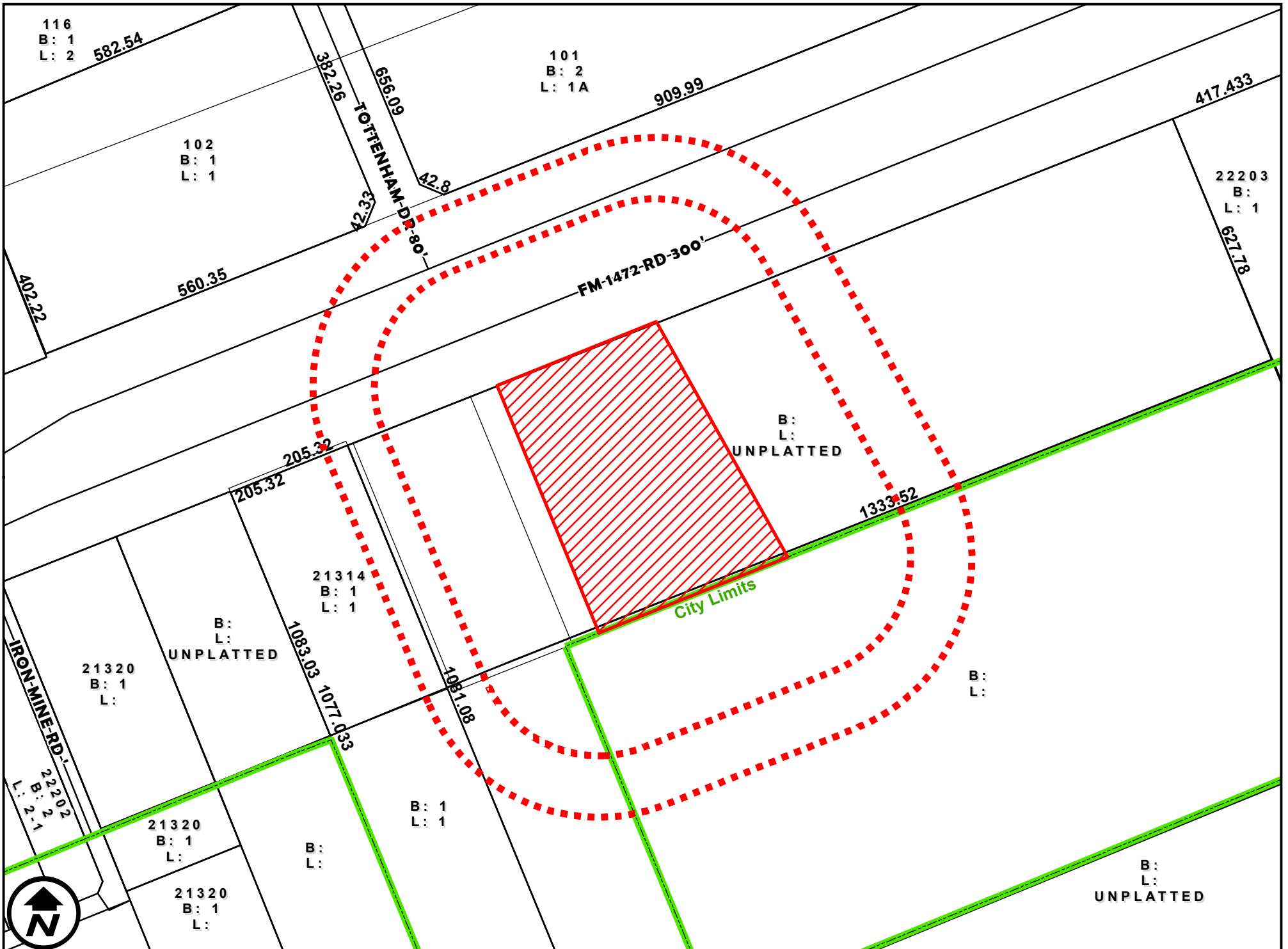
AERIAL MAP

1 inch = 200 feet

ZC-034-2025

COUNCIL DISTRICT 7
 SOUTH OF FM 1472 AND EAST OF IRON MINE ROAD

APPLICATION FOR
 AG (AGRICULTURAL DISTRICT) TO
 M-1 (LIGHT MANUFACTURING DISTRICT)

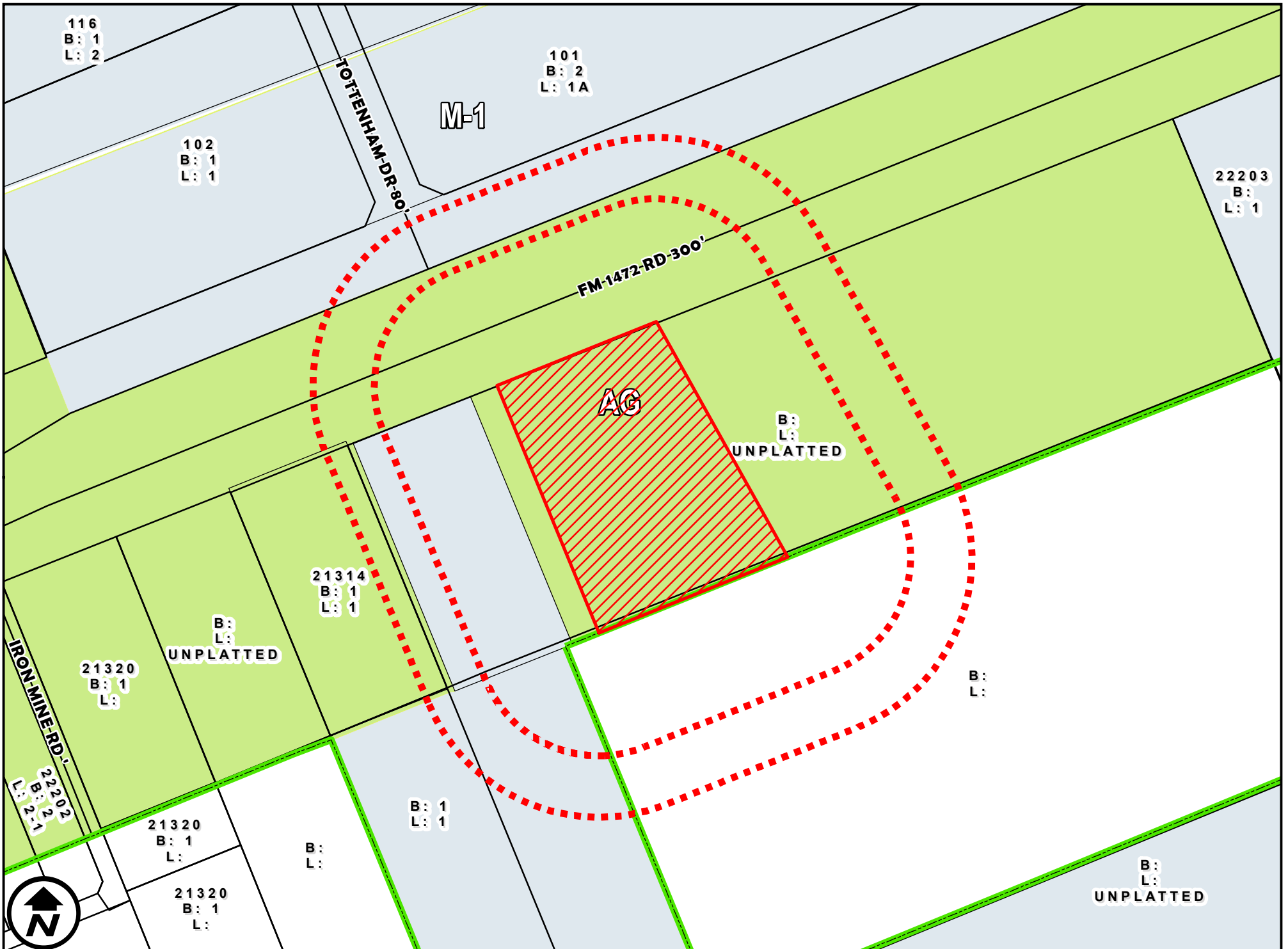


DIMENSIONS MAP

1 inch = 200 feet

ZC-034-2025
COUNCIL DISTRICT 7
SOUTH OF FM 1472 AND EAST OF IRON MINE ROAD

APPLICATION FOR
AG (AGRICULTURAL DISTRICT) TO
M-1 (LIGHT MANUFACTURING DISTRICT)



ZONING MAP

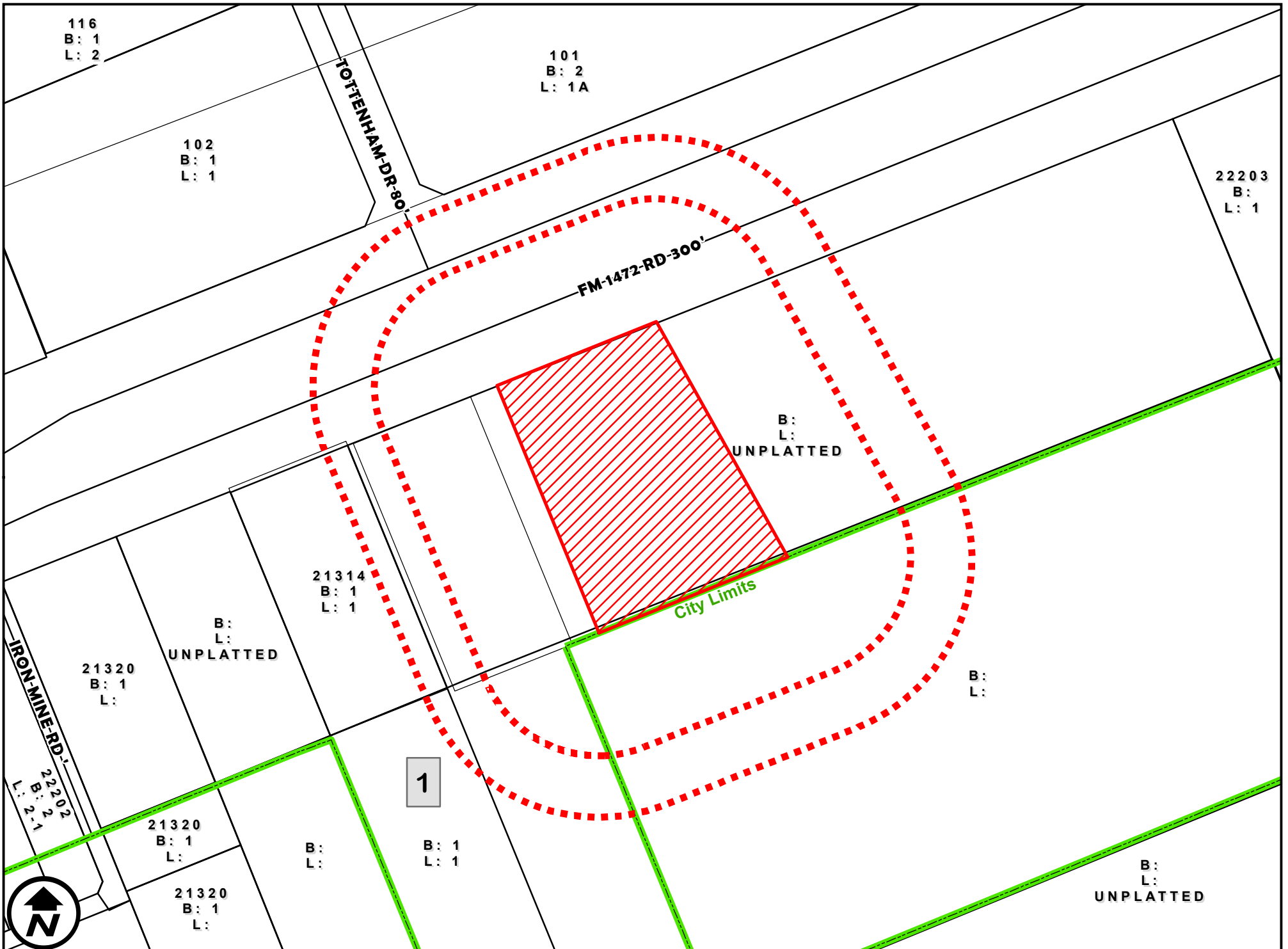
1 inch = 200 feet

ZC-034-2025

COUNCIL DISTRICT 7

SOUTH OF FM 1472 AND EAST OF IRON MINE ROAD

APPLICATION FOR
AG (AGRICULTURAL DISTRICT) TO
M-1 (LIGHT MANUFACTURING DISTRICT)

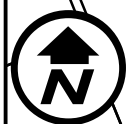


SURVEY MAP

1 inch = 200 feet

ZC-034-2025
COUNCIL DISTRICT 7
SOUTH OF FM 1472 AND EAST OF IRON MINE ROAD

APPLICATION FOR
AG (AGRICULTURAL DISTRICT) TO
M-1 (LIGHT MANUFACTURING DISTRICT)



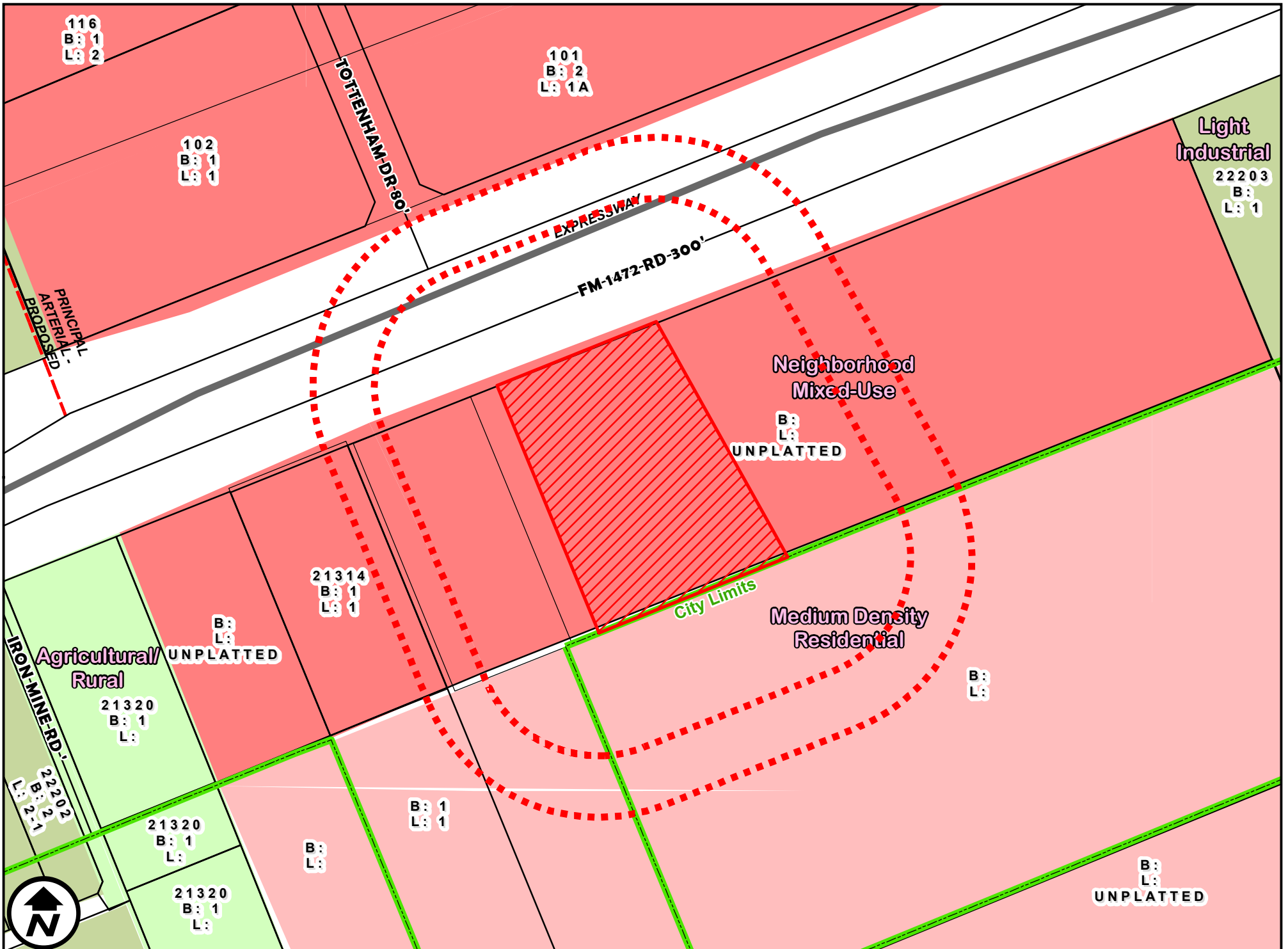
ZONING OVERVIEW

1 inch = 400 feet

ZC-034-2025

COUNCIL DISTRICT 7
SOUTH OF FM 1472 AND EAST OF IRON MINE ROAD

APPLICATION FOR
AG (AGRICULTURAL DISTRICT) TO
M-1 (LIGHT MANUFACTURING DISTRICT)



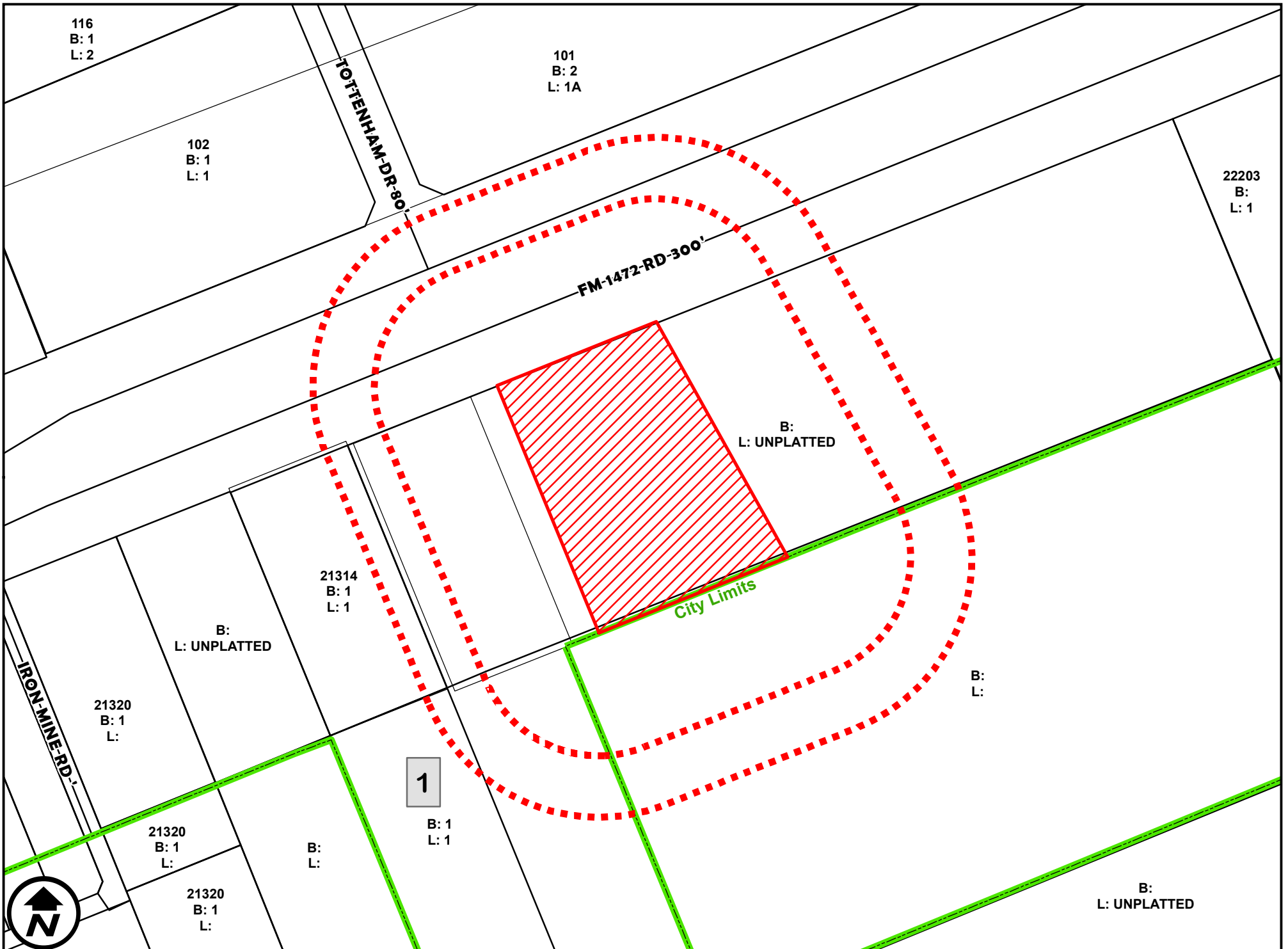
FUTURE LANDUSE

1 inch = 200 feet



ZC-034-2025
 COUNCIL DISTRICT 7
 SOUTH OF FM 1472 AND EAST OF IRON MINE ROAD

APPLICATION FOR
 AG (AGRICULTURAL DISTRICT) TO
 M-1 (LIGHT MANUFACTURING DISTRICT)



200' AND 300' NOTIFICATION

1 inch = 200 feet

ZC-034-2025

COUNCIL DISTRICT 7
SOUTH OF FM 1472 AND EAST OF IRON MINE ROAD

APPLICATION FOR
AG (AGRICULTURAL DISTRICT) TO
M-1 (LIGHT MANUFACTURING DISTRICT)