



AERIAL MAP

1 inch = 150 feet

ZC-002-2025

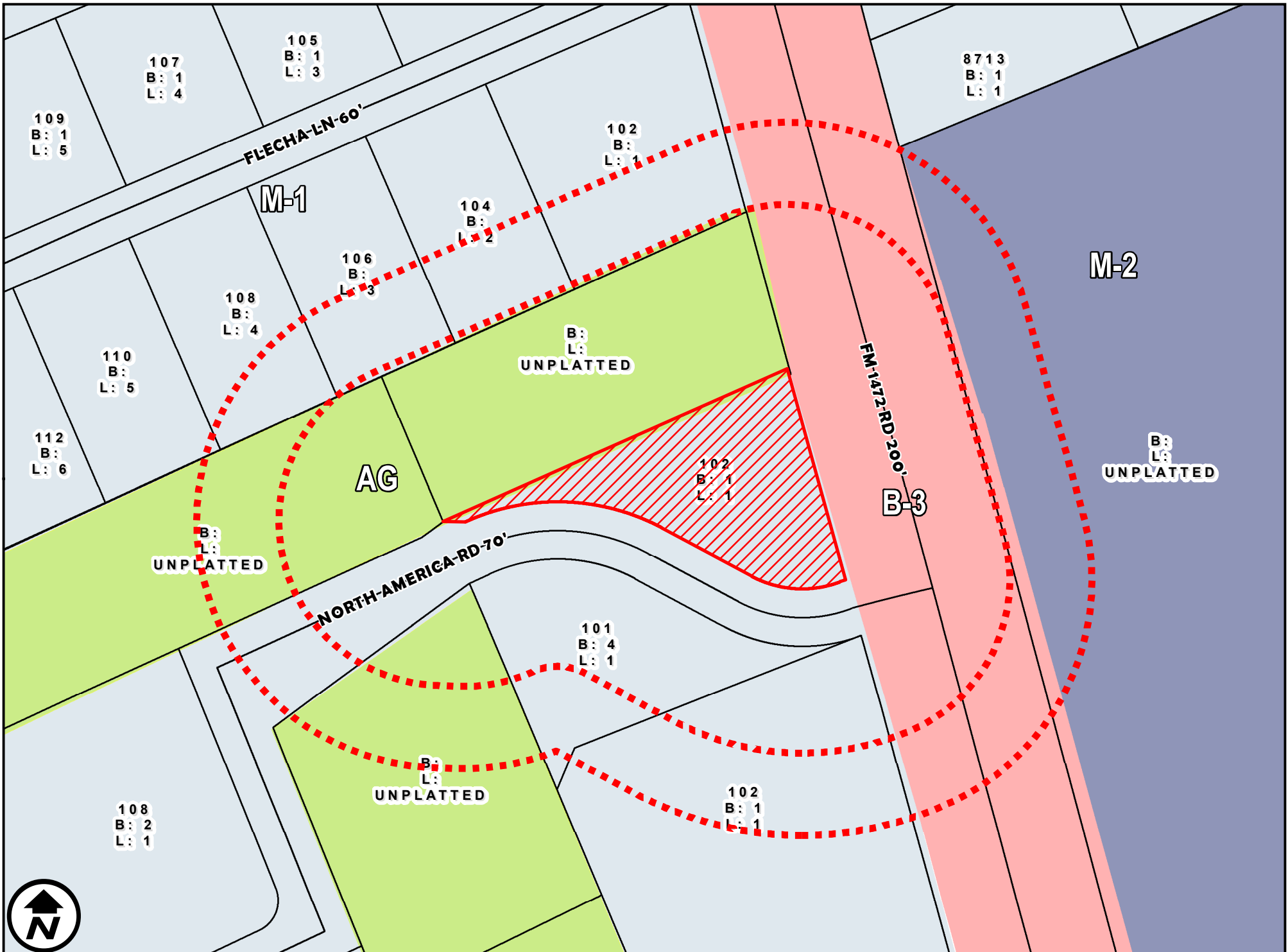
COUNCIL DISTRICT 7

102 NORTH AMERICA ROAD, SUITE NUMBER 4

APPLICATION FOR
M-1 (LIGHT MANUFACTURING DISTRICT) TO
S.U.P FOR TOBACCO SHOP



**M-1 (LIGHT MANUFACTURING DISTRICT) TO
S.U.P FOR TOBACCO SHOP**



ZONING MAP

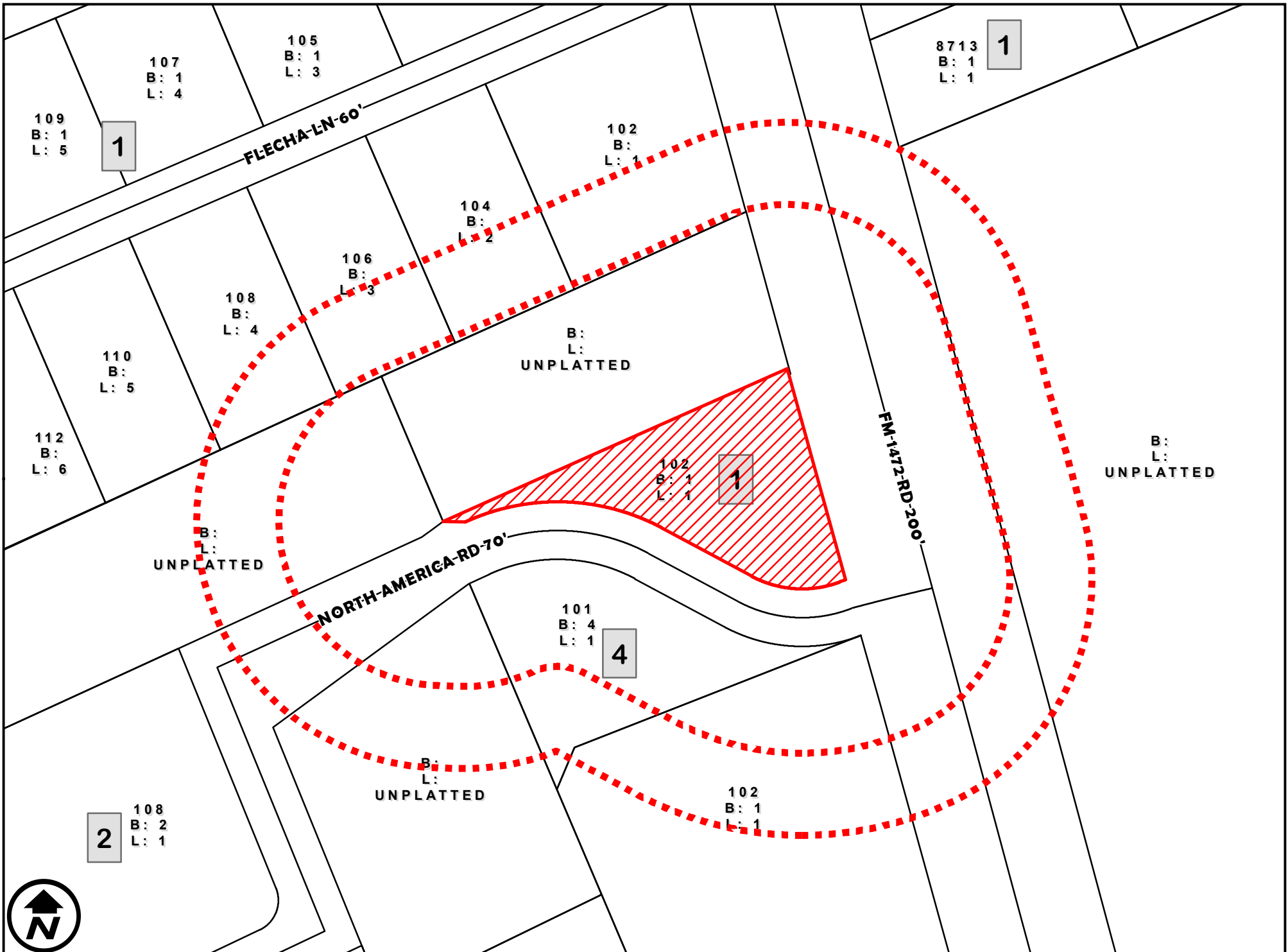
1 inch = 150 feet

ZC-002-2025

COUNCIL DISTRICT 7

102 NORTH AMERICA ROAD, SUITE NUMBER 4

APPLICATION FOR
M-1 (LIGHT MANUFACTURING DISTRICT) TO
S.U.P FOR TOBACCO SHOP



SURVEY MAP

1 inch = 150 feet

ZC-002-2025

COUNCIL DISTRICT 7

102 NORTH AMERICA ROAD, SUITE NUMBER 4

APPLICATION FOR

M-1 (LIGHT MANUFACTURING DISTRICT) TO

S.U.P FOR TOBACCO SHOP



ZONING OVERVIEW

1 inch = 300 feet

ZC-002-2025

COUNCIL DISTRICT 7

102 NORTH AMERICA ROAD, SUITE NUMBER 4

APPLICATION FOR
M-1 (LIGHT MANUFACTURING DISTRICT) TO
S.U.P FOR TOBACCO SHOP

Neighborhood Mixed-Use

107
B: 1
L: 4

105
B: 1
L: 3

109
B: 1
L: 5

102
B:
L: 1

104
B:
1.2

106
B:
L: 3

108
B:
L: 4

110
B:
L: 5

112
B:
L: 6

**B:
L:
UNPLATTED**

B:
L:
UNPLATTED
Agricultural
Rural

~~102
B: 1
L: 1~~

A close-up view of a map segment. A road is depicted with a black line, and the text "NORTH-AMERICA-RD-70" is printed along it. The map features a green background with black lines representing roads and boundaries.

101
B: 4
L: 1

Light Industrial

**B:
L:
UNPLATTED**

102
B: 1
L: 1

108
B: 2
L: 1

8713
B: 1
L: 1

**B:
L:
UNPLATTED**

Heavy Industrial

FM 1472 RD 200'



FUTURE LANDUSE

1 inch = 150 feet

ZC-002-2025

COUNCIL DISTRICT 7

102 NORTH AMERICA ROAD, SUITE NUMBER 4

APPLICATION FOR
M-1 (LIGHT MANUFACTURING DISTRICT) TO
S.U.P FOR TOBACCO SHOP

