

AERIAL MAP

ZC-071-2025

COUNCIL DISTRICT 5

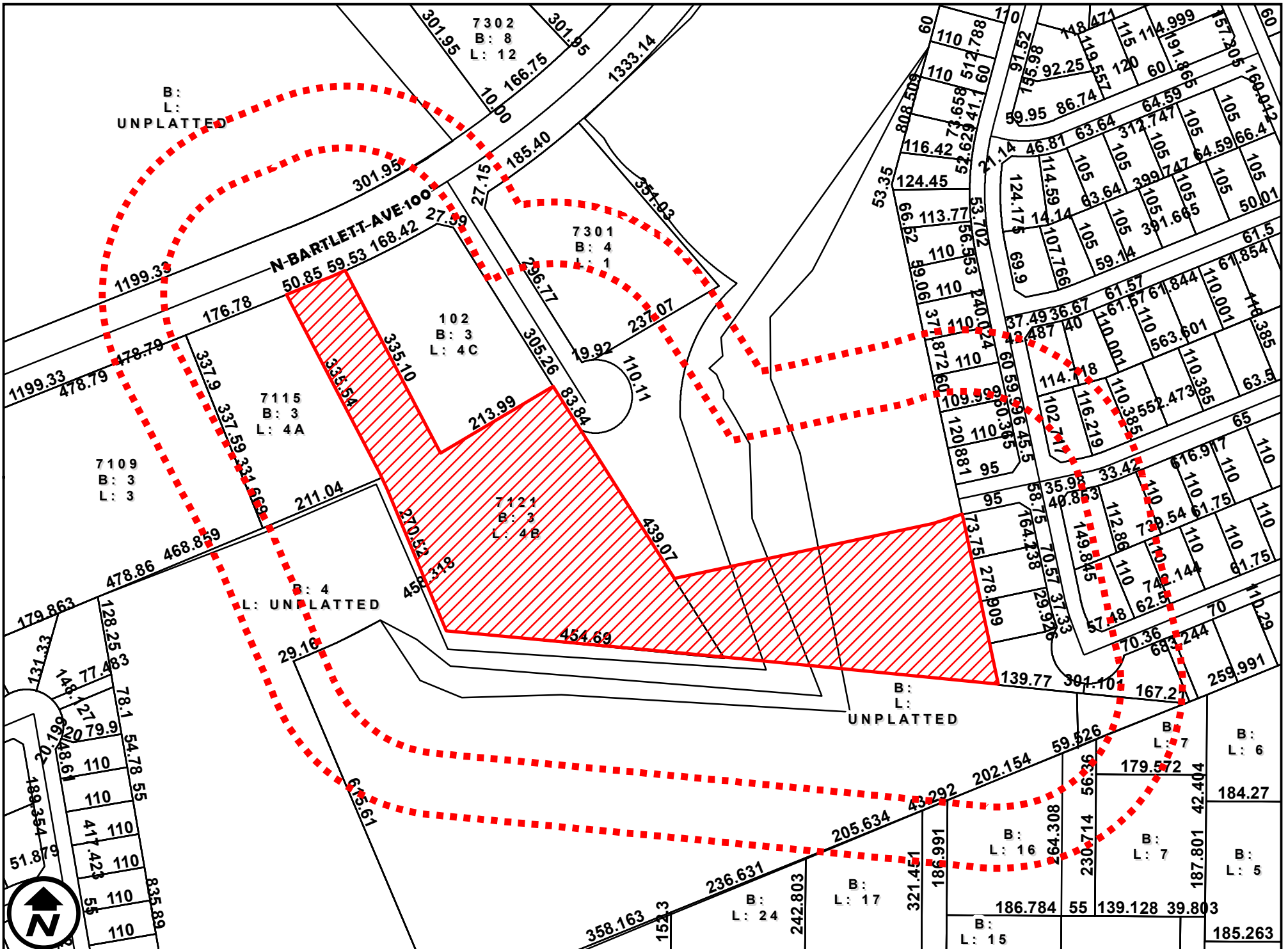
7121 NORTH BARTLETT AVENUE AND

B-3 (COMMUNITY BUSINESS DISTRICT) AND R-1 (SINGLE FAMILY RESIDENTIAL DISTRICT) TO

S.U.P FOR MINI STORAGE

1 inch = 200 feet

APPROXIMATELY 2.15 ACRE TRACT LOCATED SOUTH OF NORTH BARTLETT AVENUE AND WEST OF HARPER LEE DRIVE

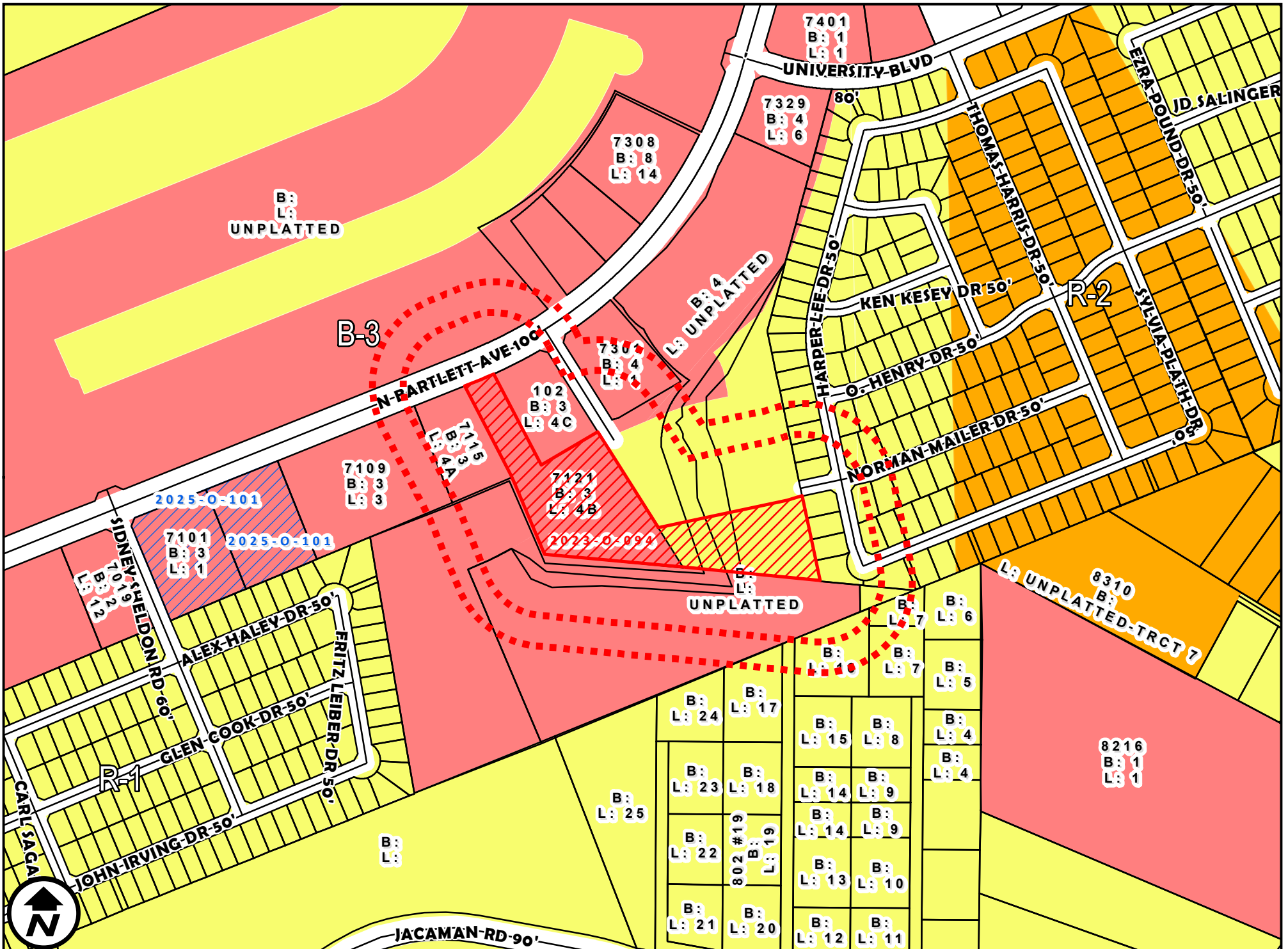




S.U.P FOR MINI STORAGE

APPROXIMATELY 2.15 ACRE TRACT LOCATED SOUTH OF NORTH BARTLETT AVENUE AND WEST OF HARPER LEE DRIVE





ZONING OVERVIEW

ZC-071-2025

COUNCIL DISTRICT 5

7121 NORTH BARTLETT AVENUE AND

APPROXIMATELY 2.15 ACRE TRACT LOCATED SOUTH OF NORTH BARTLETT AVENUE AND WEST OF HARPER LEE DRIVE

B-3 (COMMUNITY BUSINESS DISTRICT) AND R-1 (SINGLE FAMILY RESIDENTIAL DISTRICT) TO

S.U.P FOR MINI STORAGE

1 inch = 400 feet

APPLICATION FOR



S.U.P FOR MINI STORAGE

APPROXIMATELY 2.15 ACRE TRACT LOCATED SOUTH OF NORTH BARTLETT AVENUE AND WEST OF HARPER LEE DRIVE

