

AERIAL MAP

1 inch = 150 feet

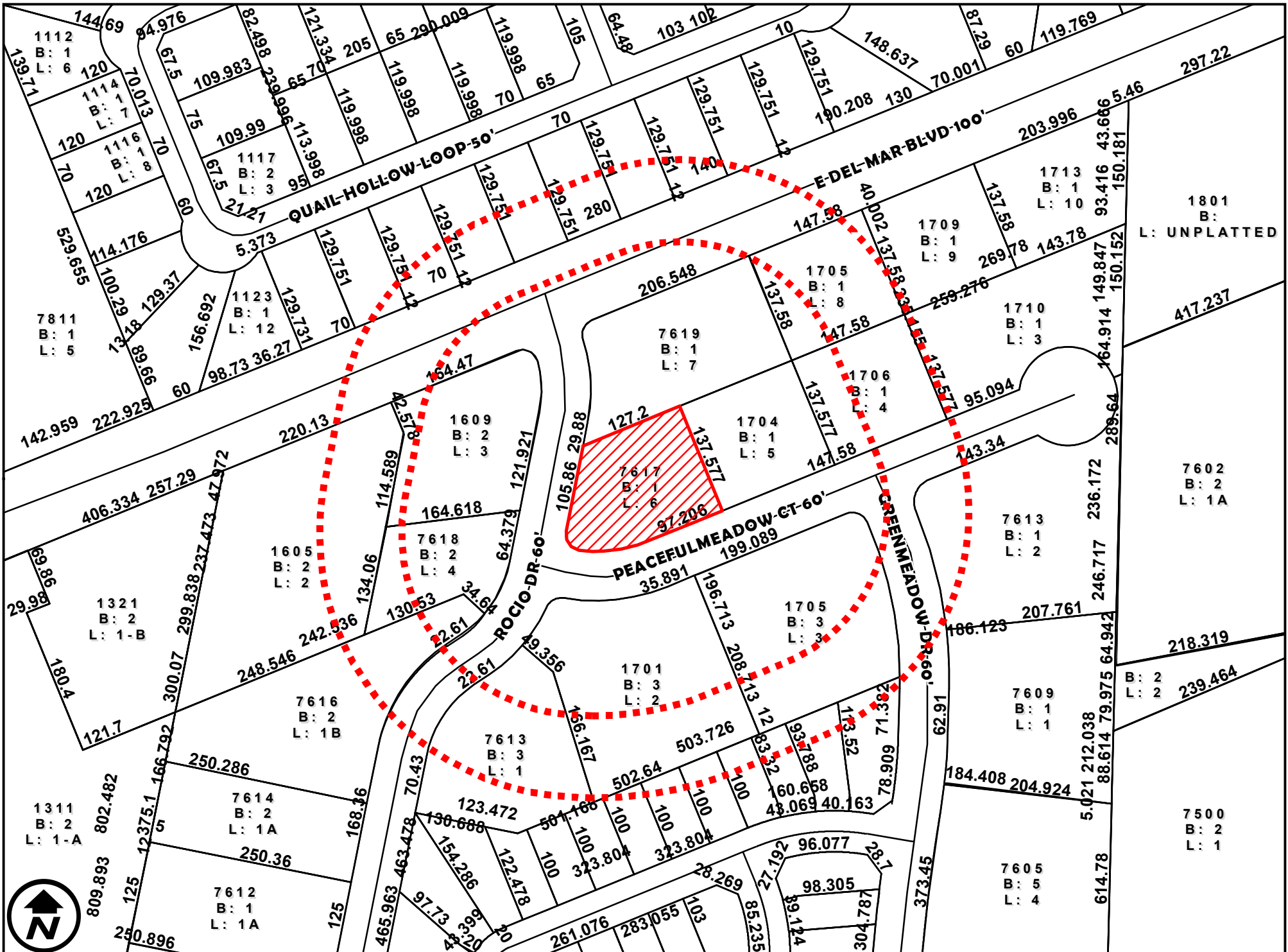
ZC-036-2025

COUNCIL DISTRICT 5

7617 PEACEFULMEADOW COURT, UNIT A26

APPLICATION FOR

**B-1 (LIMITED BUSINESS DISTRICT) TO
C.U.P FOR RESTAURANT (DRIVE-THRU)**



DIMENSIONS MAP

1 inch = 150 feet

ZC-036-2025

COUNCIL DISTRICT 5

7617 PEACEFULMEADOW COURT, UNIT A26

APPLICATION FOR

B-1 (LIMITED BUSINESS DISTRICT) TO

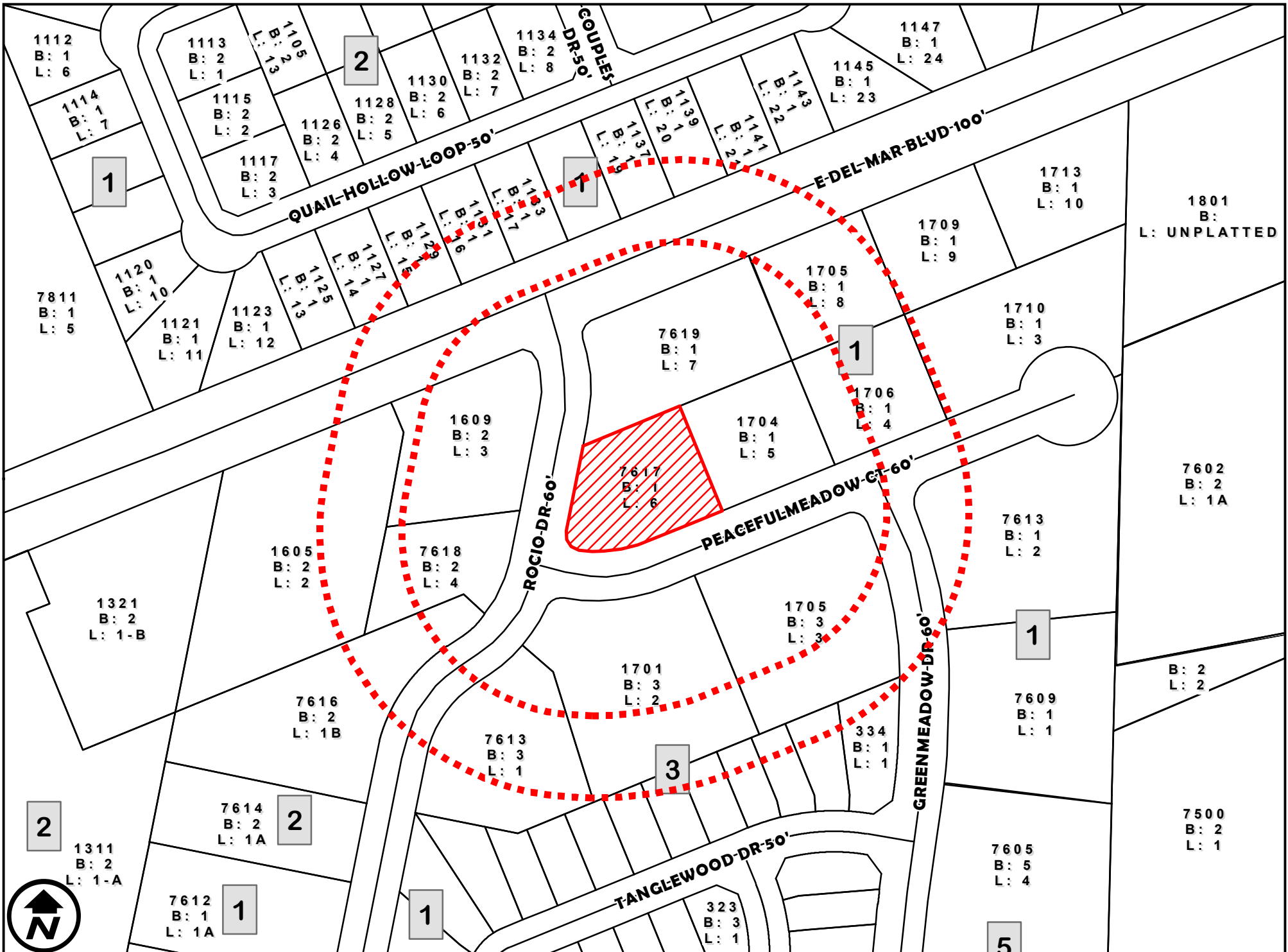
C.U.P FOR RESTAURANT (DRIVE-THRU)



1 inch = 150 feet

7617 PEACEFULMEADOW COURT, UNIT A26

**B-1 (LIMITED BUSINESS DISTRICT) TO
C.U.P FOR RESTAURANT (DRIVE-THRU)**



SURVEY MAP

1 inch = 150 feet

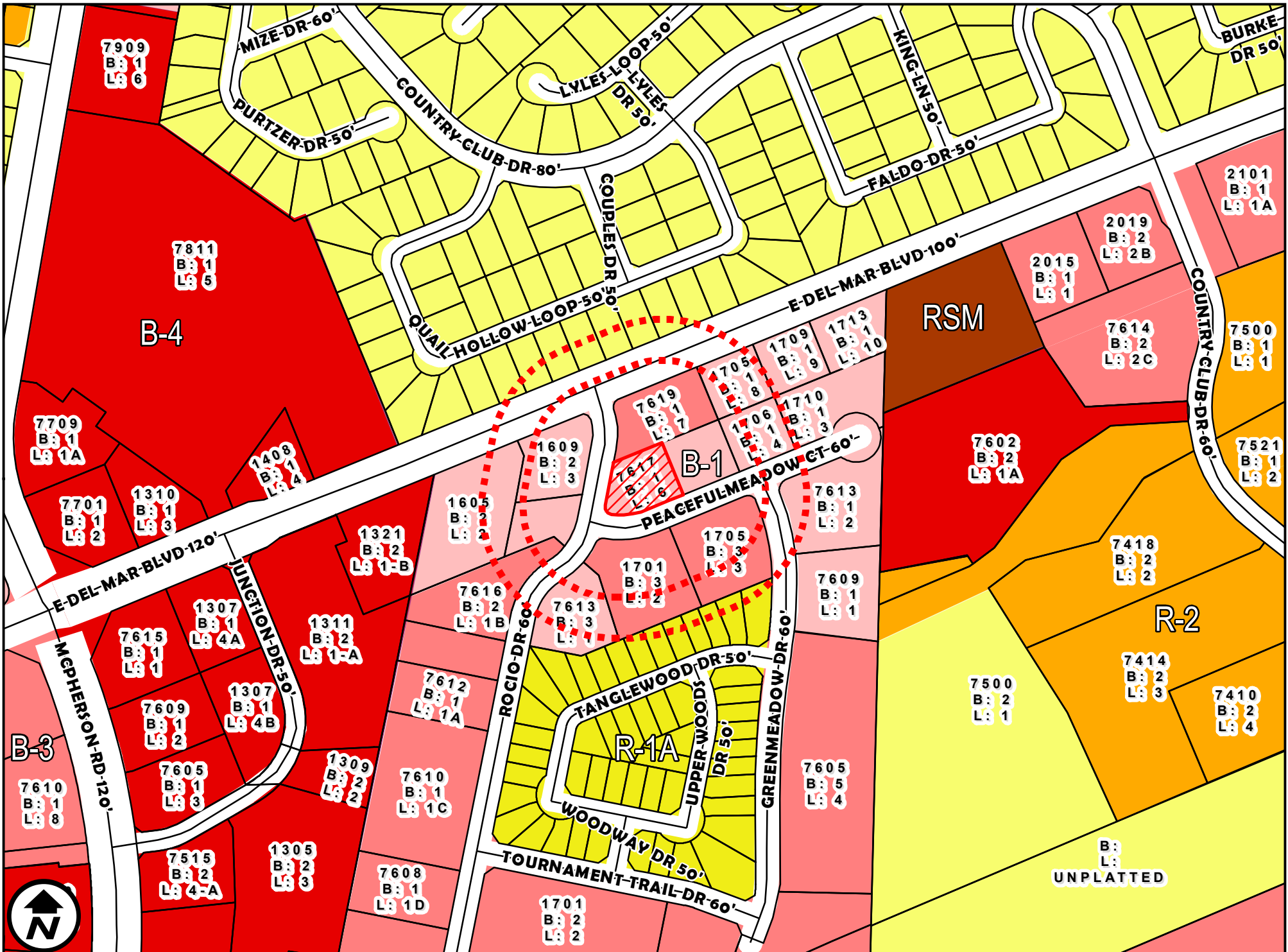
ZC-036-2025

COUNCIL DISTRICT 5

7617 PEACEFULMEADOW COURT, UNIT A26

APPLICATION FOR

B-1 (LIMITED BUSINESS DISTRICT) TO
C.U.P FOR RESTAURANT (DRIVE-THRU)



ZONING OVERVIEW

1 inch = 300 feet

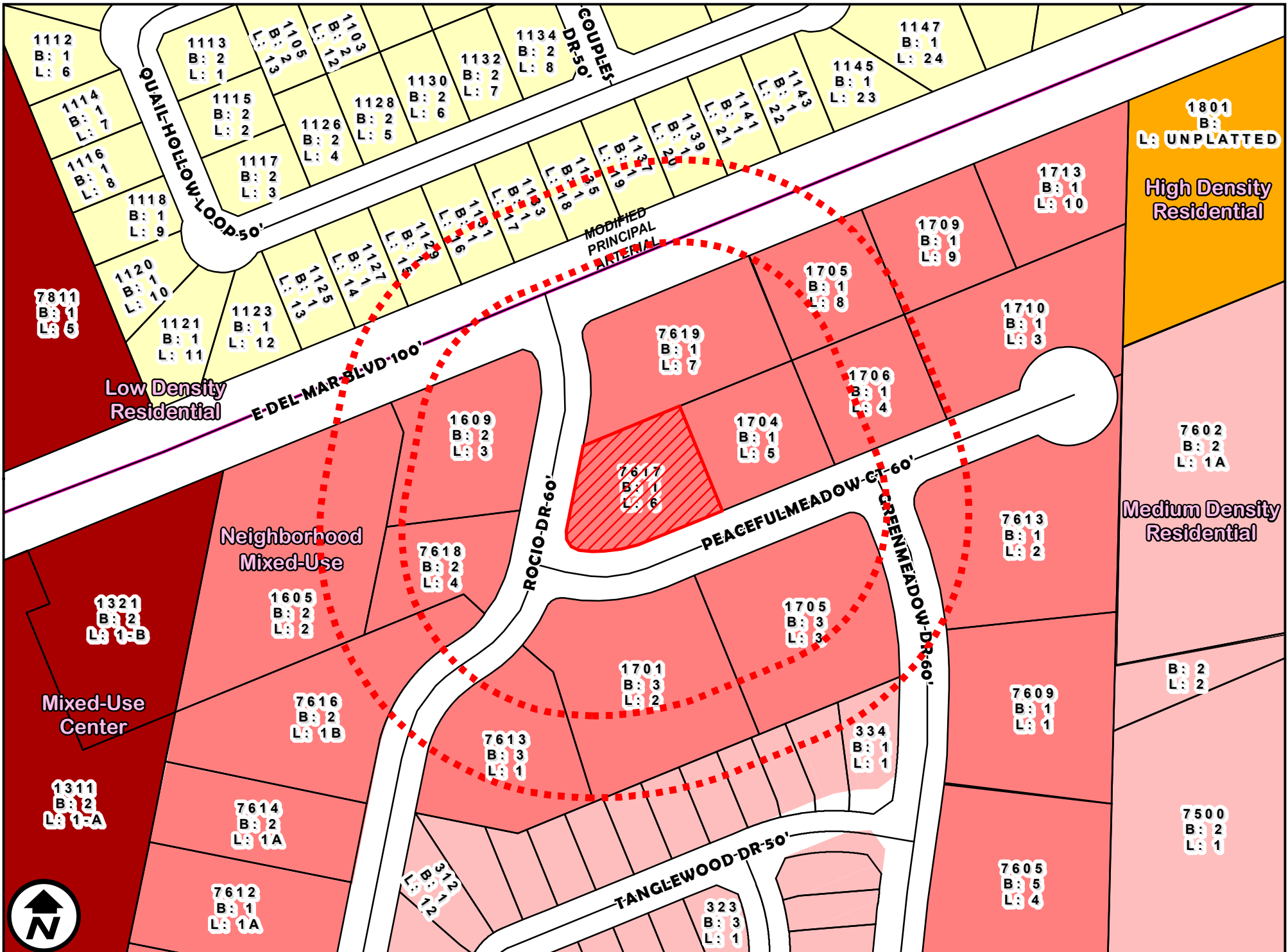
ZC-036-2025

COUNCIL DISTRICT 5

7617 PEACEFULMEADOW COURT, UNIT A26

APPLICATION FOR

B-1 (LIMITED BUSINESS DISTRICT) TO
C.U.P FOR RESTAURANT (DRIVE-THRU)

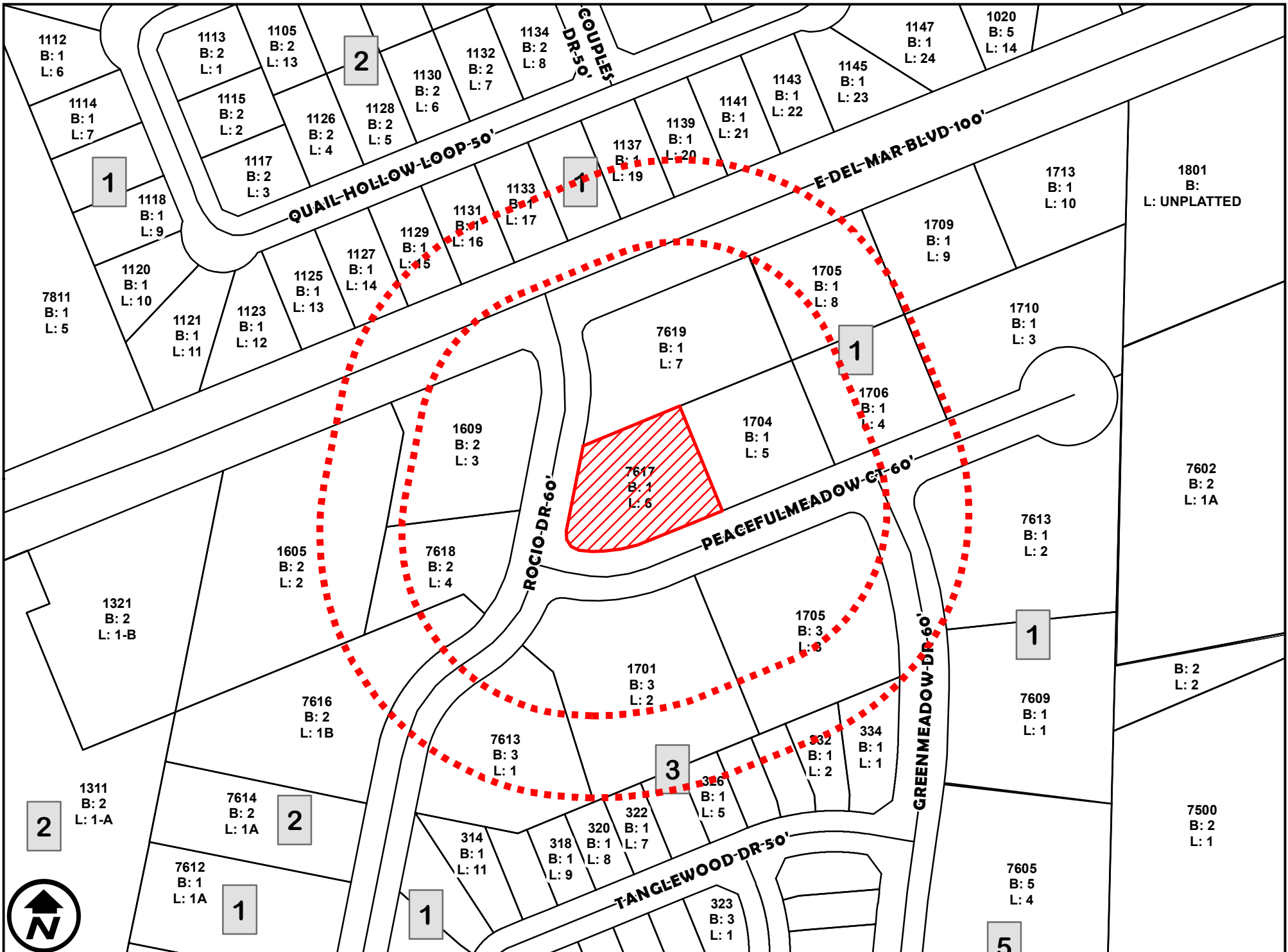


FUTURE LANDUSE

1 inch = 150 feet

ZC-036-2025
COUNCIL DISTRICT 5
7617 PEACEFULMEADOW COURT, UNIT A26

APPLICATION FOR
B-1 (LIMITED BUSINESS DISTRICT) TO
C.U.P FOR RESTAURANT (DRIVE-THRU)



200' AND 300' NOTIFICATION

1 inch = 150 feet

ZC-036-2025

COUNCIL DISTRICT 5

7617 PEACEFULMEADOW COURT, UNIT A26

APPLICATION FOR

B-1 (LIMITED BUSINESS DISTRICT) TO
C.U.P FOR RESTAURANT (DRIVE-THRU)