

AERIAL MAP

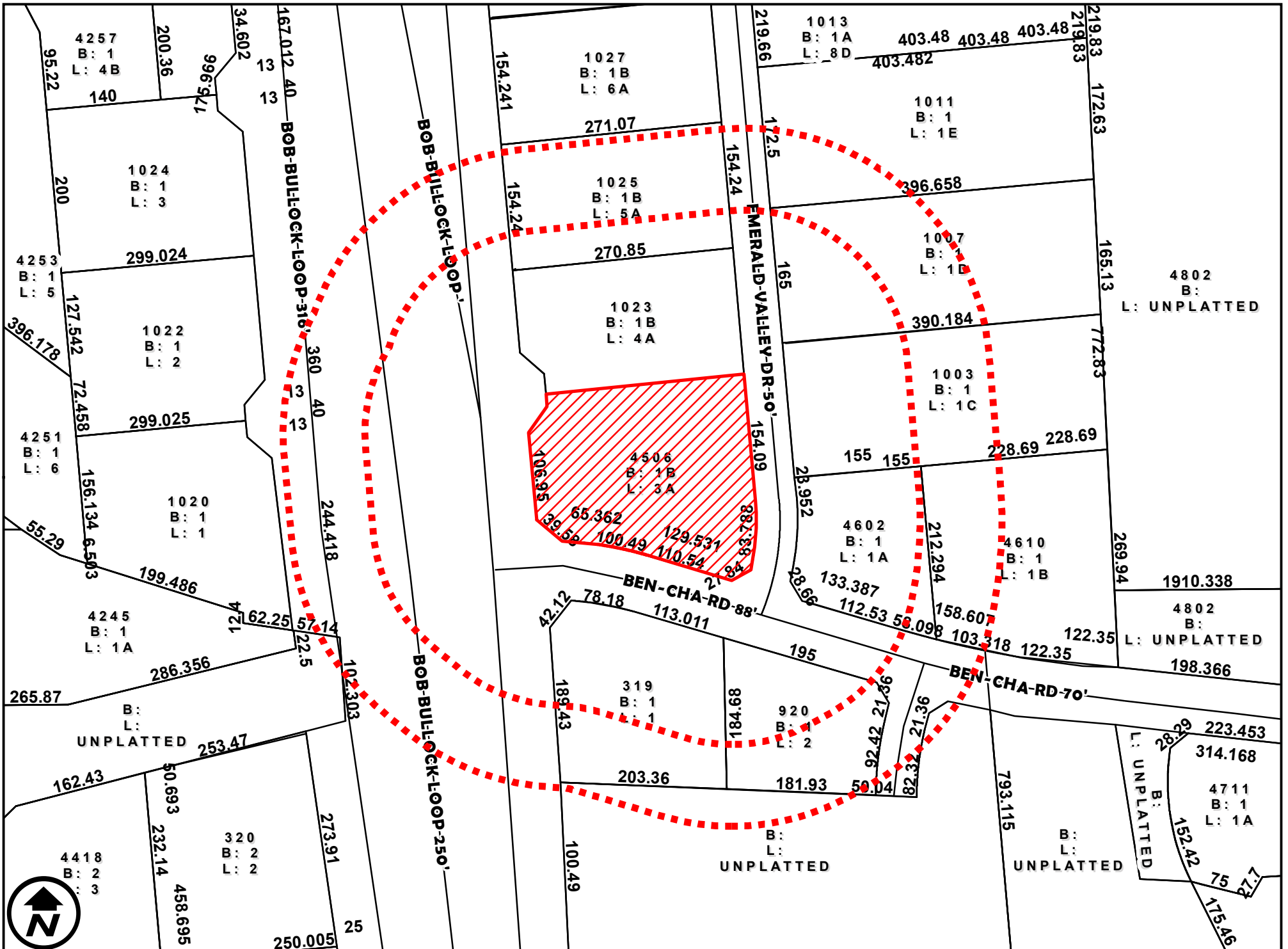
ZC-051-2026

APPLICATION FOR

1 inch = 150 feet

COUNCIL DISTRICT 3  
4506 BEN-CHA ROAD

B-3 (COMMUNITY BUSINESS DISTRICT) TO  
C.U.P. FOR CONVENIENCE STORE AND GAS STATION (SERVING ALCOHOL WITH ON-PREMISE CONSUMPTION).



DIMENSIONS MAP

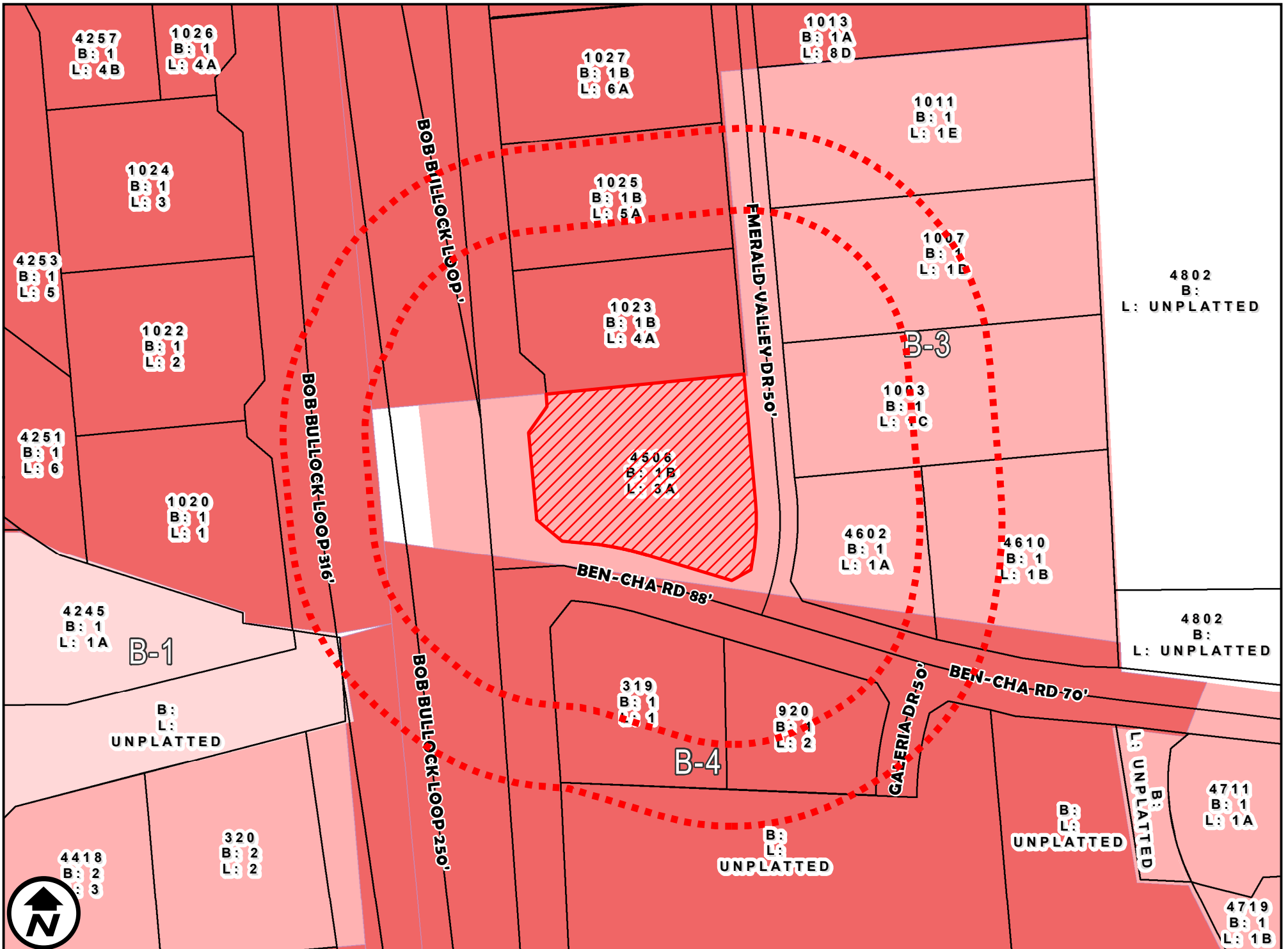
ZC-051-2026

APPLICATION FOR

1 inch = 150 feet

COUNCIL DISTRICT 3  
4506 BEN-CHA ROAD

B-3 (COMMUNITY BUSINESS DISTRICT) TO  
C.U.P. FOR CONVENIENCE STORE AND GAS STATION (SERVING ALCOHOL WITH ON-PREMISE CONSUMPTION).



ZONING MAP

ZC-051-2026

APPLICATION FOR

COUNCIL DISTRICT 3

B-3 (COMMUNITY BUSINESS DISTRICT) TO

1 inch = 150 feet

4506 BEN-CHA ROAD

C.U.P. FOR CONVENIENCE STORE AND GAS STATION (SERVING ALCOHOL WITH ON-PREMISE CONSUMPTION).



SURVEY MAP

ZC-051-2026

APPLICATION FOR

COUNCIL DISTRICT 3

B-3 (COMMUNITY BUSINESS DISTRICT) TO

1 inch = 150 feet

4506 BEN-CHA ROAD

C.U.P. FOR CONVENIENCE STORE AND GAS STATION (SERVING ALCOHOL WITH ON-PREMISE CONSUMPTION).





FUTURE LANDUSE

ZC-051-2026

APPLICATION FOR

COUNCIL DISTRICT 3

B-3 (COMMUNITY BUSINESS DISTRICT) TO

1 inch = 150 feet

4506 BEN-CHA ROAD

C.U.P. FOR CONVENIENCE STORE AND GAS STATION (SERVING ALCOHOL WITH ON-PREMISE CONSUMPTION).



200' AND 300' NOTIFICATION ZC-051-2026

COUNCIL DISTRICT 3  
4506 BEN-CHA ROAD

1 inch = 150 feet

C.U.P. FOR CONVENIENCE STORE AND GAS STATION (SERVING ALCOHOL WITH ON-PREMISE CONSUMPTION).

APPLICATION FOR

B-3 (COMMUNITY BUSINESS DISTRICT) TO