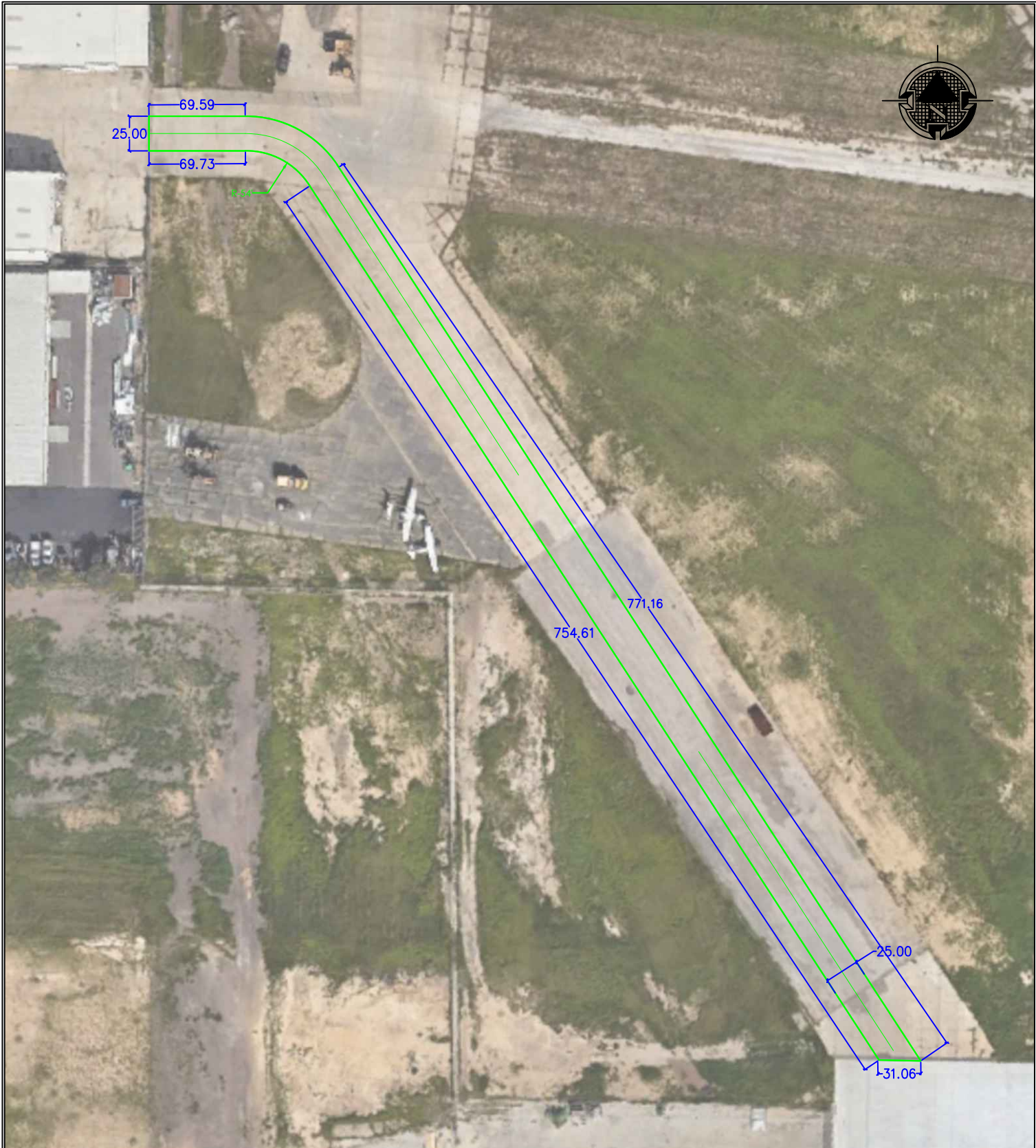




**Concrete Road**  
**5210 Bob Bullock Loop**  
Laredo, Texas

**VICINITY MAP**

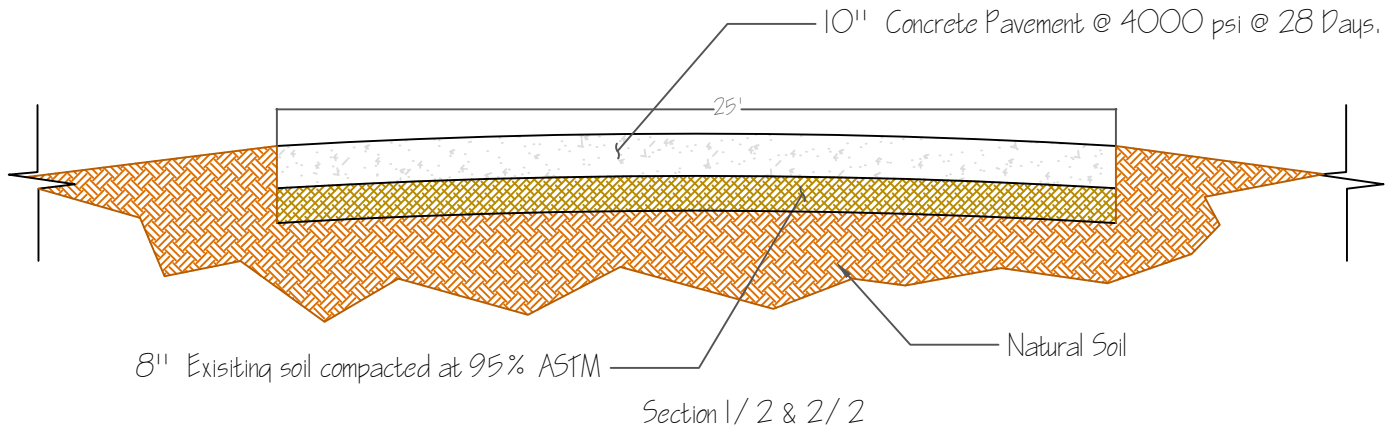
Date:  
3/09/2026  
Scale:  
NTS  
Drawn By:  
Oscar Martel, E.I.T.  
Reviewed By:  
Oscar Martel, E.I.T.  
Page:  
1 of 4



**Concrete Road  
5210 Bob Bullock Loop  
Laredo, Texas**

**DIMENSIONS**

Date:  
3/09/2026  
Scale:  
NTS  
Drawn By:  
Oscar Martel, E.I.T.  
Reviewed By:  
Oscar Martel, E.I.T.  
Page:  
1 of 4



1. Remove Existing Concrete Pavement (Full Depth)
2. Remove Existing Asphalt Pavement (Full Depth)
3. 10 in. Concrete Pavement 4000 psi @ 28 Days.
4. 8 in. SubBase Course at 95% Compaction Tex-113
5. Contractor shall verify field measurements.



**Concrete Road**  
**5210 Bob Bullock Loop**  
 Laredo, Texas

VICINITY MAP

Date:  
3/09/2026  
 Scale:  
NTS  
 Drawn By:  
Oscar Martel, E.I.T.  
 Reviewed By:  
Oscar Martel, E.I.T.  
 Page:  
1 of 4

# Bid Package Specification:

## 10-Inch Concrete Pavement

### 1. Scope

Construction of **10-inch thick Portland cement concrete (PCC) pavement** on an **existing subbase of unknown condition**, reinforced with **#5 rebars at 12-inch on-center (o.c.)**, with **15-foot transverse construction joints**, sealed with **cedar-compatible flexible joint sealant**.

The **Contractor shall bear all costs for laboratory testing selected by Laredo International Airport**, which shall be **inspected and approved by the City of Laredo**.

---

### 2. Subgrade and Subbase

1. The existing subbase is **unknown in type and condition**. The Contractor shall:
    - Excavate, proof-roll, and remove any unstable material.
    - Replace or repair subbase as necessary to provide a firm, uniform support.
  2. All new or repaired subbase shall conform to **Tex-113-E** for moisture-density relationships.
- 

### 3. Concrete

1. Concrete shall have a **minimum 28-day compressive strength of 4000 psi**.
  2. Concrete shall be durable, and suitable for pavement applications.
  3. Mix design, maximum water-cement ratio, and admixtures shall comply with standard PCC pavement practices.
  4. **#5 rebars shall be placed at 12-inch o.c. both longitudinally and transversely** to reinforce the slab.
- 

### 4. Pavement Thickness

- Minimum **10 inches** thick measured from top of prepared subbase to finished surface.
  - Thickness variation shall not exceed  $\pm 0.25$  inch.
-

## 5. Construction Joints

1. **Transverse construction joints** every 15 feet.
  2. Joints shall be formed to full depth with **cleaned faces**.
  3. Joints shall be sealed with a **flexible cedar-compatible sealant** applied per manufacturer's instructions.
- 

## 6. Finishing and Curing

1. Finish pavement to a **smooth, uniform surface** with correct grade and cross slope.
  2. Cure concrete for a **minimum of 7 days** using wet coverings, curing compounds, or approved methods to prevent moisture loss.
- 

## 7. Construction Tolerances

Item	Tolerance
Pavement thickness	±0.25 inch
Surface smoothness	0.10 inch in 10 feet straightedge
Transverse and longitudinal joint spacing	±1 inch
Rebar spacing	12-inch o.c. ±0.5 inch

---

## 8. Testing and Quality Control

1. Concrete compressive strength tested at 7 and 28 days.
  2. Subbase compaction and moisture-density verified per **Tex-113-E**.
  3. **All laboratory testing shall be paid for by the Contractor and inspected by the Laredo International Airport.**
  4. Joint sealant shall be inspected for **continuity, adhesion, and proper installation.**
  5. Any work failing to meet specifications shall be **removed and replaced at Contractor's expense.**
- 

### Overall Project Description

- 10-inch PCC pavement
- #5 rebars at **12-inch o.c.**
- 15-foot construction joints with cedar-compatible sealant
- 4000 psi concrete
- Tex-113-E subbase
- Contractor-paid, city-inspected testing