

Tree City USA

APPLICANT		ID = 71
Project Title	Laredo Arbor Day 2024	
Organization Name	City of Laredo environmental Services & Keep Laredo Beautiful	
Street Address	619 Reynolds Laredo, TX 78040	
Mailing Address	Same as above	
UEI	HWX7C56NNUVI	
FEIN	20-3018827	
Applicant Type	Non-Profit	
Partners	City of Laredo Parks, Environmental Services, District 1, Keep Laredo Beautiful & Rotary not excluding Sponsor/Volunteer organizations such as Coca Cola, Concentrix and Uber Freight.	
Region	Valley	

CONTACT	
Contact Name	Ruby Miranda
Contact Title	Program Manager
Email	rvmiranda@ci.laredo.tx.us
Phone	(956) 794-1658

PROJECT	
TreeCity	No
Project Overview	Texas A&M Forest Service has placed Laredo as part of the 29 Crucial Greening Communities in the 65 Planting Priority Cities where analysis has shown that trees can make a sizable impact. The Council on Environmental Quality's CEJST categorizes Laredo as a disadvantaged community being in the 83rd percentile for low income. The proposed project will plant 120 trees at Independence Hills Park at 1102 Merida to commemorate Texas Arbor Day on November 16, 2024. Trust for Public Land announced recently that Laredo ranked 74th of 100 on the 2023 Park Score index for best park systems in the United States. The park is located in Tract 48479001824 where the EPA EJ Screening Tool ranks it in the 94th percentile for particulate matter and 91st for toxic releases to air. This site will benefit from planting 120 trees by alleviating some of the air pollution in the area as well as preventing stormwater pollution, providing shade for residents, and providing critical habitat for local wildlife.
Goals Objectives	Keep Laredo Beautiful's (KLB) objective is to foster a greener urban environment by actively promoting sustainability & encouraging residents to embrace park amenities. This would be achieved through initiatives such as enhancing tree canopy coverage and implementing beautification projects. With hot temperatures during the spring/summer seasons, KLB aims to encourage people to remain active by utilizing park amenities with tree afforestation. The proposed project goals are: (goal 1) increase urban and community tree canopy coverage, (goal 2) engage the community, (goal 3) promote benefits of trees, (goal 4) enhance the quality of life as it relates to environmental conditions, (goal 5) address air and water quality. Independence Hills Park is a priority landscape because it has been severely degraded by urbanization. Goal 1 of this project is to increase urban & community tree canopy coverage with the objective of planting 120 trees. With a detention pond in the park, adding trees will prevent the exposed soil to runoff during storms. The objective of planting 120 trees in the area will address the water quality aspect of goal 5 by reducing stormwater pollution.

Goal 2 will be achieved by the objective of recruiting the community to participate in tree planting. KLB, Parks & Environmental Services have extensive experience coordinating tree planting events. Goal 3, promoting the benefits of trees, will be achieved through training, education, and outreach in addition the tree planting training by the City Forester will take place the day of the event and a recorded video will be shared to registered participants the day before the event. Goal 4 is to enhance the quality of life as it relates to environmental conditions in Laredo and goal 5 is to address air quality. Laredo's air quality is of noticeable concern, ranking Laredo in the 94th percentile for particulate matter & 91st for toxic releases to air according to the EPA's Environmental Justice Screening Tool.

Proposed Activities

The 120 trees are marked on the tree map according to best practices by City Forester as well as planting native or locally-adapted trees based on years of observation in the region. KLB will provide materials and supplies. Parks will provide materials & labor, which includes a training session on how to plant trees & their many benefits by the Forester. Environmental Services will provide supplies, labor, and advertising. The proposed activities for this project will start 3 months before the event with a meeting between representatives from Keep Laredo Beautiful, Parks and Recreation, Environmental Services, & District 1. City of Laredo will keep a sign in sheet of attendance of these meetings to Texas A&M Forest & Services. Within two weeks of the first meeting, partners will join the City of Laredo Forester in conducting a site visit at the tree planting sites to re-assess the proposed tree planting locations and make specific recommendations of tree species according to general space, distance between new and existing trees, irrigation accessibility, and other place-related considerations. An updated list of the recommended tree varieties, quantities, and locations will be provided to Texas A&M Forest Service. KLB will solicit quotes in accordance with Appendix A of the RFP from at least 3 vendors & select the lowest cost value in accordance with the City of Laredo procurement process. KLB will provide Texas A&M Forest Service with a notice of the vendor selected as well as copies of the purchase order, order confirmation, and invoice (once all items have been received). Two months before the tree planting event KLB will work on designing the event flyer & the Environmental Services Department will work on designing educational materials to circulate prior to the event. Once the designs are finalized and approved by team members (approximately 1 month before the event), the respective partners will share and circulate the event flyer and educational materials. These design products will be shared with Texas A&M Forest Service. Within the month before the event, Environmental Services will be inviting key participants to partake in at least 3 interviews promoting the event as well as the benefits of trees. Within two weeks after the event, Keep Laredo Beautiful will provide Texas A&M with data regarding the outcomes of the event including, date held, number of volunteers attended, amount of volunteer hours, and total trees planted.

Deliverables

KLB will start conducting site visits & meetings 3 months prior to the scheduled date for the event.

Tree planting is important for a variety of reasons because trees provide habitat for wildlife such as birds and insects, helping to promote biodiversity in cities, they also help absorb rainwater, reducing stormwater runoff, trees absorb pollutants such as carbon dioxide, nitrogen dioxide, and sulfur dioxide, reducing their concentration in the air we breathe, trees help cool urban areas by providing shade and through transpiration- trees release water vapor in the air, lastly, trees improve the look and feel of its surrounding areas, making the location appealing to residents and visitors. The project will be visible to all residents; this specific park hosts at least 3 community events a year such as the Easter Egg Hunt, Family Day Out and Jingle all the way where residents around the community get to enjoy with their families. The city has a PIO Department in which KLB and other city departments are able to use to their advantage. By creating Public service announcements to care for the park and invite the community to join in planting trees for the event. Along with that KLB & the City both have very active social media accounts that are followed by Laredoans. Through these accounts, they showcase all the beautification projects that Keep Laredo Beautiful is doing. KLB's goal is to add more trees to the rest of the park. It is a very large park with a need of over 300 trees that the community and animals will be able to enjoy.

Sustainability	<p>KLB can carry out this project in these ways:</p> <ul style="list-style-type: none"> • Maintain a productive, positive working relationship with the Parks Department • Media promotion, legal & risk assessment, insurance coverage, logistics, staffing through city departments • Board of Directors, Program Manager, an intern & assistant • Maintain an active database of volunteers from area schools and organizations <p>The nursery at Slaughter Park has the potential to grow and maintain an inventory of plants and trees. We would aim to promote native, water conserving trees, but also focus on shade trees aimed at “cooling” Laredo. Keep Laredo Beautiful already has a unique and specific working relationship with the Parks Department. KLB will also make sure that irrigation and digging of the holes, where the trees will be planted, are worked on before the tree planting event. During the event, the forestry division will be aiding the volunteers by making sure the trees are being well handled during the planting process. The volunteers will be instructed in a step-by-step process to add fertilizer, compost, dirt, and mulch. After the event the city forestry division goes back to the tree planting location to make sure that the trees are planted properly & add nozzles.</p>
Community Need	<p>Being in a quiet natural place promotes stress reduction and attention restoration, and evidence suggests that local green space serves as a gathering point that fosters community cohesion, allowing for people to know their neighbors and form social bonds that promote health and safety. Trees also assist with erosion control and habitat enhancement for the support of local wildlife and provide a cooling effect. In a July 2017 data analysis project focusing on factors that contribute to poverty, Laredo was the recipient of technical support from the Bloomberg Data portfolio of resources, and the City was able to develop a series of maps assessing these factors. One significant data subset that was mapped was the surface temperature of the community during the summer months, and the findings were that Laredo is hot. Although some of the telling portions of the data do illustrate that areas that are not as developed showed up cooler, areas where scrub brush and trees in parks, along creeks, and the Rio Grande Vega land all appear “cooler” on the map. KLB sees the need to continue to “cool” Laredo and provide relief in the form of shade.</p>
Collaboration	<p>KLB is a city funded program with part of mission being enhancing the community through beautification. In all projects, KLB has other city departments that support and partner with KLB. During the coordinating process all involved partners get together & host various meetings & site visits. Through site visits we are able to locate potential tree locations where they will be able to grow & have no interference with any surroundings that may harm their growth. All partners are assigned tasks, duties and expenses during the process and a map is also provided to any crew leader. The crew leader's goal is to ensure that every volunteer is planting the trees properly. In addition, our continued partnership with local businesses and organizations that assist us with events such as Coca-Cola Southwest Beverages, National Guard, Concentrix, and much more that support us through monetary contributions, in-kind, and volunteering that all have the same mission in mind.</p>

Budget

Amount of Funds Requested:

000

This is equal to the **Total Federal \$**.

This grant category requires a dollar for dollar match (1:1 Match). Your Total Local \$ needs to be greater than or equal to your Total Federal \$.

Add **Total Local Cash \$ + Total Local In-Kind \$** to calculate **Total Local \$**

	Federal \$	Local Cash \$	Local In-Kind \$	Total \$
Personnel				
Fringe				
Travel				
Supplies and Materials				
Equipment				
Contractual/Professional Services				
Other				
Totals				
	Total Local \$:			

Clearly describe how the amount in the category will be used. Maximum 1000 characters.

Personnel

Fringe

Travel

Supplies and Materials

Equipment

Contractual/Professional Services

Other

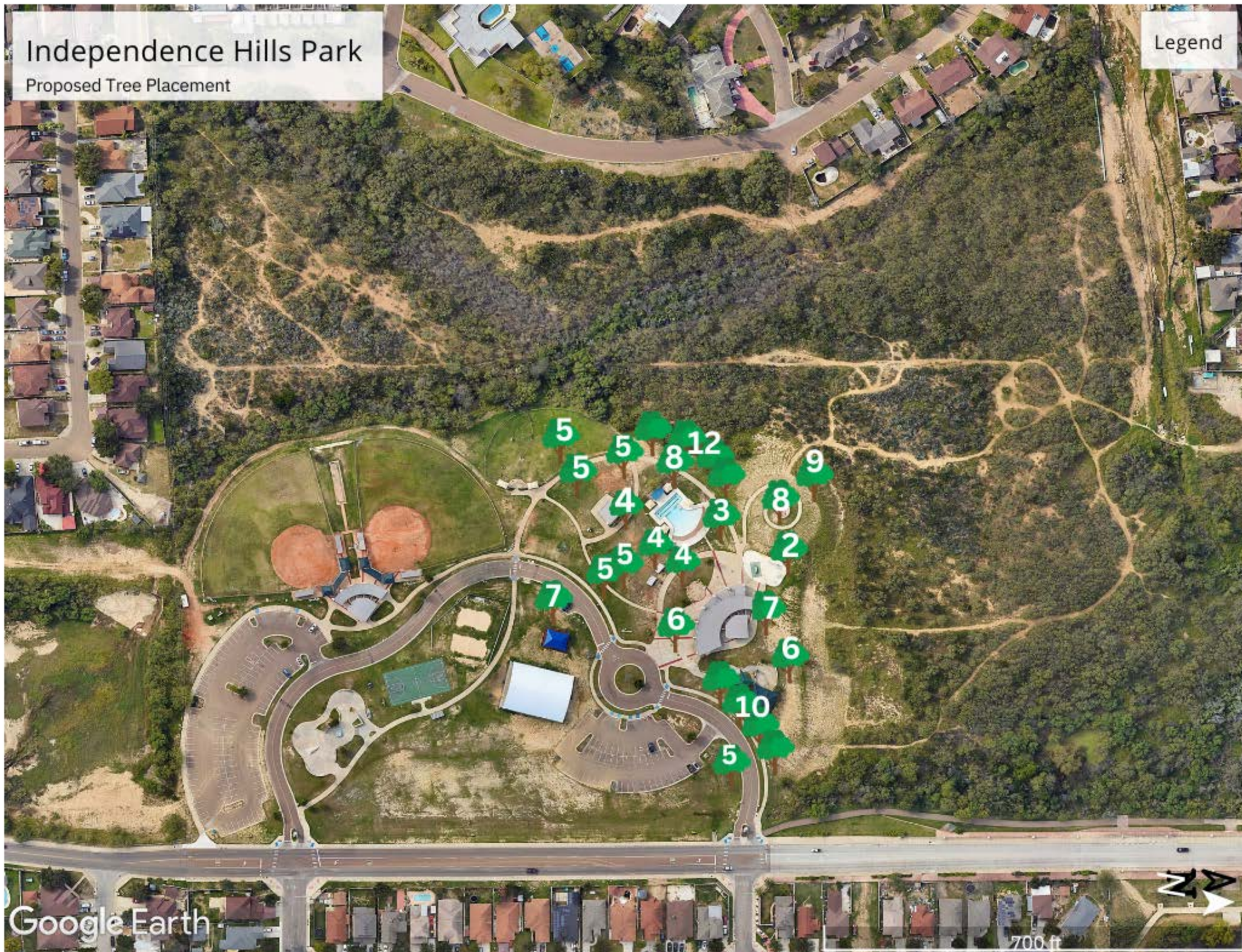
OTHER

Application Date	2024-02-16
Status	Pending
Attachments URL	https://texasforests-service.sharepoint.com/sites/Share-ForestSystems/Documents/Urban & Community Forestry/URBAN/GRANTS/Community Forestry Grants/Tree City USA/71

Independence Hills Park

Proposed Tree Placement

Legend



Google Earth

700 ft