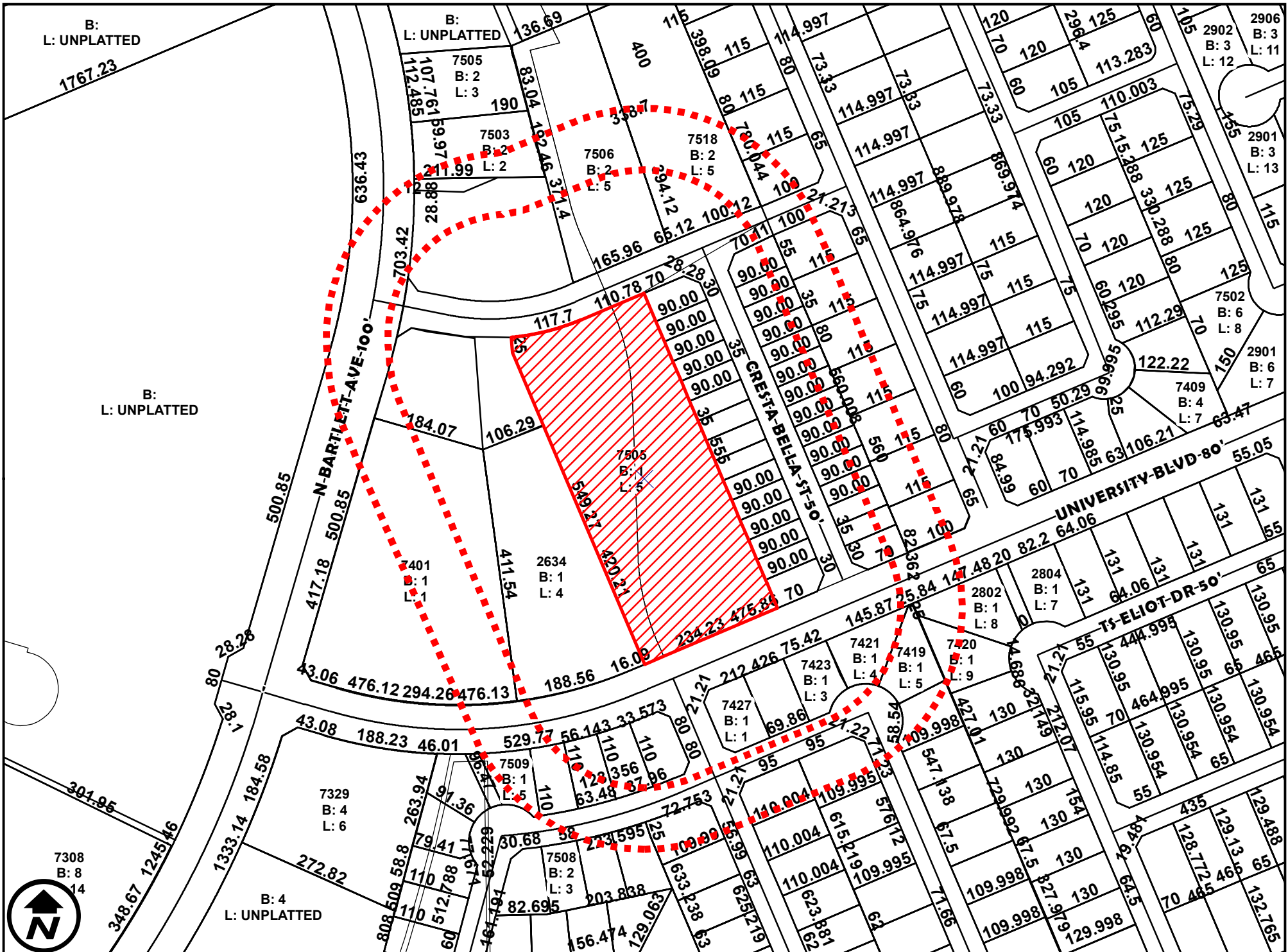


ZC-092-2024

COUNCIL DISTRICT 5

7505 RAYMOND CHANDLER DRIVE

B-3 (COMMUNITY BUSINESS DISTRICT) AND B-1 (LIMITED BUSINESS DISTRICT) TO R-1B (SINGLE FAMILY HIGH DENSITY DISTRICT)



DIMENSIONS MAP

ZC-092-2024

APPLICATION FOR

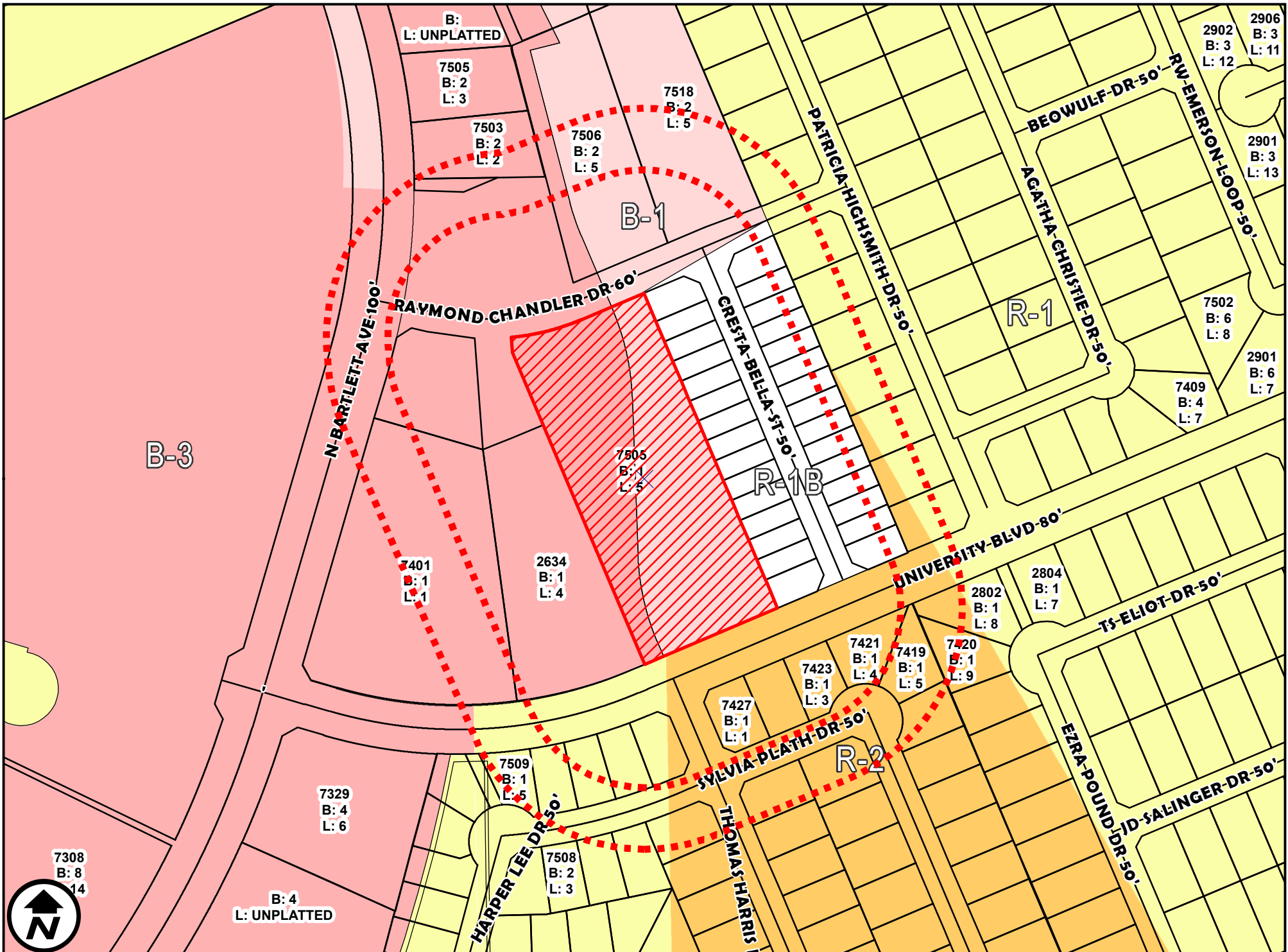
COUNCIL DISTRICT 5

B-3 (COMMUNITY BUSINESS DISTRICT) AND B-1 (LIMITED BUSINESS DISTRICT) TO

1 inch = 200 feet

7505 RAYMOND CHANDLER DRIVE

R-1B (SINGLE FAMILY HIGH DENSITY DISTRICT)



ZONING MAP

ZC-092-2024

APPLICATION FOR

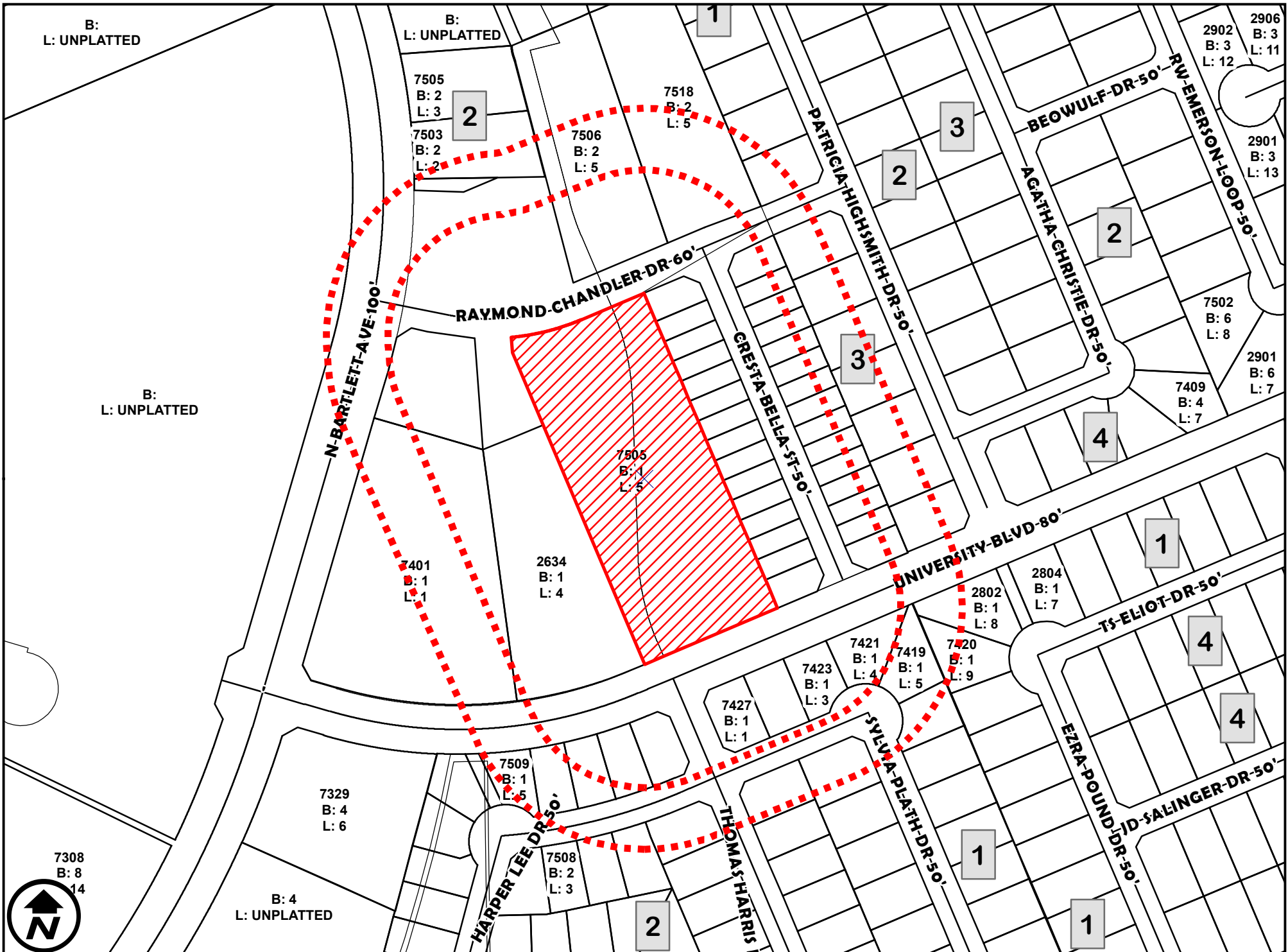
COUNCIL DISTRICT 5

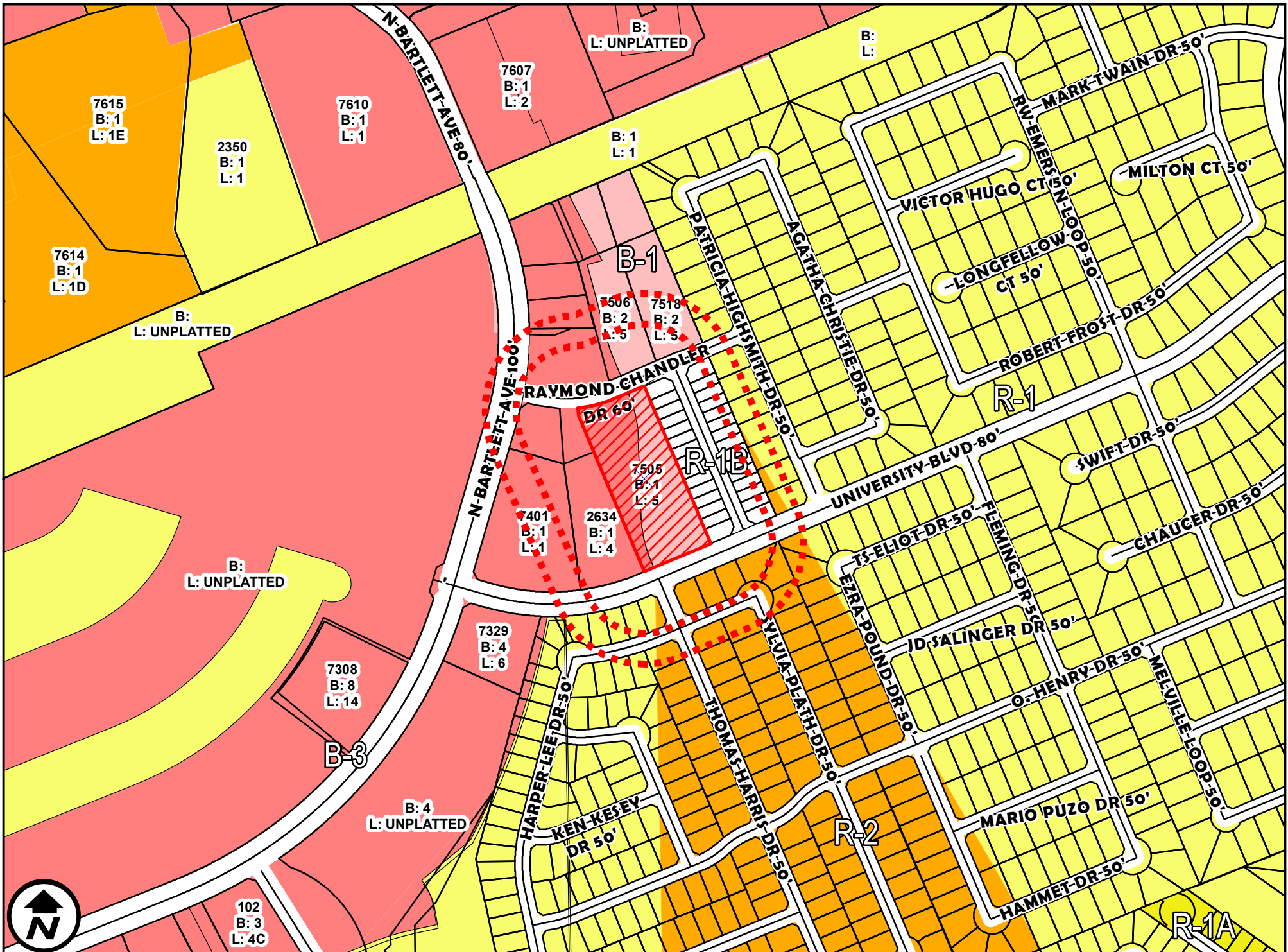
B-3 (COMMUNITY BUSINESS DISTRICT) AND B-1 (LIMITED BUSINESS DISTRICT) TO

1 inch = 200 feet

7505 RAYMOND CHANDLER DRIVE

R-1B (SINGLE FAMILY HIGH DENSITY DISTRICT)





ZONING OVERVIEW

ZC-092-2024

APPLICATION FOR

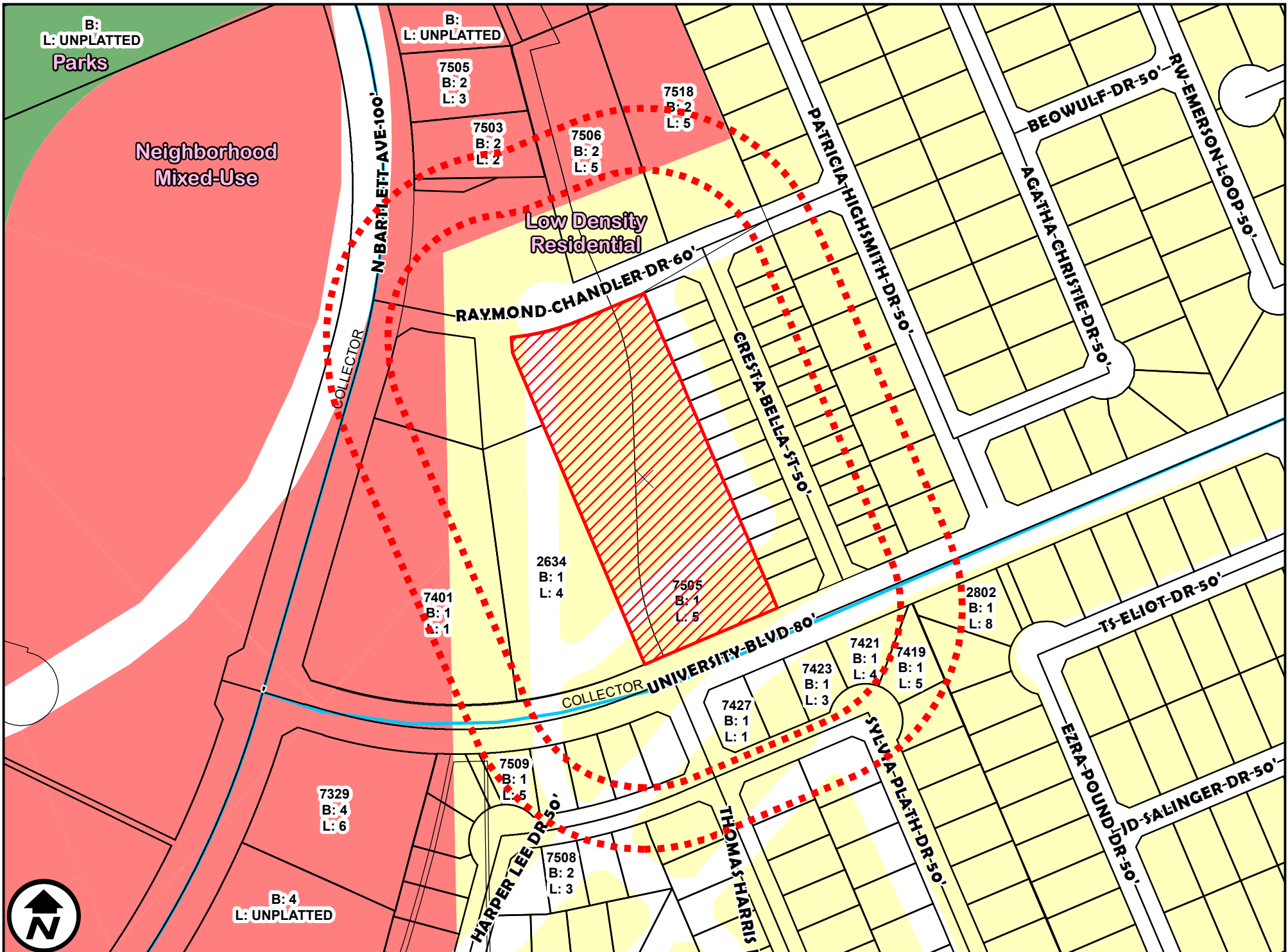
COUNCIL DISTRICT 5

B-3 (COMMUNITY BUSINESS DISTRICT) AND B-1 (LIMITED BUSINESS DISTRICT) TO

1 inch = 400 feet

7505 RAYMOND CHANDLER DRIVE

R-1B (SINGLE FAMILY HIGH DENSITY DISTRICT)



FUTURE LANDUSE

ZC-092-2024

COUNCIL DISTRICT 5

7505 RAYMOND CHANDLER DRIVE

1 inch = 200 feet

B-3 (COMMUNITY BUSINESS DISTRICT) AND B-1 (LIMITED BUSINESS DISTRICT) TO R-1B (SINGLE FAMILY HIGH DENSITY DISTRICT)

APPLICATION FOR

