



AERIAL MAP

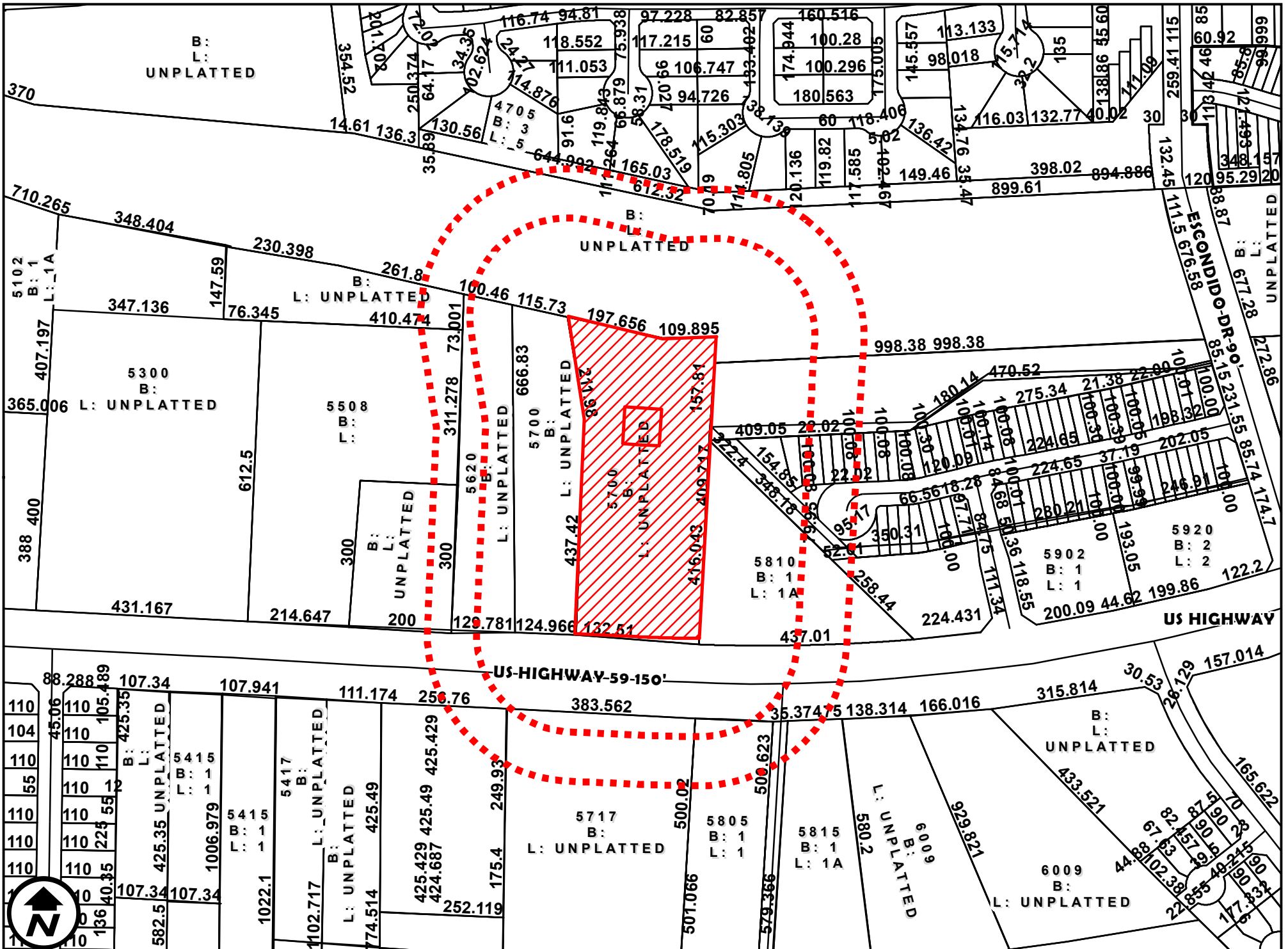
1 inch = 250 feet

ZC-067-2024

COUNCIL DISTRICT 5

NORTH OF US HIGHWAY 59 AND WEST OF ESCONDIDO DRIVE

APPLICATION FOR  
B-3 (COMMUNITY BUSINESS DISTRICT) TO  
S.U.P FOR COMMUNICATION TOWER



DIMENSIONS MAP

ZC-067-2024

APPLICATION FOR

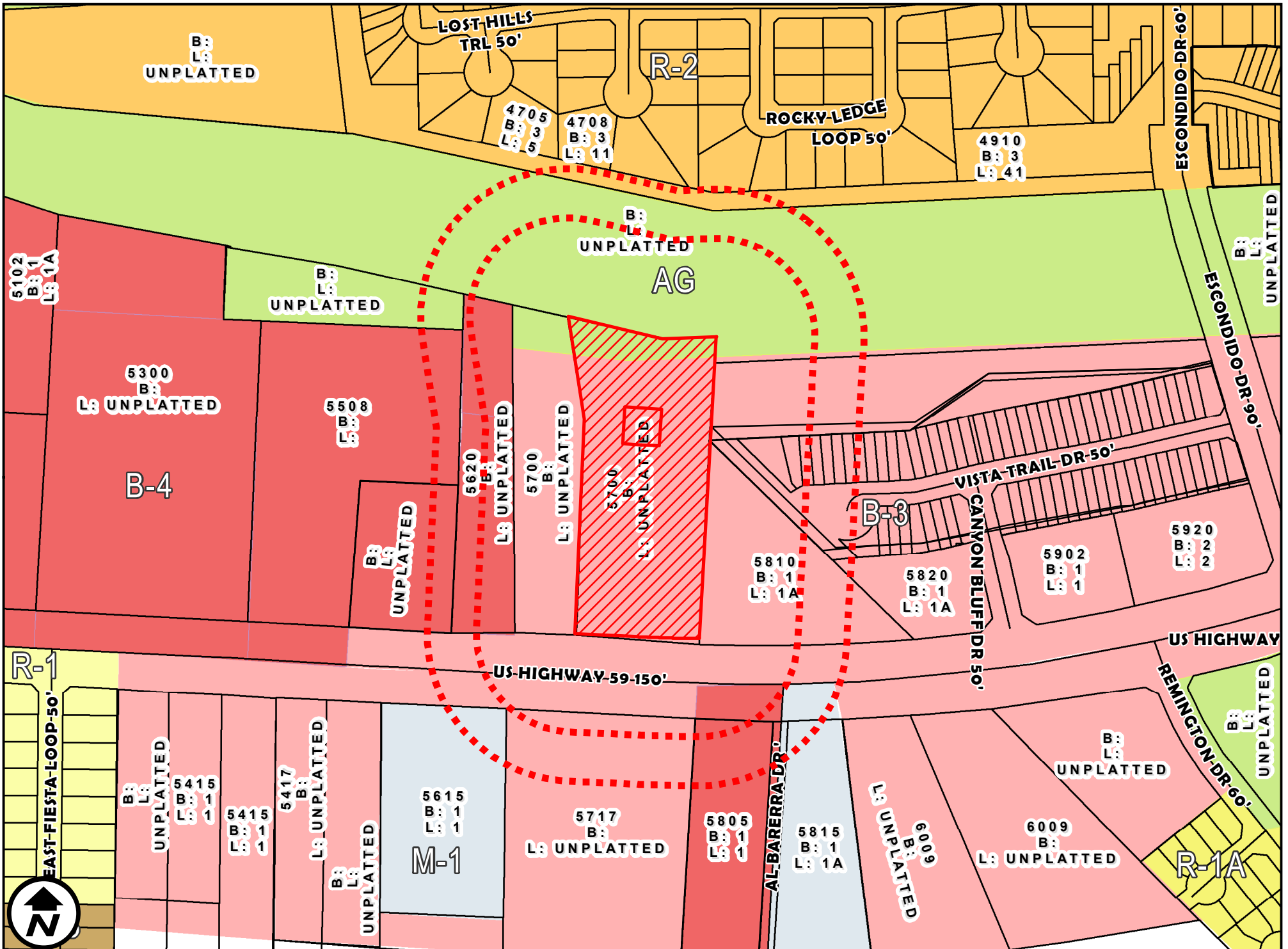
COUNCIL DISTRICT 5

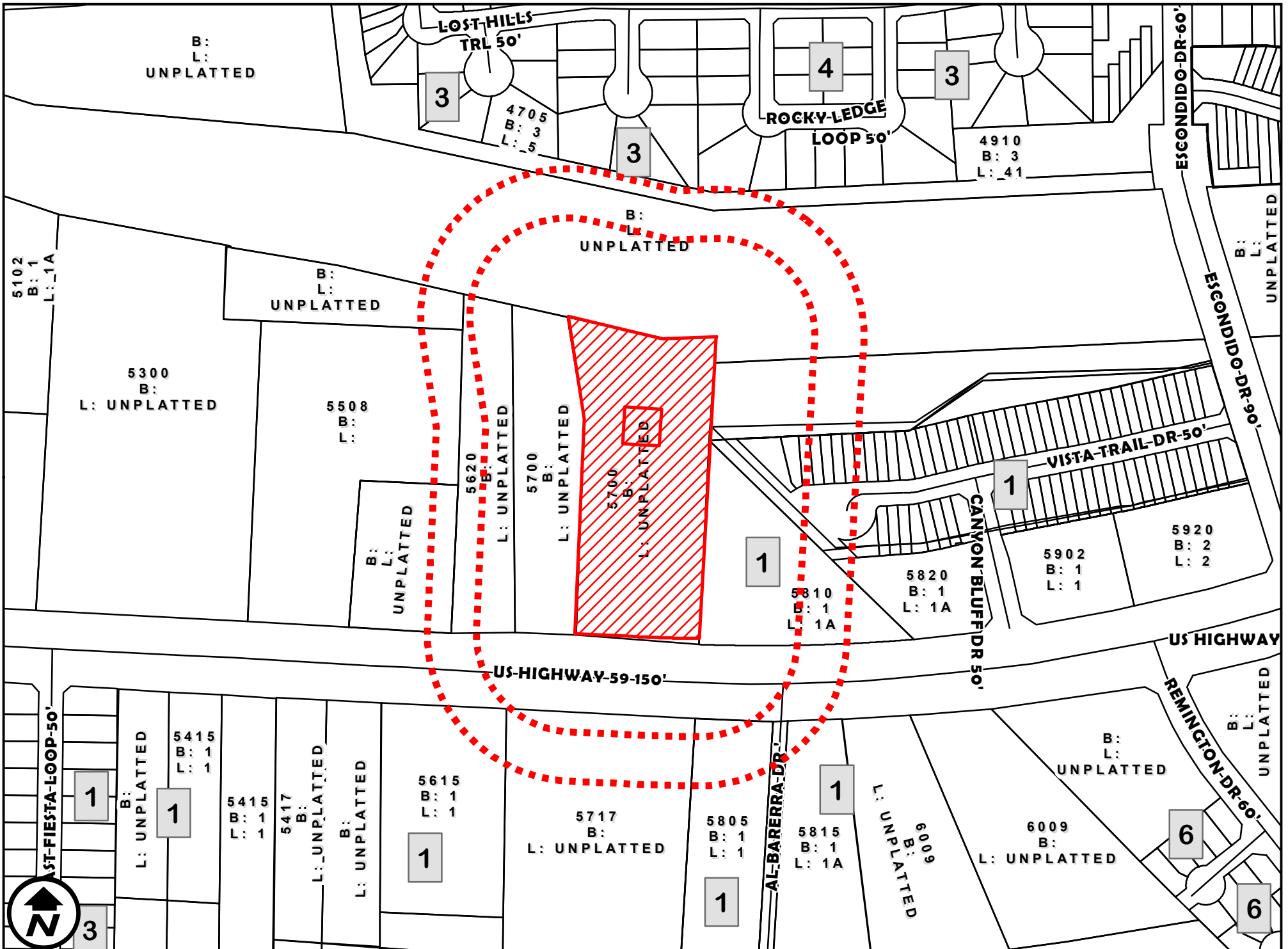
B-3 (COMMUNITY BUSINESS DISTRICT) TO

1 inch = 250 feet

NORTH OF US HIGHWAY 59 AND WEST OF ESCONDIDO DRIVE

S.U.P FOR COMMUNICATION TOWER





SURVEY MAP

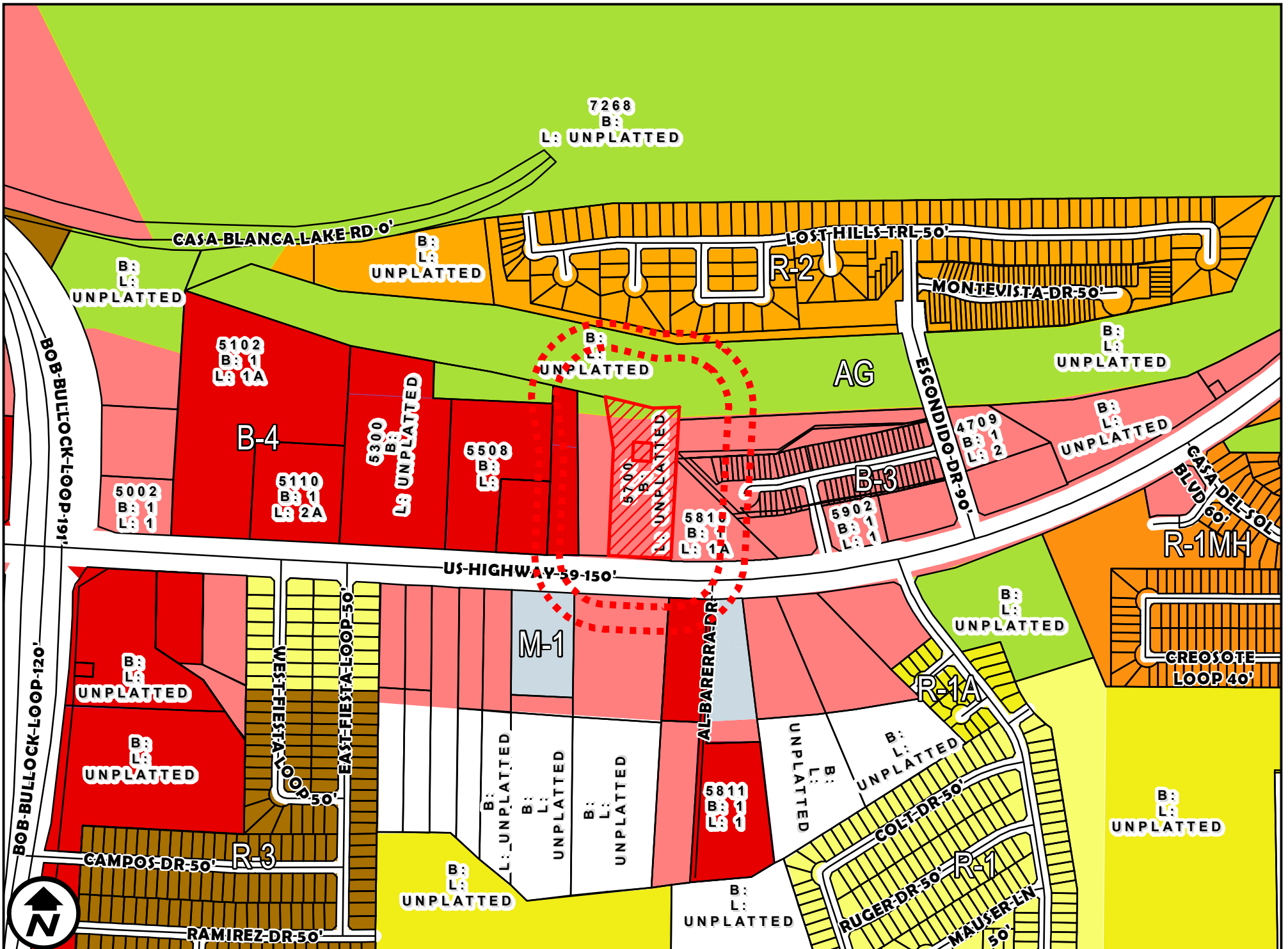
1 inch = 250 feet

ZC-067-2024

COUNCIL DISTRICT 5

NORTH OF US HIGHWAY 59 AND WEST OF ESCONDIDO DRIVE

APPLICATION FOR  
B-3 (COMMUNITY BUSINESS DISTRICT) TO  
S.U.P FOR COMMUNICATION TOWER



ZONING OVERVIEW

ZC-067-2024

APPLICATION FOR

1 inch = 500 feet

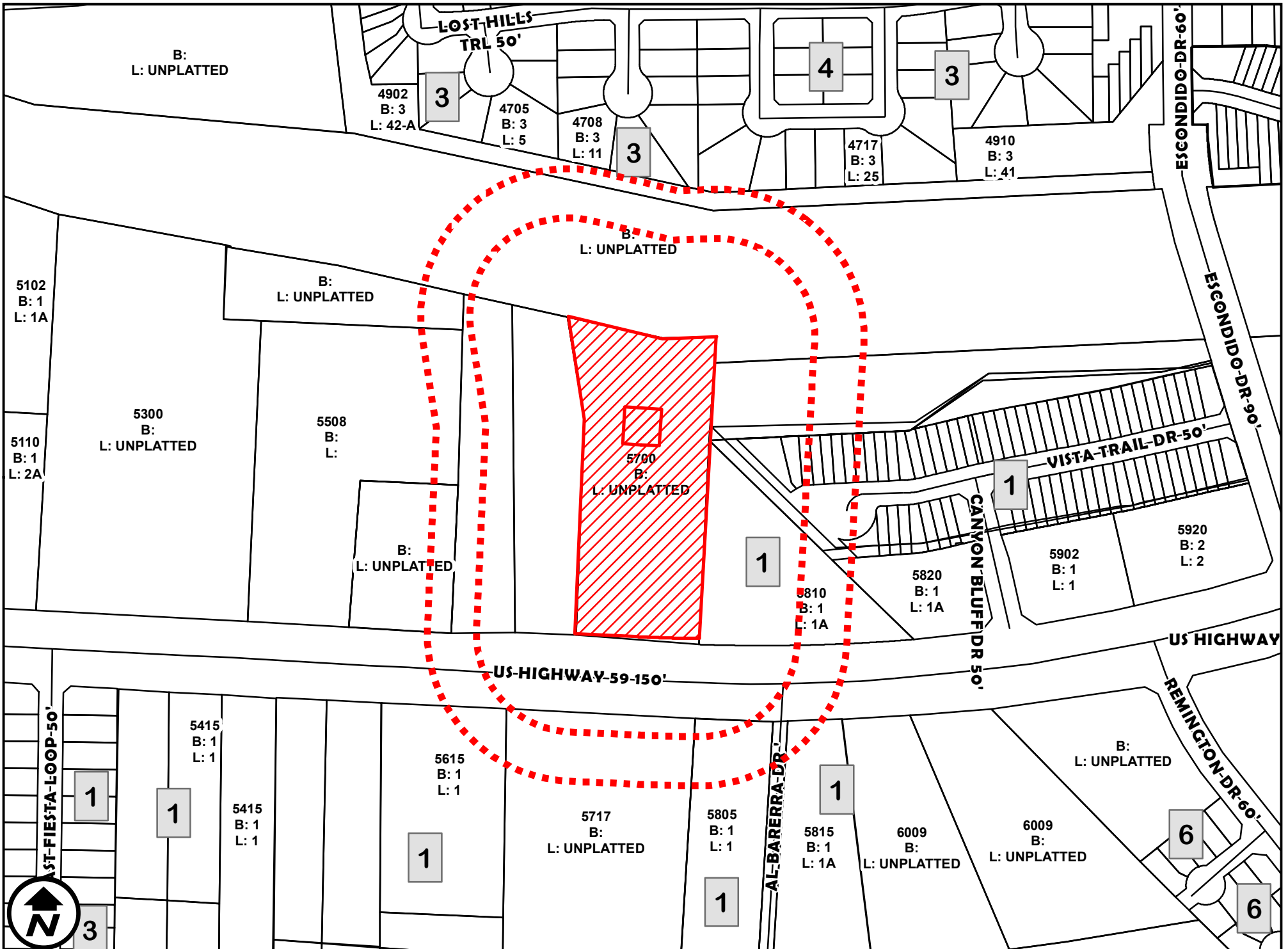
COUNCIL DISTRICT 5

B-3 (COMMUNITY BUSINESS DISTRICT) TO

NORTH OF US HIGHWAY 59 AND WEST OF ESCONDIDO DRIVE

S.U.P FOR COMMUNICATION TOWER





200' AND 300' NOTIFICATION

ZC-067-2024

APPLICATION FOR

1 inch = 250 feet

COUNCIL DISTRICT 5  
NORTH OF US HIGHWAY 59 AND WEST OF ESCONDIDO DRIVE

B-3 (COMMUNITY BUSINESS DISTRICT) TO  
S.U.P FOR COMMUNICATION TOWER